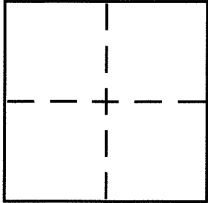


**CORNER RECORD**Document Number CR 7480  
City of BERKELEY County of ALAMEDA, CaliforniaBrief Legal Description LOT 6 & 7, BLK. B, BERRY-BANGS NO. 3 (19M78)**CORNER TYPE**

Government Corner ☐ Control ☐  
 Meander ☐ Property ☒  
 Rancho ☐ Other ☐  
 Date of Survey JULY 7, 2015

**COORDINATES (Optional)**

N. \_\_\_\_\_  
 E. \_\_\_\_\_  
 Zone \_\_\_\_\_ NAD27 ☐ NAD83 ☐  
 NAD83 Epoch \_\_\_\_\_  
 Elev. \_\_\_\_\_  
 Vert. Datum: NGVD29 ☐ NAVD88 ☐  
 Meas. Units: Metric ☐ Imperial ☐

Corner – Left as found ☐ Found and tagged ☐ Established ☒ Reestablished ☐ Rebuilt ☐

Identification and type of corner found: Evidence used to identify or procedure used to establish or reestablish the corner:

SEE OTHER SIDE

A description of the physical condition of the monument as found and as set or reset:

SEE OTHER SIDE

**SURVEYOR'S STATEMENT**

This Corner Record was prepared by me or under my direction in conformance with

the Land Surveyor's Act on AUGUST 10, 2015

Signed Robert J. Brunel P.L.S or R.C.E. No. 4961

**COUNTY SURVEYOR'S STATEMENT**

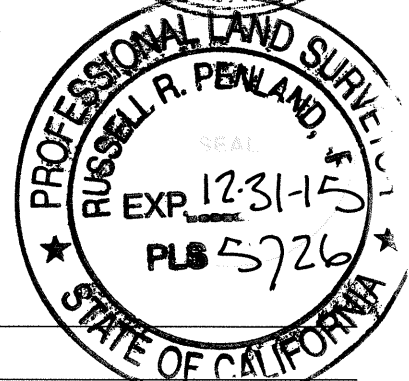
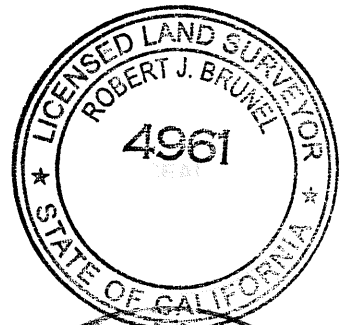
This Corner Record was received 8-13-15

and examined and filed 8-25-15

Signed Russell R. Penland P.L.S or R.C.E. No. 5726

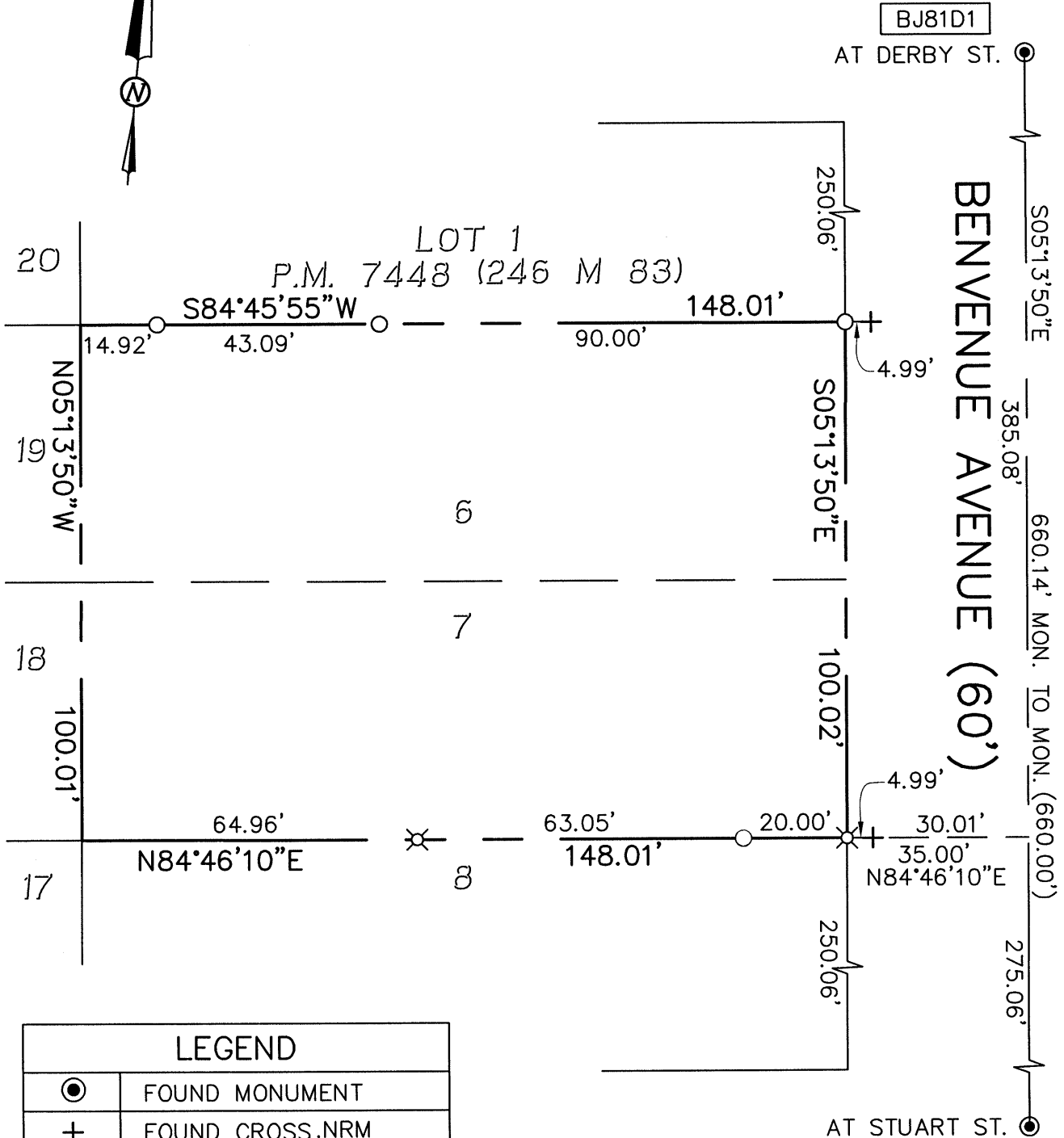
Title County Surveyor

County Surveyor's Comment \_\_\_\_\_



# CORNER RECORD

LOTS 6 AND 7, BLOCK B  
BERRY-BANGS TRACT, MAP NO. 3 (19 M 78)  
CITY OF BERKELEY, ALAMEDA COUNTY, CALIFORNIA  
ASSESSOR'S PARCEL 054-1710-009  
JULY 7, 2015 SCALE: 1" = 30'



**MORAN ENGINEERING, INC.**

BERKELEY, CALIFORNIA

BENVENUE-BND.DWG

F.B. 1552

JOB NO. 15-9181