

BK 42 Pg 90

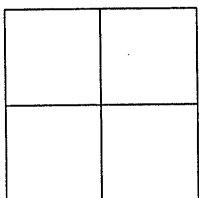
CORNER RECORD

Document Number CR 4715

City of OAKLAND

County of ALAMEDA, California

Brief Legal Description IRON PIN MONUMENT LOCATED WITHIN SUNNYMERE AVENUE.



CORNER RECORD

Government Corner ☐ Control ☒
Meander ☐ Property ☐
Rancho ☐ Other ☐
Date of Survey 10/17/11

COORDINATES
(Optional)

N. _____
E. _____
Zone _____ Datum _____
Elev. _____

Corner — Left as found ☒ Found and tagged ☐ Established ☐ Reestablished ☐ Rebuilt ☐

Identification and type of corner found: Evidence used to identify or procedure used to establish or reestablish the corner:
FOUND IRON PIN MONUMENT LOCATED WITHIN SUNNYMERE AVENUE.

AS SHOWN ON CITY OF OAKLAND MONUMENT MAP, PAGE 138.

NO CITY MONUMENT DESIGNATION NUMBER AT SUBJECT LOCATION.

THIS POINT WAS REFERENCED PRIOR TO A CONSTRUCTION PROJECT IN THE VICINITY.

A description of the physical condition of the monument as found and as set or reset: _____

FOUND AND SET POINTS AS SHOWN ON PAGE 2.

THESE TIES ARE FOR THE PURPOSE OF PERPETUATING THE FOUND MONUMENTATION.

NO CLAIM IS MADE AS TO THE RELATIONSHIP OF THE POINTS OR LINES SHOWN HEREON
TO TRUE BOUNDARY LOCATIONS.

SURVEYOR'S STATEMENT

This Corner Record was prepared by me or under my direction in conformance with
the Land Surveyors' Act on OCTOBER 21, 2011.

Signed Vincent H. Cunha L.S. Number LS 4520
VINCENT H. CUNHA

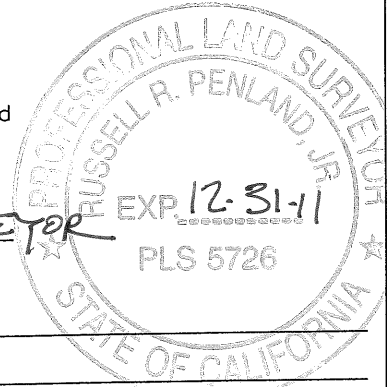


COUNTY SURVEYOR'S STATEMENT

This Corner Record was received 10-26 2011 and examined

and filed 12-29 2011.

Signed Russell R. Penland, Jr. Title COUNTY SURVEYOR



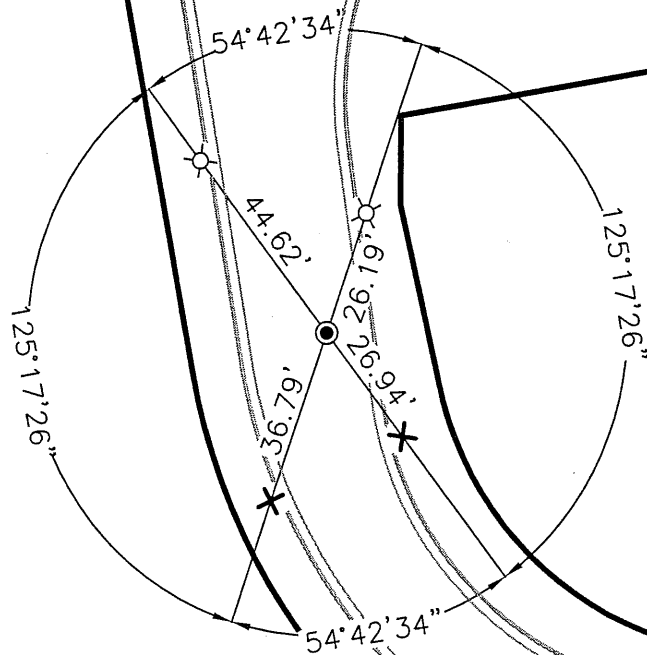
County Surveyor's Comment _____

MAG3K1

SEMINARY AVENUE

I-580 FREEWAY

SUNNYMERE
AVENUE



SCALE : 1"=40'

LEGEND

- FOUND IRON PIN IN MONUMENT WELL
- ◎ FOUND MONUMENT AS NOTED
- X FOUND CUT X IN CONCRETE
- ⌘ SET NAIL AND TAG LS 4520

© (SEE CR4716)

210078 \ SUNNYMERE \ CR-1