

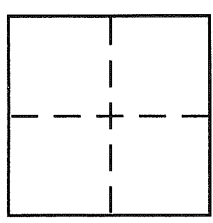
CORNER RECORD

City of Berkeley

Document Number CR 1840

County of Alameda, California

Brief Legal Description The Alameda



CORNER TYPE

Government Corner ☐ Control ☐
Meander ☐ Property ☐
Rancho ☐ Other ☒
Date of Survey 11/21/02

COORDINATES (Optional)

N. _____
E. _____
Zone _____ NAD27 ☐ NAD83 ☐
NAD83 Epoch _____
Elev. _____
Vert. Datum: NGVD29 ☐ NAVD88 ☐
Meas. Units: Metric ☐ Imperial ☐

Corner - Left as found ☐ Found and tagged ☐ Established ☐ Reestablished ☐ Rebuilt ☒

Identification and type of corner found: Evidence used to identify or procedure used to establish or reestablish the corner:
Standard City of Berkeley street monument on The Alameda approximately 100' southeast
of the intersection of The Alameda and Yosemite Drive.
The monument was referenced using local ties. See reverse.

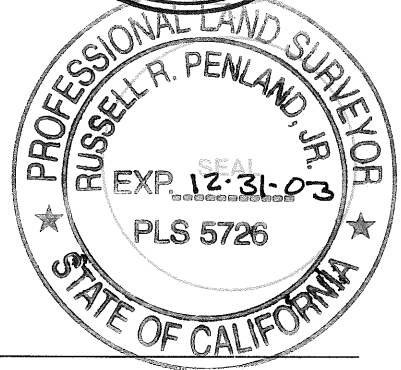
A description of the physical condition of the monument as found and as set or reset: _____
Monument well with 2" City of Berkeley brass disc was set.

SURVEYOR'S STATEMENT

This Corner Record was prepared by me or under my direction in conformance with
the Land Surveyor's Act on November 22, 2002
Signed [Signature] P.L.S or R.C.E. No. L.S. 6884

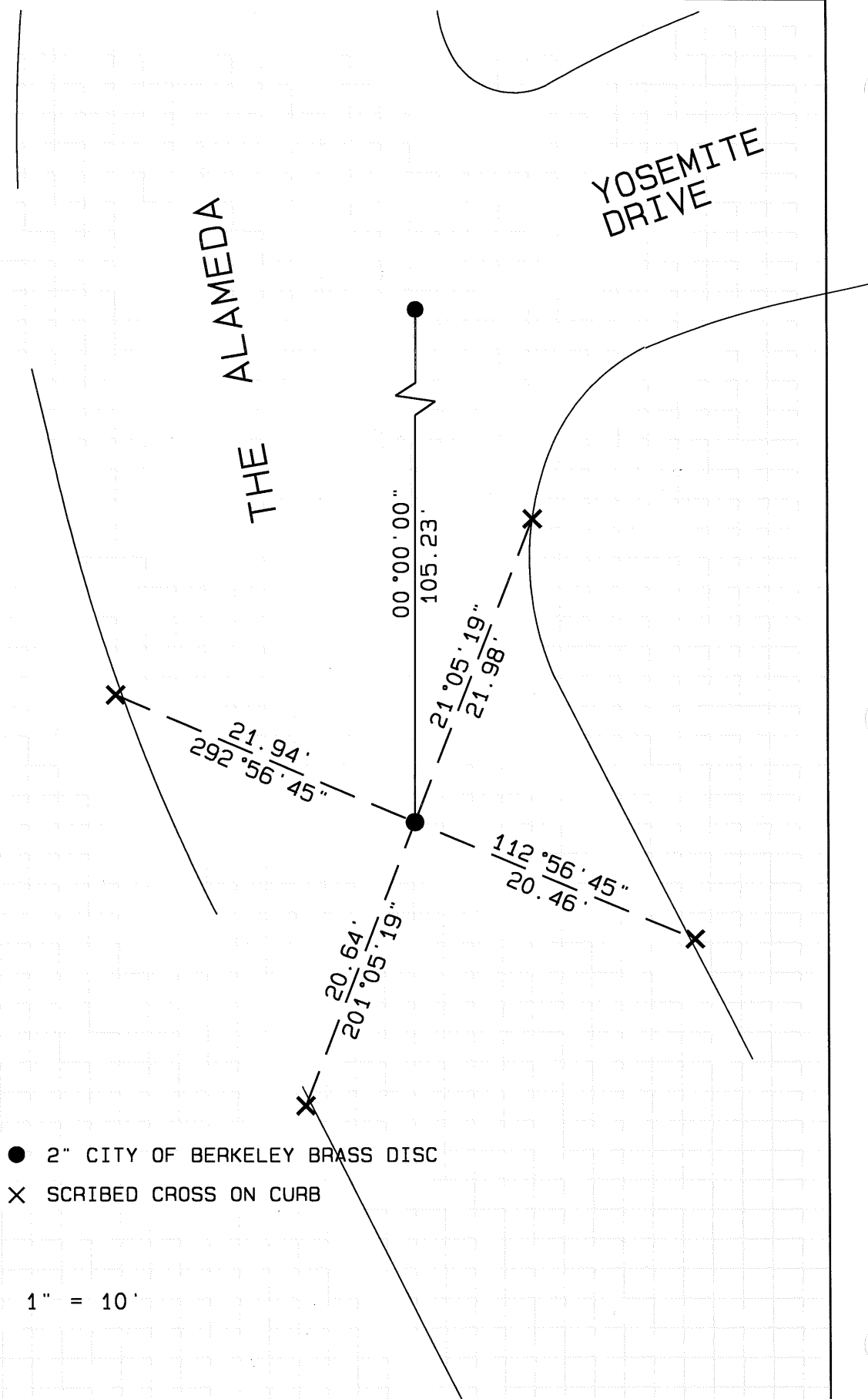
COUNTY SURVEYOR'S STATEMENT

This Corner Record was received 01-03-03
and examined and filed 9-17-03
Signed [Signature] P.L.S or R.C.E. No. 5726
Title COUNTY SURVEYOR
County Surveyor's Comment _____



THE ALAMEDA

YOSEMITE DRIVE



● 2" CITY OF BERKELEY BRASS DISC

X SCRIBED CROSS ON CURB

SCALE: 1" = 10'