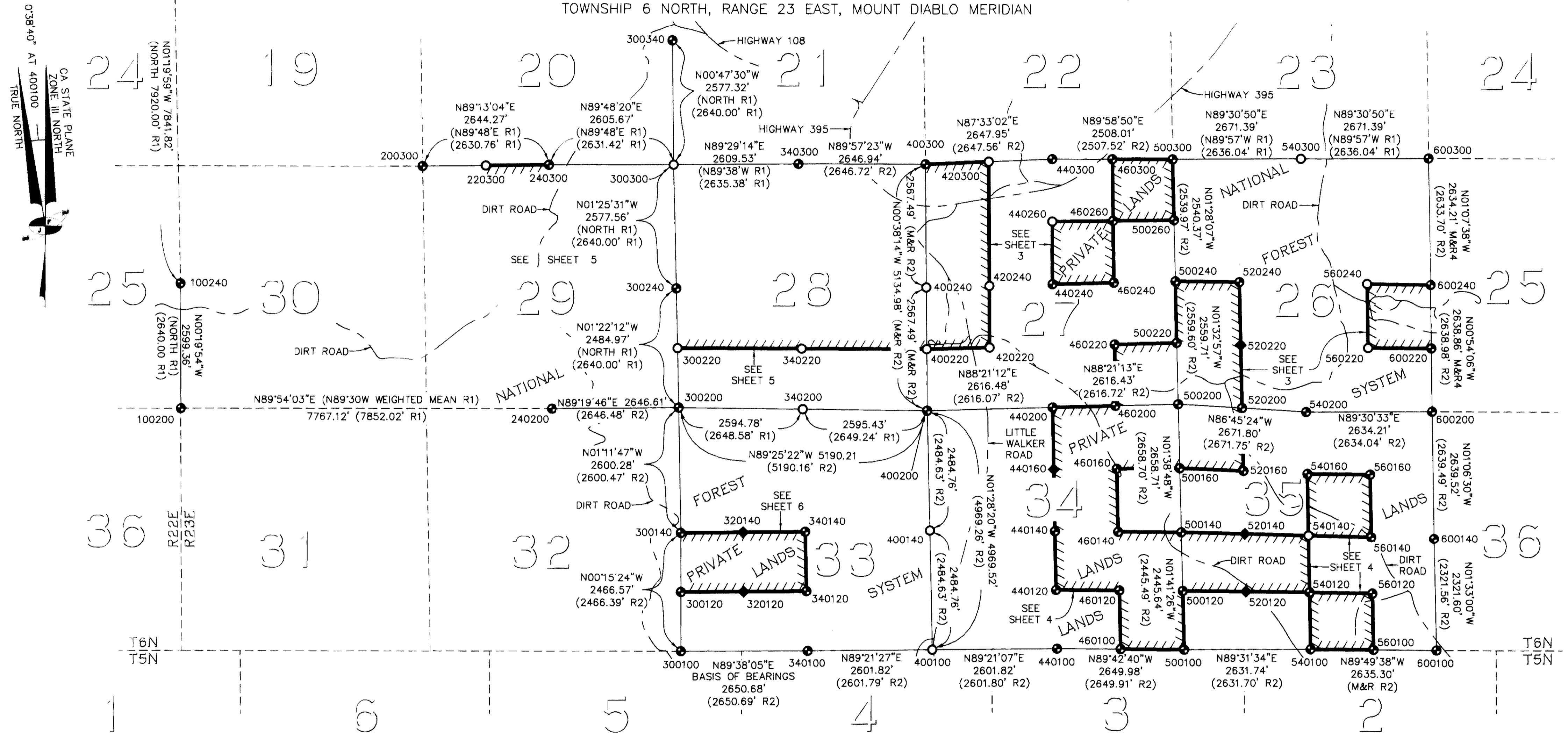


# RECORD OF SURVEY No. 32-86

IN THE UNINCORPORATED TERRITORY OF THE COUNTY OF MONO, STATE OF CALIFORNIA,  
BEING ALL, OR PORTIONS OF, SECTIONS 26 THROUGH 30 AND SECTIONS 33 THROUGH 35,  
TOWNSHIP 6 NORTH, RANGE 23 EAST, MOUNT DIABLO MERIDIAN



## LEGEND:

- FOUND NOTHING, SET USFS ALUMINUM MONUMENT: A 3/4" DIAMETER CAP ON A 2 1/2" DIAMETER POST, 30 INCHES LONG, UNLESS OTHERWISE NOTED
- FOUND CORNER AS DESCRIBED, REPLACED WITH USFS ALUMINUM MONUMENT: A 3/4" DIAMETER CAP ON A 2 1/2" DIAMETER POST, 30 INCHES LONG, UNLESS OTHERWISE NOTED
- FOUND BLM OR FOREST SERVICE MOUNUMENT AS NOTED
- ◆ FOUND MONUMENT AS NOTED
- ////// TOIYABE NATIONAL FOREST BOUNDARY POSTED AND MARKED THIS SURVEY
- ESTABLISHED SECTIONAL LINES
- - - - - UNSURVEYED LINE, OR BEARING AND DISTANCE TIE ONLY
- - - - - ROADS OR PATHS AS NOTED

- 700500 INDICATES CORNER NUMBER, SEE PAGES 6 THROUGH 8 FOR DESCRIPTIONS
- RCE REGISTERED CIVIL ENGINEER
- M&R MEASURED AND RECORD
- R1 ORIGINAL SURVEY PLAT AND NOTES, T6N, R23E, MDM, APPROVED BY THE U.S. SURVEYOR GENERALS OFFICE ON MARCH 12, 1877
- R2 RECORD OF SURVEY NO. 32-23, RECORD OF SURVEY MAPS BOOK 1, PAGE 98, FILED JUNE 12, 1984, AS INSTRUMENT NO. 8933
- R3 PARCEL MAP NO. 32-55, PARCEL MAP BOOK 4, PAGE 122, FILED SEPTEMBER 22, 2000, AS INSTRUMENT NO. 2000005538
- R4 RECORD OF SURVEY NO. 32-85, RECORD OF SURVEY MAPS BOOK 5, PAGE 8, FILED OCTOBER 12, 2011, AS INSTRUMENT NO. 2011005440

## GRAPHIC SCALE



( IN FEET )  
1 inch = 1400 ft.