

CORNER RECORD

Agency Index

BK 141 PG 61

Document Number

CR 14894

City of OAKLAND

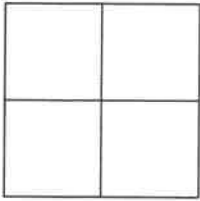
County of

ALAMEDA

, California

Brief Legal Description

WELL MONUMENT LOCATED WITHIN 13th AVE AT E. 22nd STREET



CORNER TYPE

COORDINATES (Optional)

Government Corner ☐ Control ☒
Meander ☐ Property ☐
Rancho ☐ Other ☐

N. _____ E. _____

Elevation _____

Units Metric ☐ U.S. Survey Foot ☐

Horizontal Datum _____

Zone _____ Epoch Date _____

Vertical Datum _____

☐ Complies with Public Resources Code §§8801-8819☐ Complies with Public Resources Code §§8890-8902PLS Act Ref: ☐ 8765 (d) ☒ 8771 ☐ 8773 ☐ Other: _____

Corner/
Monument: ☒ Left as found ☐ Established ☐ Rebuilt ☒ Pre-Construction
☐ Found and tagged ☐ Reestablished ☒ Referenced ☐ Post-Construction

Narrative of corner identified and monument as found, set, reset, replaced, or removed:

☐ See sheet #2 for description (s):

FOUND 1/4" BRASS PIN IN CONCRETE IN MONUMENT WELL.

FOUND AND SET POINTS AS SHOWN ON PAGE 2.

THIS POINT WAS REFERENCED PRIOR TO A CONSTRUCTION PROJECT IN THE VICINITY.

THE TIES SHOWN HEREON ARE FOR THE PURPOSE OF PERPETUATING FOUND MONUMENTATION.
NO CLAIM IS MADE AS TO THE RELATIONSHIP OF THE POINTS OR LINES SHOWN HEREON TO TRUE
BOUNDARY LOCATION.

SURVEYOR'S STATEMENT

This Corner Record was prepared by me or under my direction in conformance with

the Professional Land Surveyors' Act on OCTOBER 1, 2021.

Signed John T. May P.L.S. or ~~P.C.E.~~ No. 8570

JOHN T. MAY



COUNTY SURVEYOR'S STATEMENT

This Corner Record was received _____,

and examined and filed OCT 26 2021.

Signed D. Ian Wilson P.L.S. or ~~P.C.E.~~ No. 7010

Title COUNTY SURVEYOR

County Surveyor's Comment

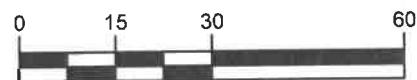


SCALE: 1"=30'

LEGEND

- FOUND PIN IN CONCRETE IN MONUMENT WELL
- ⊗ SET NAIL AND TAG MARKED "TOWILL RP" IN WALK
- APN ASSESSOR'S PARCEL NUMBER

19592 REFERENCE STREET ADDRESS



GRAPHIC SCALE: 1 INCH = 30 FT

ALL MEASUREMENTS ARE IN U.S. SURVEY FOOT AND DECIMAL THEREOF

