

# CORNER RECORD

Agency Index

Document Number

BK 148 PG 19

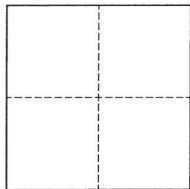
City of OaklandCounty of Alameda

, California

Brief Legal Description Intersection of 100th Avenue and D Street

## CORNER TYPE

## COORDINATES (Optional)



- ☐ Government Corner ☒ Control  
☐ Meander ☐ Property  
☐ Rancho ☐ Other

Date of Survey 2022-05-17

N. \_\_\_\_\_ E. \_\_\_\_\_

Elevation \_\_\_\_\_

Units ☐ Metric ☐ U.S. Survey Foot

Horizontal Datum \_\_\_\_\_

Zone \_\_\_\_\_ Epoch Date \_\_\_\_\_

Vertical Datum \_\_\_\_\_

☐ Complies with Public Resources Code §§8801-8819☐ Complies with Public Resources Code §§8890-8902

PLS Act Ref.:

☐ 8765(d)☒ 8771☐ 8773☐ Other:

Corner/

☒ Left as found☐ Established☐ Rebuilt☒ Pre-Construction

Monument:

☐ Found and tagged☐ Reestablished☒ Referenced☐ Post-Construction

Narrative of corner identified and monument as found, set, reset, replaced, or removed:

☐ See sheet #2 for description(s):

## SURVEYOR'S STATEMENT

This Corner Record was prepared by me or under my direction in conformance with

the Professional Land Surveyors' Act on June 27, 2022

Signed

P.L.S. or R.C.E. No.

8040

## COUNTY SURVEYOR'S STATEMENT

This Corner Record was received

and examined and filed

JUN 30 2022

Signed

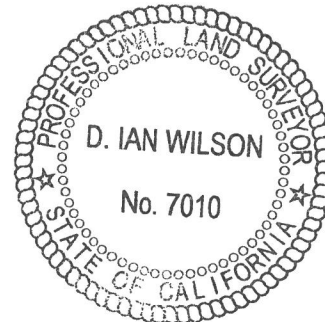
P.L.S. or R.C.E. No.

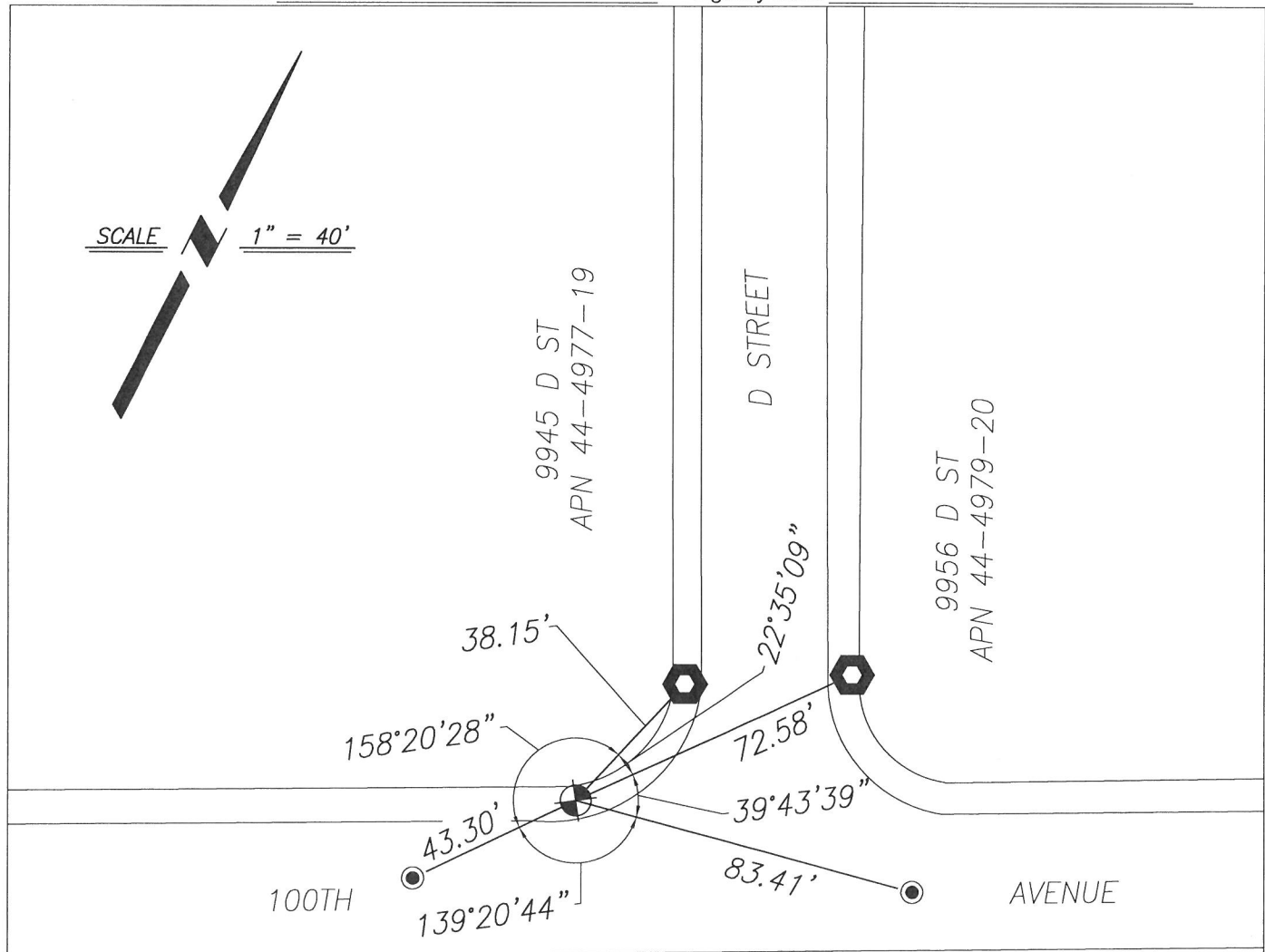
7010

Title

ALAMEDA COUNTY SURVEYOR

County Surveyor's Comment





1096 100TH AVE  
APN 45-5182-22

## REFERENCE

1. CITY OF OAKLAND MONUMENT PER MONUMENT INDEX SHEET 42

LEGEND

-  FOUND MONUMENT IN WELL, CONCRETE  
MONUMENT WITH NAIL

- 
- SET CUT CROSS ON CONCRETE AS
- 
- REFERENCE POINT

- SET NAIL IN PAVEMENT AS REFERENCE  
POINT, WITHOUT TAG

## NOTES

1. ALL REFERENCES ARE  
ALAMEDA COUNTY RECORDS