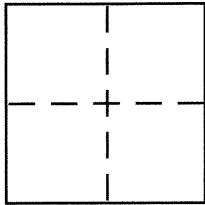


CORNER RECORDDocument Number CR9180City of OAKLANDCounty of ALAMEDA, CaliforniaBrief Legal Description LOT 8, BLOCK 12, OAKMORE HIGHLANDS (10M88)**CORNER TYPE**

Government Corner ☐ Control ☐
 Meander ☐ Property ☒
 Rancho ☐ Other ☐
 Date of Survey OCT. 4, 2016

COORDINATES (Optional)

N. _____
 E. _____
 Zone _____ NAD27 ☐ NAD83 ☐
 NAD83 Epoch _____
 Elev. _____
 Vert. Datum: NGVD29 ☐ NAVD88 ☐
 Meas. Units: Metric ☐ Imperial ☐

Corner - Left as found ☐ Found and tagged ☐ Established ☒ Reestablished ☐ Rebuilt ☐

Identification and type of corner found: Evidence used to identify or procedure used to establish or reestablish the corner:

SEE OTHER SIDE

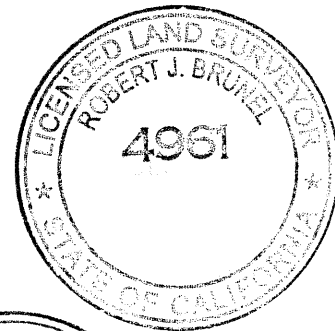
A description of the physical condition of the monument as found and as set or reset:

SEE OTHER SIDE

SURVEYOR'S STATEMENT

This Corner Record was prepared by me or under my direction in conformance with the Land Surveyor's Act on OCTOBER 25, 2016

Signed Robert J. Brunel P.L.S or R.E. No. 4961

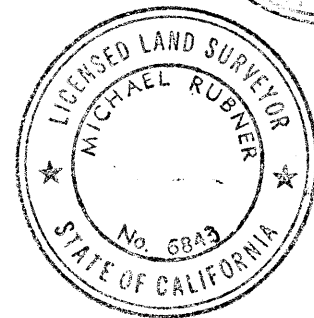
**COUNTY SURVEYOR'S STATEMENT**

This Corner Record was received 25 OCTOBER, 2016

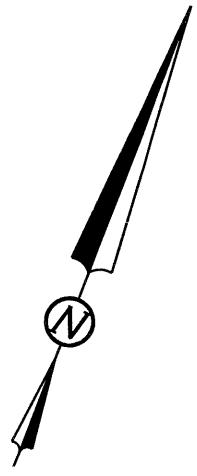
and examined and filed 17 JANUARY, 2017

Signed Michael Rubner P.L.S or R.E. No. 6843

Title COUNTY SURVEYOR



County Surveyor's Comment _____

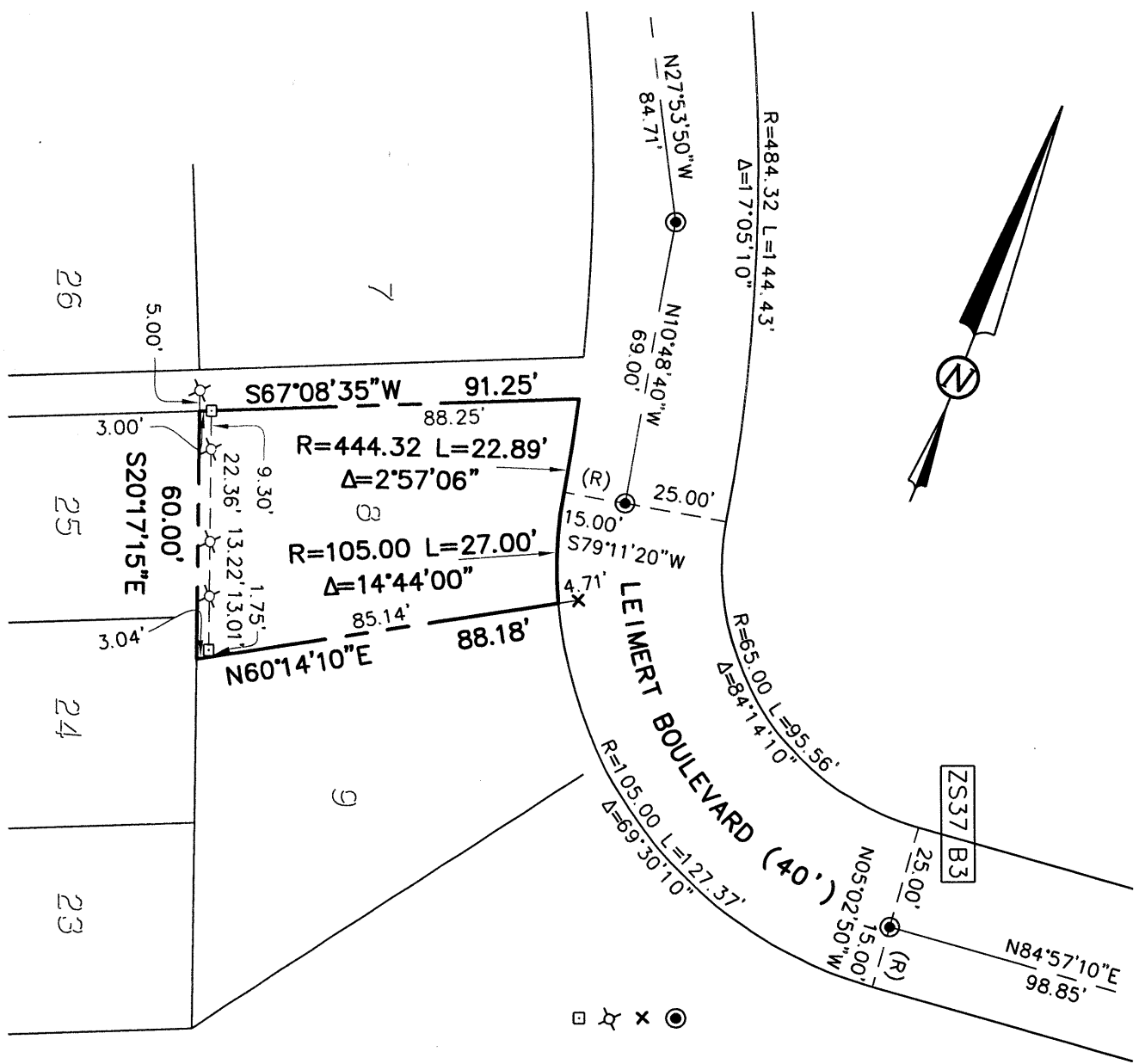


CORNER RECORD

LOT 8, BLOCK 12
OAKMORE HIGHLANDS (10 M 88)
OAKLAND, ALAMEDA COUNTY, CALIFORNIA

OCTOBER 4, 2016 SCALE: 1" = 40'

- LEGEND**
- FOUND CONCRETE MONUMENT PER (10 M 88)
 - × FOUND CROSS, NRM
 - SET CROSS WITH BRASS TAG, LS 4961
 - SET 2" HUB WITH BRASS TAG, LS 4961



MORAN ENGINEERING, INC.

BERKELEY, CALIFORNIA
LEIMERT CR.DWG JOB NO. 16-9505