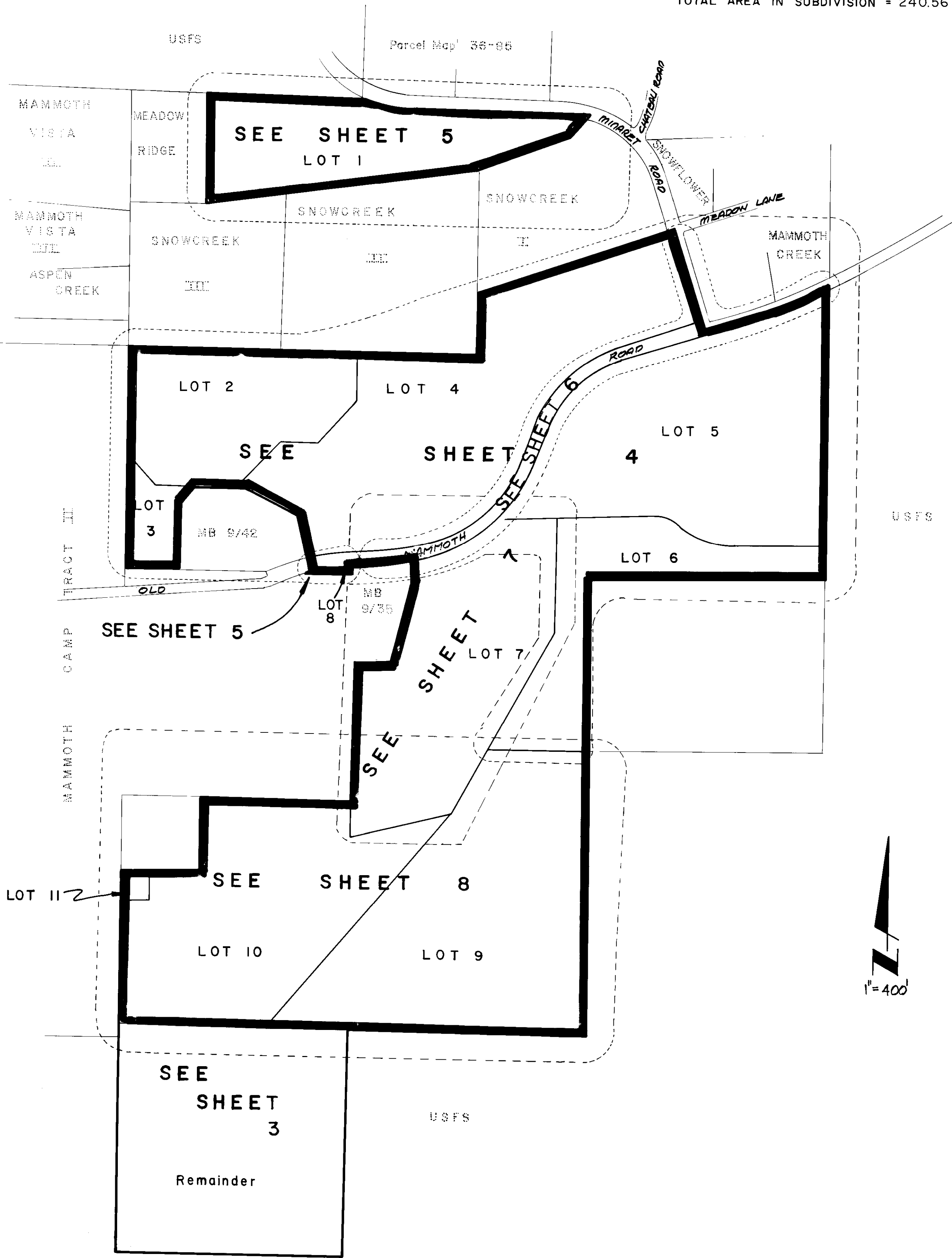


# TRACT NO. 36-134

IN THE UNINCORPORATED TERRITORY OF MONO COUNTY, CALIFORNIA

BEING A RESUBDIVISION OF A PORTION OF SECTIONS 2,3,10 TOWNSHIP 4 SOUTH,  
RANGE 27 EAST, M.D.B. & M. DESCRIBED IN DEED RECORDED IN BOOK 245  
PAGES 83-88 OF OFFICIAL RECORDS OF SAID COUNTY.

TOTAL AREA IN STREETS = 6.18 AC.  
TOTAL AREA IN SUBDIVISION = 240.56 AC.



## INDEX

SEE SHEET 3 FOR SECTIONAL SURVEY