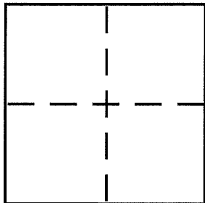


BK 31 Pg 25  
Document Number CR3486

# CORNER RECORD

City of BERKELEY County of ALAMEDA, California

Brief Legal Description MON B 3544, CITY OF BERKELEY



## CORNER TYPE

Government Corner ☐ Control ☐  
Meander ☐ Property ☐  
Rancho ☐ Other ☒  
Date of Survey 8-15-08

## COORDINATES (Optional)

N. \_\_\_\_\_  
E. \_\_\_\_\_  
Zone \_\_\_\_\_ NAD27 ☐ NAD83 ☐  
NAD83 Epoch \_\_\_\_\_  
Elev. \_\_\_\_\_  
Vert. Datum: NGVD29 ☐ NAVD88 ☐  
Meas. Units: Metric ☐ Imperial ☐

Corner - Left as found ☒ Found and tagged ☐ Established ☐ Reestablished ☐ Rebuilt ☐

Identification and type of corner found: Evidence used to identify or procedure used to establish or reestablish the corner:

CHECKED MON AFTER STREET CONSTRUCTION  
SEE PAGE 2

A description of the physical condition of the monument as found and as set or reset:

SEE PAGE 2

## SURVEYOR'S STATEMENT

This Corner Record was prepared by me or under my direction in conformance with the Land Surveyor's Act on SEPT. 2 2008

Signed [Signature] P.L.S or R.C.E. No. PLS 5003

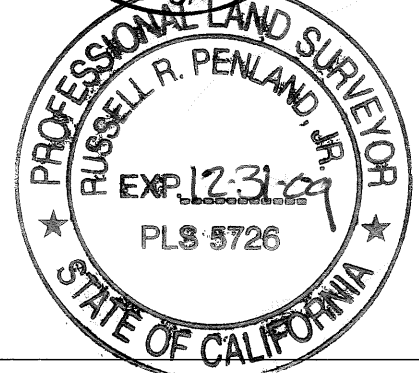
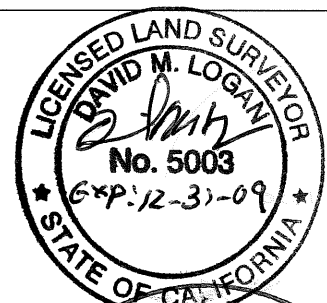
## COUNTY SURVEYOR'S STATEMENT

This Corner Record was received 9-26-08  
and examined and filed 11-9-08

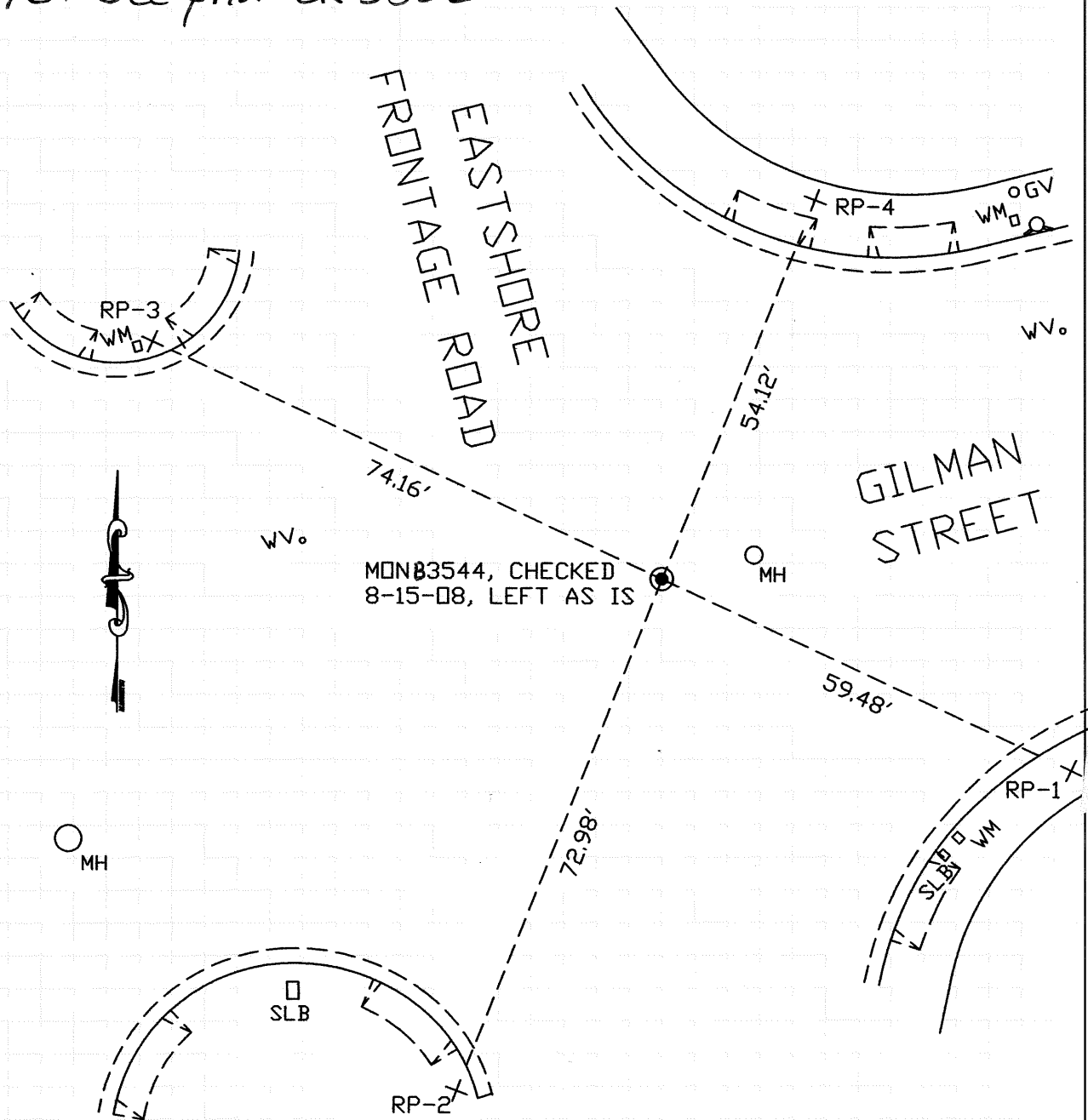
Signed [Signature] P.L.S or R.C.E. No. 5726

Title COUNTY SURVEYOR

County Surveyor's Comment \_\_\_\_\_



NOTE: See prior CR 3352



# LEGEND

- STANDARD WELL-TYPE CITY MONUMENT WITH 1/8" PIN, CHECKED AFTER CONSTRUCTION AND LEFT AS IS.
- + CUT REFERENCE CROSS IN SIDEWALK

## NOTE:

THE EXISTING MONUMENT AS SHOWN IS REFERENCED BY STRAIGHT LINES BETWEEN RP-1 TO RP-3 AND RP-2 AND RP-4.