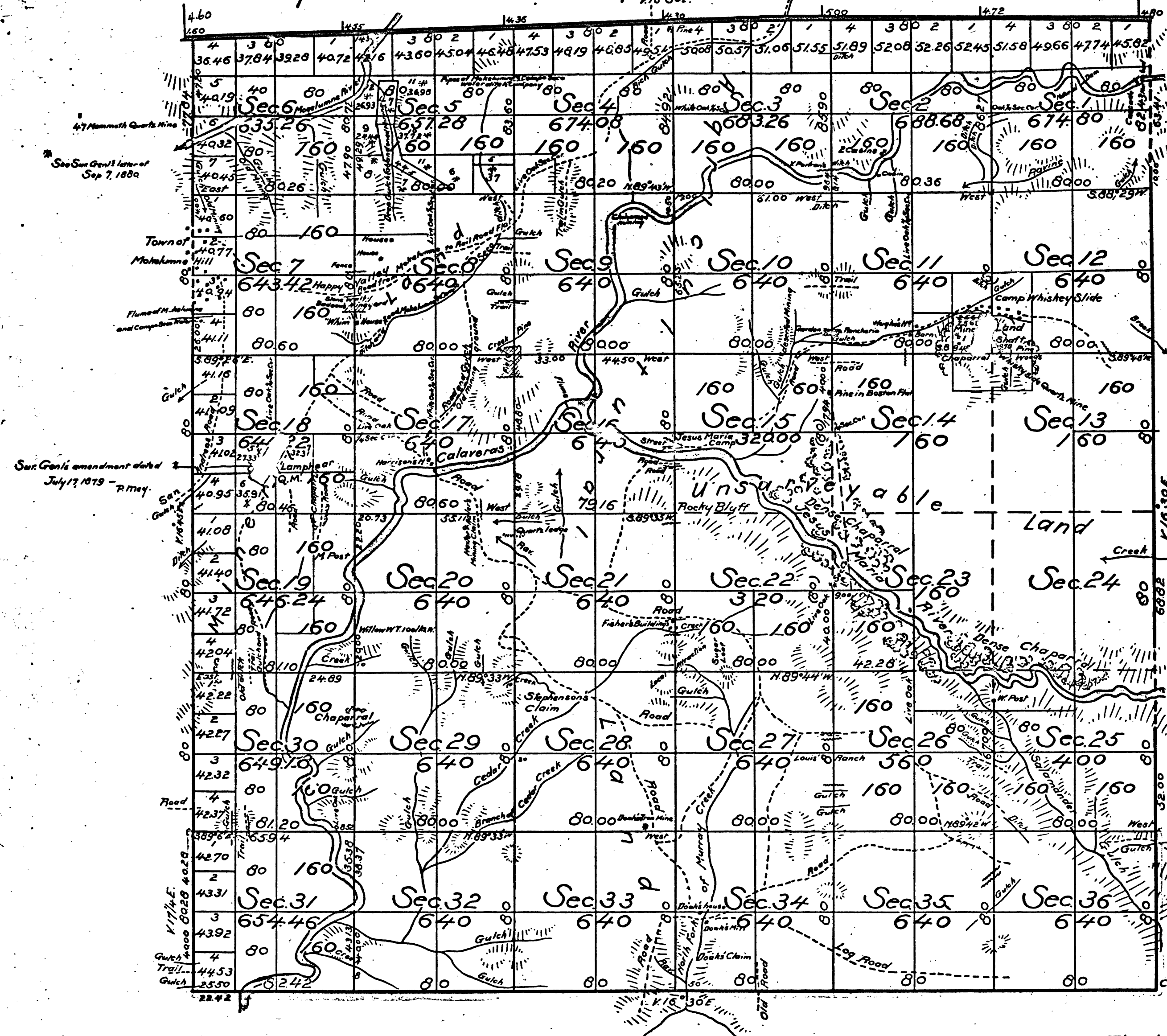


Township N°5 North Range N°12 East Mount Diablo Meridian



Aggregate Area of Public land surveyed	20,210.82 Acres
Estimated Publicland unsurveyed	3,040.00 "
Aggregate	23,250.82 "

Note. The Township lines colored green re-surveyed by H. F. Terry, and the meanders of the right bank of rivers surveyed by him are not charged in his account.

Subdivision lines run at a Variation of 16°30' East  
Cedar T. Cor.

Surveys Designated	By Whom Surveyed	Date of Contract	Amount of Surveys	When Surveyed
Township lines	Fleming Amyx	September 30 <sup>th</sup> 1859		1859
Township lines colored green, re-surveyed	Henry F. Terry	November 2 <sup>nd</sup> 1869		1869-1870
Section lines	"	"	53 miles 54 chs 63 1/2	1869-1870
Meander lines	"	"		February 9 <sup>th</sup> 1870

The above Map of Township N°5 North, Range N°12 East, Mount Diablo Meridian, is strictly conformable to the field notes of the surveys thereof on file in this Office, which have been examined and approved.  
Surveyor General's Office  
San Francisco, California  
January 18<sup>th</sup> 1871.

*Sherman Day*  
Surr. Gen. Cal.

DEPARTMENT OF THE INTERIOR,  
GENERAL LAND OFFICE,  
Washington, D. C. Sept. 6, 1907.  
I hereby certify that this is a true copy  
of the plat of official survey of the lands  
to which it relates, on file in this office.

*Hughes, J. Ford*  
Recorder, General Land Office.

T 5 N. R 12 E. M. D.