

TRACT NO. 8261 GIANERA VILLAS
BK. 610 MAPS, PGS. 30 & 31

PARCEL MAP
BK. 434 MAPS, PG. 29

PARCEL MAP
BK. 466 MAPS, PG. 10

CITY OF
SANTA CLARA

BASSETT
STREET

TRACT NO. 8815
CONSISTING OF FIVE SHEETS
BEING PORTION OF PARCEL 1 OF
THAT CERTAIN PARCEL MAP FILED
FOR RECORD IN BOOK 675
OF MAPS AT PAGES 34-35,
SANTA CLARA COUNTY RECORDS,
AND LYING WITHIN THE CITY OF
SANTA CLARA, CALIFORNIA
SCALE: 1"=40' FEBRUARY, 1996

GIANERA STREET

GIANERA STREET

BASIS OF BEARINGS
THE BEARING N28°20'00"W ALONG THE CENTERLINE OF FULLER STREET AS SHOWN ON TRACT NO. 5945, FILED FOR RECORD IN BOOK 387 OF MAPS AT PAGES 8-9 AND TRACT NO. 5966, FILED FOR RECORD IN BOOK 390 OF MAPS AT PAGES 20-21, SANTA CLARA COUNTY RECORDS, AND AS FOUND MONUMENTED, WAS TAKEN AS THE BASIS OF BEARINGS SHOWN HEREON.

LANDS OF SCS DEVELOPMENT CO.

DEDICATED HEREON

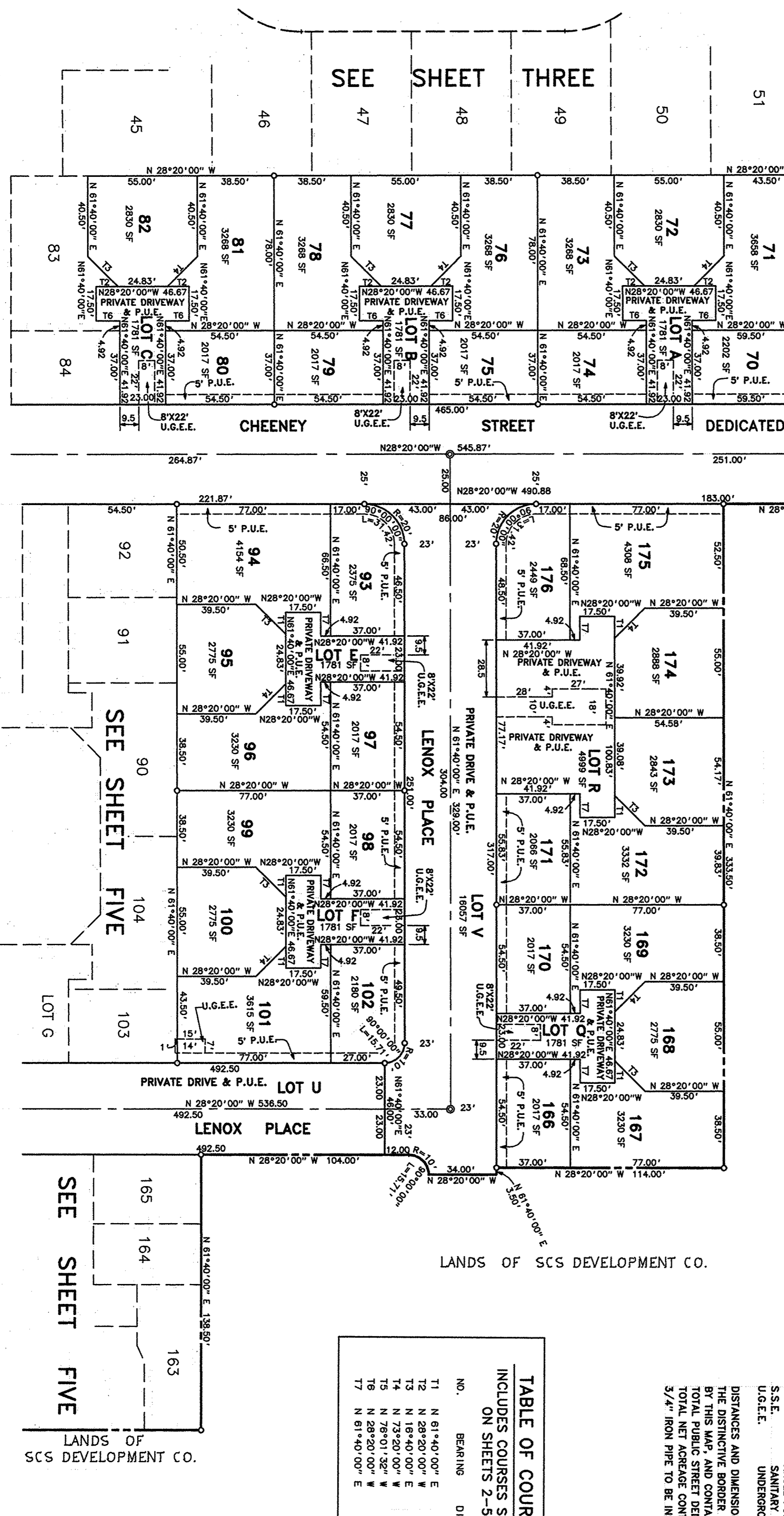


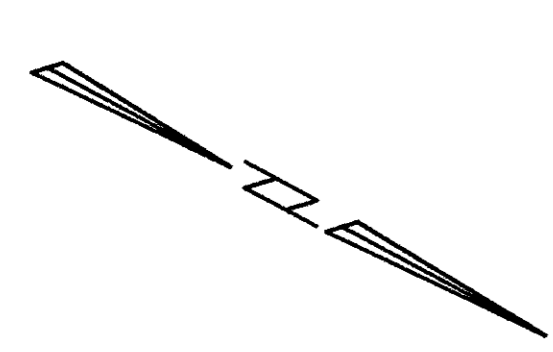
TABLE OF COURSES		
INCLUDES COURSES SHOWN ON SHEETS 2-5		
NO.	BEARING	DISTANCE
T1	N 61°40'00" E	10.92
T2	N 28°20'00" W	10.92
T3	N 16°40'00" E	21.33
T4	N 73°20'00" W	21.33
T5	N 76°01'32" W	11.49
T6	N 28°20'00" W	11.83
T7	N 61°40'00" E	11.83

CURVE TABLE		
INCLUDES CURVES SHOWN ON SHEETS 2-5		
NO.	DELTA	RADIUS LENGTH
C1	7°08'29"	25.00 3.12
C2	15°27'40"	45.00 12.14
C3	32°13'51"	45.00 25.31
C4	19°57'15"	50.00 17.41
C5	21°08'01"	50.00 18.41
C6	0°42'23"	1046.00 12.90
C7	8°53'50"	150.00 18.06

LEGEND & NOTES

- STANDARD CITY MONUMENT FOUND, UNLESS OTHERWISE NOTED
- STANDARD CITY MONUMENT SET (L.S. NO. 3656)
- 3/4" IRON PIPE FOUND, UNLESS OTHERWISE NOTED
- 3/4" IRON PIPE SET, UNLESS OTHERWISE NOTED (L.S. NO. 3656)
- DISTINCTIVE BORDER LINE
- P.U.E. PUBLIC UTILITY EASEMENT
- ANGLE POINT
- S.S.E. SANITARY SEWER EASEMENT
- U.G.E.E. UNDERGROUND ELECTRIC EASEMENT

DISTANCES AND DIMENSIONS ARE GIVEN IN FEET AND DECIMALS THEREOF. THE DISTINCTIVE BORDER LINE INDICATES THE BOUNDARY OF LAND SUBDIVIDED BY THIS MAP, AND CONTAINS 17.257 ACRES ±. TOTAL PUBLIC STREET DEDICATION CONTAINS 2.546 ACRES ±. TOTAL NET ACREAGE CONTAINS 14.711 ACRES ±. 3/4" IRON PIPE TO BE INSTALLED AT ALL PROPERTY CORNERS ON LOTS 1 THROUGH 89.



RECORDED 9217-96 FILE NO. 13463817 BOOK 682 MAPS, PAGES 23, 24, 25, 26 & 27

SHEET FOUR OF FIVE SHEETS

MACKEY & SOMPS
CIVIL ENGINEERING • LAND PLANNING • LAND SURVEYING
SAN JOSE, CA
S. 1569

26

13463817

26

Handwritten notes and signatures at the bottom of the page, including dates like 12-24-96 and 12-25-96, and names like J. J. Somps.