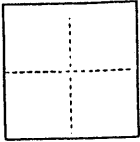


(For County Use Only)

CORNER RECORD

CR 183

COUNTY OF Alameda T. N/A R. N/A N/A MERIDIAN CALIFORNIA
 CORNER TYPE: GOV'T. CORNER ☐ MEANDER ☐ RANCHO ☐ CONTROL ☐ OTHER ☒
 CORNER IDENTIFICATION — DATE OF VISIT JUNE 19 92



Subdivision Lot corners for:

A PORTION OF LOTS 5, 6, AND 7, BLOCK M
BOOK 7, PAGE 85

CORNER — LEFT AS FOUND ☐ FOUND AND TAGGED ☐ REESTABLISHED OBLITERATED CORNER ☒ REBUILT ☐

PHYSICAL DESCRIPTION OF CORNER FOUND; EVIDENCE AND METHOD USED TO IDENTIFY OR REESTABLISH

Reestablished from record data and found monuments as shown on the above named map. See sketch below for physical description of monuments found and set.

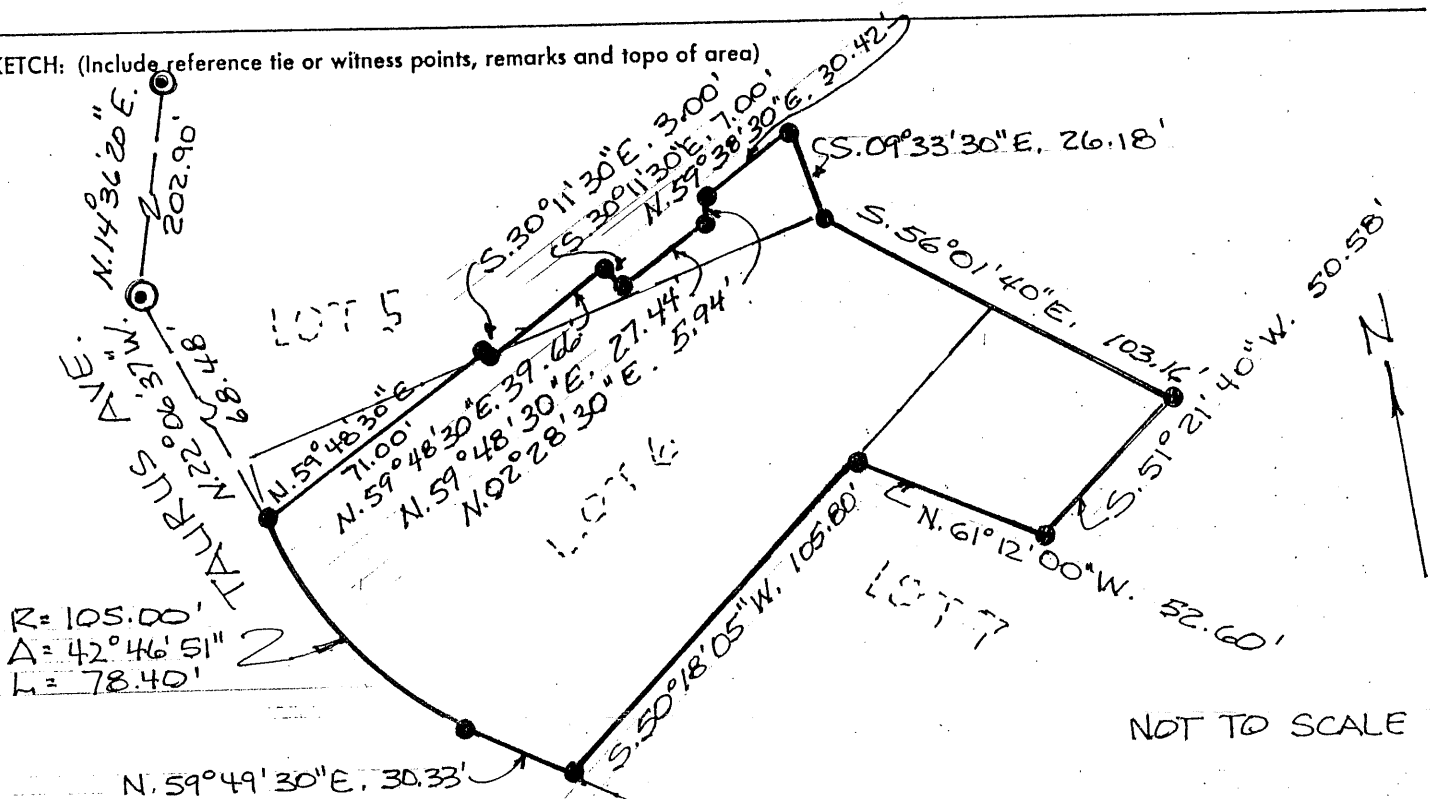
PHYSICAL DESCRIPTION OF MONUMENTS REBUILT OR PERPETUATED

- FOUND CITY OF OAKLAND MONUMENT
- SET 60d NAIL

CALIFORNIA COORDINATE SYSTEM ORDER: FIRST ☐ SECOND ☐ THIRD ☐
 STATIONS USED: NGS (USC & GS) ☐ N ☒ COUNTY ☒ A ☒ STATION ☐ STATION ☐
 ZONE ☐ ELEVATION ☐ NORTHINGS (Y) ☐ EASTINGS (X) ☐

(Fold)

SKETCH: (Include reference tie or witness points, remarks and topo of area)



SURVEYOR'S CERTIFICATE

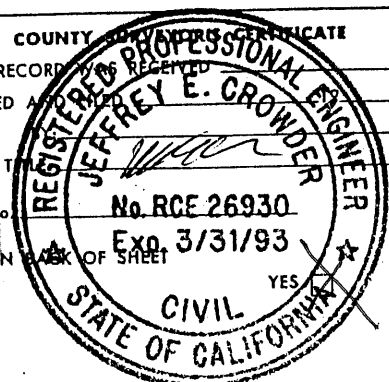
THIS CORNER RECORD WAS PREPARED BY ME OR UNDER MY
 DIRECTION IN CONFORMANCE WITH THE LAND SURVEYORS ACT
 ON 6/30 19 92

SIGNED: [Signature]L.S. or R.C.E. No.: 26930

COUNTY Alameda PROFESSIONAL LAND SURVEYOR
 THE CORNER RECORD WAS RECEIVED AND EXAMINED BY

DOCUMENT No. 12-31-03

STATEMENT ON BACK OF SHEET



SEAL

PLS 5726

DEPUTY COUNTY SURVEYOR

RECEIVED ON: 7-6-92FILED ON: 8-21-00

28190
THE SURVEYOR ADVISED US THAT NO PERMANENT
MONUMENTS WERE SET. THIS CORNER RECORD WAS
FILED FOR INFORMATIONAL PURPOSES.

Filed
8-21-00

CR 183

COUNTY SURVEYOR'S COMMENT:

SINCE THIS CORNER RECORD ESTABLISHES ONE OR MORE POINTS
OR LINES NOT SHOWN ON ANY SUBDIVISION MAP, OFFICIAL MAP, OR
RECORD OF SURVEY, THE COUNTY SURVEYOR IS OF THE OPINION THAT
A RECORD OF SURVEY SHOULD ALSO BE FILED.

SEE SECTION 8762(E) OF THE LAND SURVEYOR'S ACT.

A FILED COPY WAS TRANSMITTED TO THE SURVEYOR ON
SEE SECTION 8773.2 OF THE L.S. ACT.

p. 2.