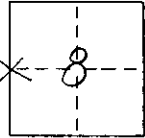


CORNER RECORD

COUNTY OF MONO T. 2 S R. 27 E NSE E MERIDIAN CALIFORNIA
 CORNER TYPE: GOV'T. CORNER ☒ MEANDER ☐ RANCHO ☐ CONTROL ☐ OTHER ☐
 CORNER IDENTIFICATION - DATE OF VISIT 11/17/1977



CORNER - LEFT AS FOUND ☐ FOUND AND TAGGED ☐ REESTABLISHED OBLITERATED CORNER ☐ REBUILT ☐

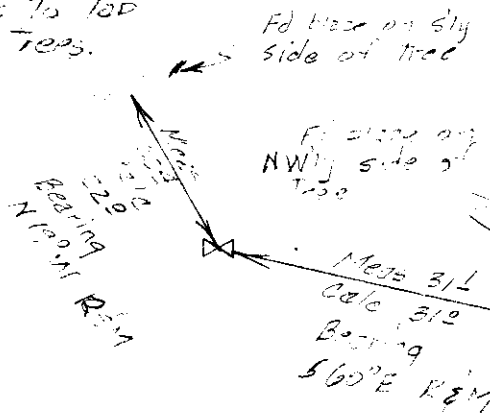
PHYSICAL DESCRIPTION OF CORNER FOUND: EVIDENCE AND METHOD USED TO IDENTIFY OR REESTABLISH Using from corner
and using a compass, found two bearing trees that had fallen over and were
partially decayed

PHYSICAL DESCRIPTION OF MONUMENTS REBUILT OR PERPETUATED Pictures taken: Pict #1 S.D. #152 - NHT
at Mon 101 on and BT; Exp #3 - 56° E at Mon 200 and BT; Exp #1 - 56° on
NHT BT; Exp #5 - 56° on 56° E BT; Exp #6 - Bottom of 56° E BT

CALIFORNIA COORDINATE SYSTEM ORDER: FIRST ☐ SECOND ☐ THIRD ☐
 STATIONS USED: NGS (USC & GS) ☐ STATE ☒ COUNTY ☐ OTHER ☐ STATION 101.376 STATION 101.378
 ZONE 3 ELEVATION NORTHINGS (Y) 472,303.119 EASTINGS (X) 2,427,836.791

SKETCH: (Include reference tie or witness points, remarks and topo of area)

* Bearing trees have fallen
 and are partially burned.
 Calculated bearings to top
 roots of bearing trees.



F.D. 200 on NW 1/4 side of tree.
 nailed to roots of tree.

SURVEYOR'S CERTIFICATE

THIS CORNER RECORD WAS PREPARED BY ME OR UNDER MY
 DIRECTION IN CONFORMANCE WITH THE LAND SURVEYORS ACT
 ON November 17, 1977

SIGNED: [Signature]

L.S. or R.C.E. No.

SEAL

COUNTY SURVEYOR'S CERTIFICATE

THIS CORNER RECORD WAS RECEIVED 19
 AND EXAMINED AND FILED 19

BY:

TITLE:

DOCUMENT No. 2527-8-2

STATEMENT ON BACK OF SHEET

YES ☐ NO ☐