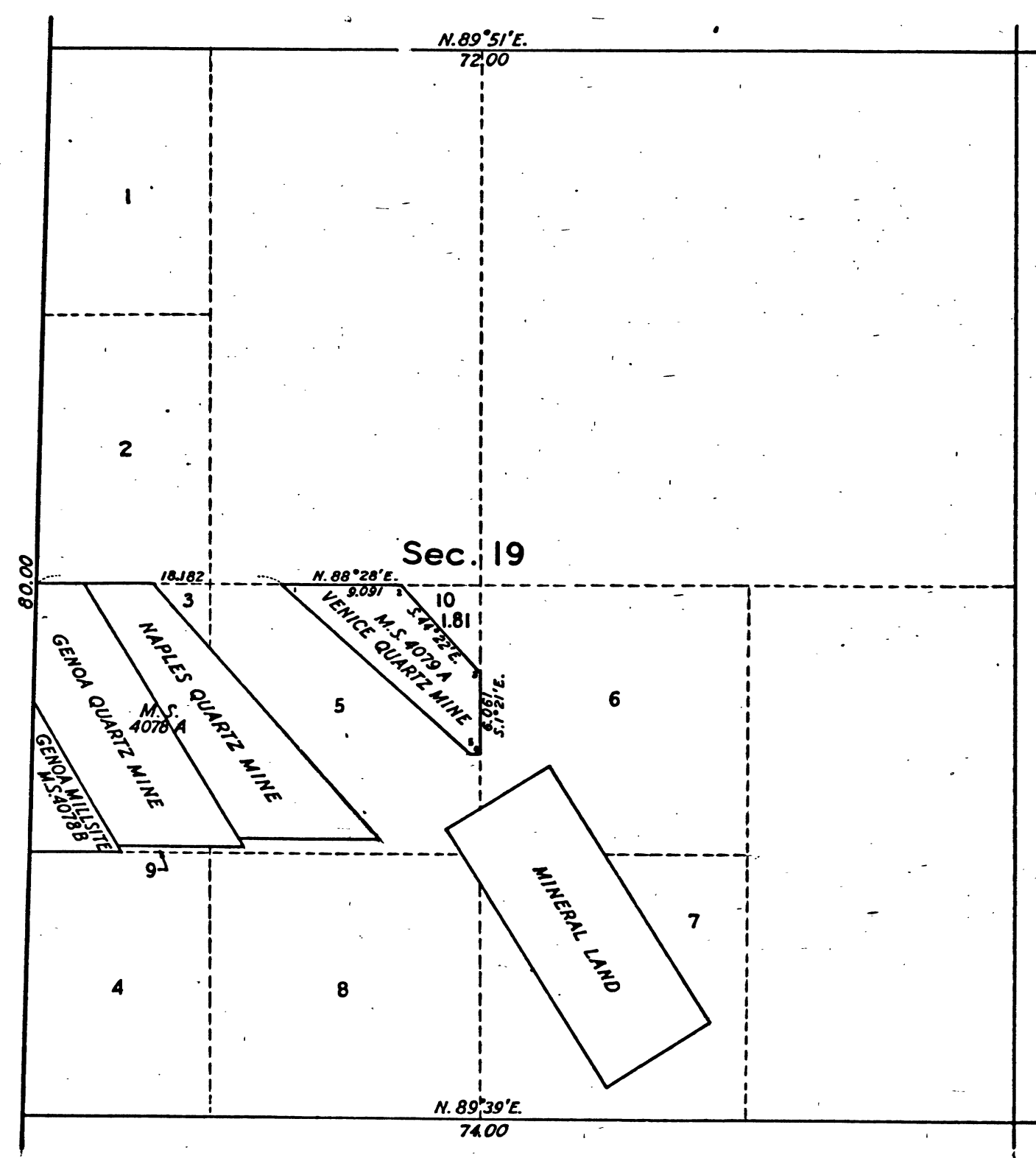


TOWNSHIP N° 3 NORTH, RANGE N° 13 EAST, MOUNT DIABLO MERIDIAN, CALIFORNIA.

SUPPLEMENTAL PLAT OF SECTION 19



Scale: 10 chains (or 660 feet) to an inch.



PUBLIC SURVEY OFFICE
Glendale, California, September 12, 1934.

The above supplemental plat of section 19, Township No. 3 North, Range No. 13 East, of the Mount Diablo Meridian, California, based upon the plats approved August 30, 1871 and December 17, 1903, replacing the Venice millsite of mineral survey No. 40798 by a regulation lot number and acreage, to accommodate isolated tract application Sacramento 028175, prepared in accordance with instructions contained in the Commissioner's letter "N" dated August 31, 1934, is hereby approved.

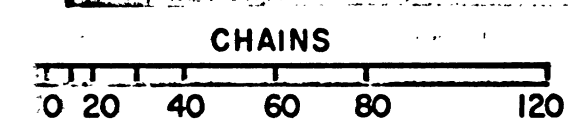
John D. Adams
Office Cadastral Engineer.

DEPARTMENT OF THE INTERIOR
GENERAL LAND OFFICE
Washington, D. C., OCTOBER 30, 1934.

The amended lotting represented by this supplemental plat having been correctly made in accordance with the regulations of this office, the plat is hereby accepted.

D. K. Gaudin
ACTING Assistant Commissioner.

41 232



TOWN DIABLO MERIDIAN

BLM 99-