

Vol 6 pg 63-C

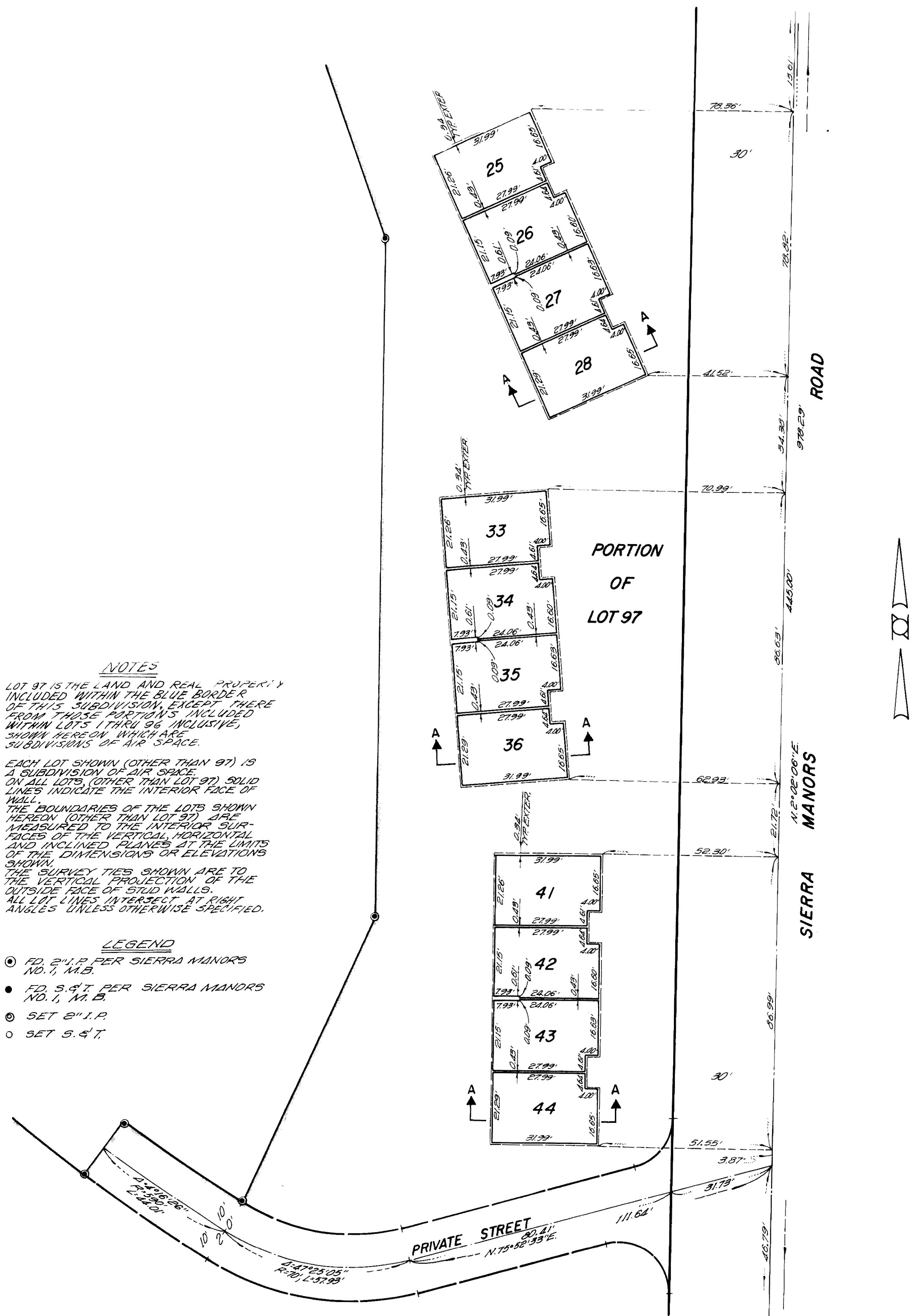
SCALE: 1" = 20'

SIERRA MANORS NO.2

IN THE UNINCORPORATED TERRITORY OF THE COUNTY OF MONO
FOR CONDOMINIUM PURPOSES

SHEET 4 OF 9 SHEETS

Vol 6 pg 63-C



NOTES

LOT 97 IS THE LAND AND REAL PROPERTY INCLUDED WITHIN THE BLUE BORDER OF THIS SUBDIVISION, EXCEPT THERE FROM THOSE PORTIONS INCLUDED WITHIN LOTS 1 THRU 96 INCLUSIVE, SHOWN HEREON WHICH ARE SUBDIVISIONS OF AIR SPACE.

EACH LOT SHOWN (OTHER THAN 97) IS A SUBDIVISION OF AIR SPACE. ON ALL LOTS, (OTHER THAN LOT 97) SOLID LINES INDICATE THE INTERIOR FACE OF WALL. THE BOUNDARIES OF THE LOTS SHOWN HEREON (OTHER THAN LOT 97) ARE MEASURED TO THE INTERIOR SURFACES OF THE VERTICAL, HORIZONTAL AND INCLINED PLANES AT THE LIMITS OF THE DIMENSIONS OR ELEVATIONS SHOWN. THE SURVEY TIES SHOWN ARE TO THE VERTICAL PROJECTION OF THE OUTSIDE FACE OF STUD WALLS. ALL LOT LINES INTERSECT AT RIGHT ANGLES UNLESS OTHERWISE SPECIFIED.

LEGEND

- FD. 2" I.P. PER SIERRA MANORS NO. 1, M.B.
- FD. 5" I.P. PER SIERRA MANORS NO. 1, M.B.
- SET 2" I.P.
- SET 5" I.P.

Vol 6 pg 63-C