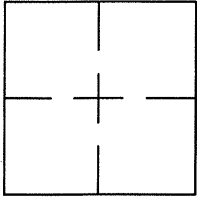


**CORNER RECORD**

Document Number CR 7757  
 City of BERKELEY County of ALAMEDA, California

Brief Legal Description WELL MONUMENT LOCATED WITHIN THE INTERSECTION OF CEDAR STREET AND JUANITA WAY (CITY OF BERKELEY: B2187)



**CORNER RECORD**

Government Corner ☐ Control ☒  
 Meander ☐ Property ☐  
 Rancho ☐ Other ☐  
 Date of Survey 10/26/15

**COORDINATES**  
*(Optional)*

N. \_\_\_\_\_  
 E. \_\_\_\_\_  
 Zone \_\_\_\_\_ Datum \_\_\_\_\_  
 Elev. \_\_\_\_\_

Corner — Left as found ☒ Found and tagged ☐ Established ☐ Reestablished ☐ Rebuilt ☐

Identification and type of corner found: Evidence used to identify or procedure used to establish or reestablish the corner:  
FOUND 2" BRASS DISC IN MONUMENT WELL LOCATED WITHIN THE INTERSECTION OF CEDAR STREET AND JUANITA WAY (CITY OF BERKELEY: B2187)

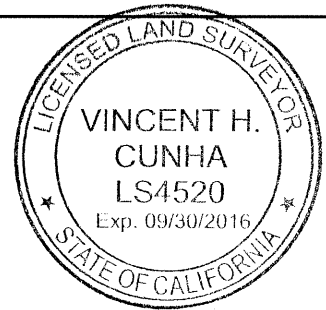
THIS POINT WAS REFERENCED PRIOR TO A CONSTRUCTION PROJECT IN THE VICINITY.

A description of the physical condition of the monument as found and as set or reset:  
FOUND AND SET POINTS AS SHOWN ON PAGE 2.

THE TIES SHOWN HEREON ARE FOR THE PURPOSE OF PERPETUATING FOUND MONUMENTATION.  
NO CLAIM IS MADE AS TO THE RELATIONSHIP OF THE POINTS OR LINES SHOWN HEREON TO TRUE BOUNDARY LOCATIONS.

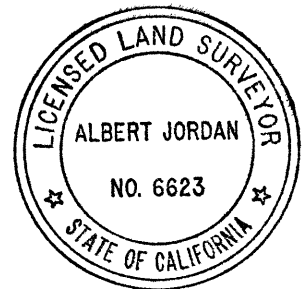
**SURVEYOR'S STATEMENT**

This Corner Record was prepared by me or under my direction in conformance with the Land Surveyors' Act on NOVEMBER 28, 2015.  
 Signed Vincent H. Cunha L.S. Number LS 4520  
 VINCENT H. CUNHA



**COUNTY SURVEYOR'S STATEMENT**

This Corner Record was received 12-02 2015 and examined and filed 12-28 2015.  
 Signed Albert Jordan Title Deputy County Surveyor



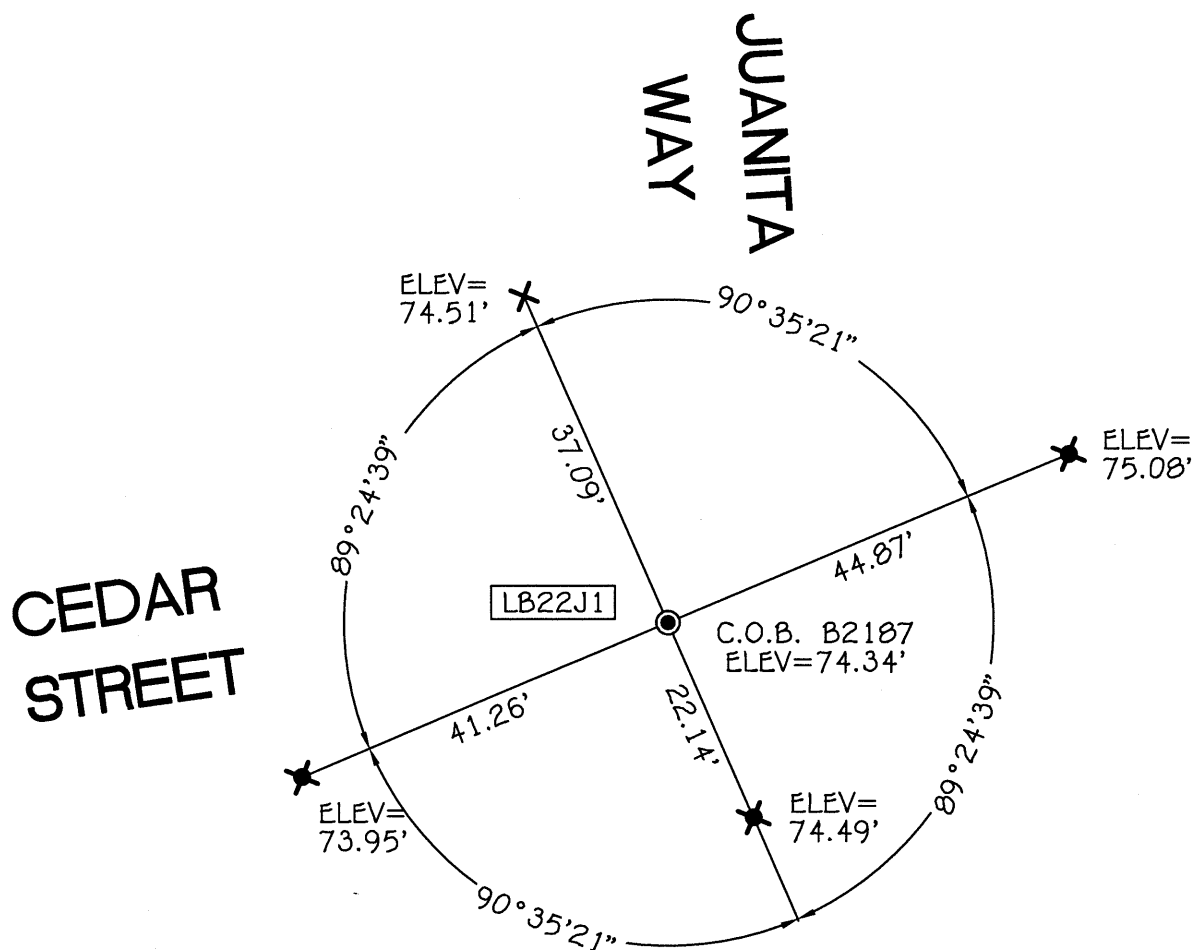
County Surveyor's Comment \_\_\_\_\_  
 \_\_\_\_\_  
 \_\_\_\_\_  
 \_\_\_\_\_



SCALE: 1"=20'

## LEGEND

- FOUND 2" BRASS DISC IN MONUMENT WELL
- ✕ FOUND CUT CROSS IN CONCRETE
- ✕ SET CUT CROSS IN CONCRETE
- C.O.B. CITY OF BERKELEY
- AA##A# ALAMEDA COUNTY MONUMENT ID



## NOTE

ELEVATIONS SHOWN HEREON ARE BASED  
UPON CITY OF BERKELEY VERTICAL DATUM  
C.O.B. B2187 TAKEN AS ELEV=74.34'