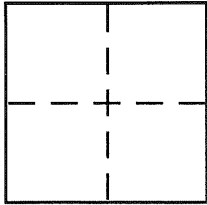


CORNER RECORDCity of BerkeleyDocument Number CR 1842
County of Alameda, CaliforniaBrief Legal Description The Alameda**CORNER TYPE**

Government Corner ☐ Control ☐
 Meander ☐ Property ☐
 Rancho ☐ Other ☒
 Date of Survey 11/21/02

COORDINATES (Optional)

N. _____
 E. _____
 Zone _____ NAD27 ☐ NAD83 ☐
 NAD83 Epoch _____
 Elev. _____
 Vert. Datum: NGVD29 ☐ NAVD88 ☐
 Meas. Units: Metric ☐ Imperial ☐

Corner – Left as found ☐ Found and tagged ☐ Established ☐ Reestablished ☐ Rebuilt ☒

Identification and type of corner found: Evidence used to identify or procedure used to establish or reestablish the corner:

Standard City of Berkeley street monument on The Alameda approximately 218' north
of the intersection of The Alameda and Thousand Oaks Boulevard.

The monument was referenced using local ties. See reverse.

A description of the physical condition of the monument as found and as set or reset: _____

Monument well with 2" City of Berkeley brass disc was set.

SURVEYOR'S STATEMENT

This Corner Record was prepared by me or under my direction in conformance with
 the Land Surveyor's Act on November 22, 2002

Signed [Signature] P.L.S or R.C.E. No. L.S. 6884

COUNTY SURVEYOR'S STATEMENT

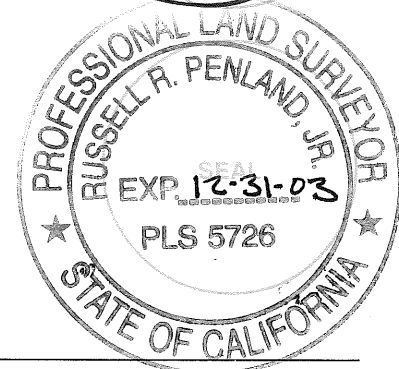
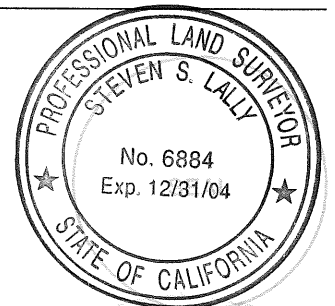
This Corner Record was received 01-03-03

and examined and filed 9-17-03

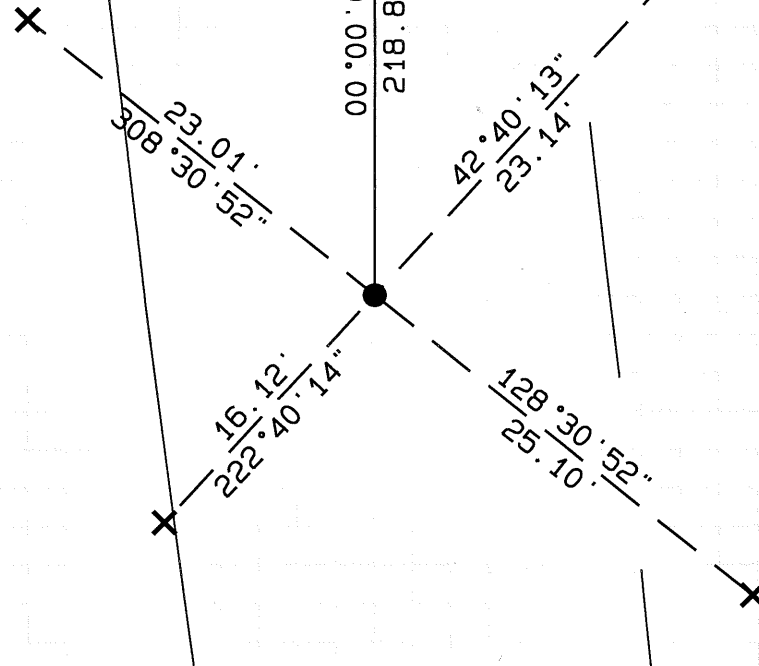
Signed [Signature] P.L.S or R.C.E. No. 5726

Title COUNTY SURVEYOR

County Surveyor's Comment _____



THOUSAND
OAKS BLVD.



THE
ALAMEDA

● 2" CITY OF BERKELEY BRASS DISC

× SCRIBED CROSS ON CURB

SCALE: 1" = 10'