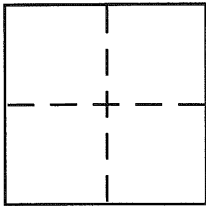


CORNER RECORDDocument Number CR 1335City of OAKLANDCounty of ALAMEDA, CaliforniaBrief Legal Description LOT 1269 & 1270, FORESTLAND HEIGHTS (10M 81)**CORNER TYPE**

Government Corner ☐ Control ☐
 Meander ☐ Property ☒
 Rancho ☐ Other ☐
 Date of Survey 26 FEB. 2000

COORDINATES (Optional)

N. _____
 E. _____
 Zone _____ NAD27 ☐ NAD83 ☐
 NAD83 Epoch _____
 Elev. _____
 Vert. Datum: NGVD29 ☐ NAVD88 ☐
 Meas. Units: Metric ☐ Imperial ☐

Corner - Left as found ☐ Found and tagged ☐ Established ☒ Reestablished ☐ Rebuilt ☐

Identification and type of corner found: Evidence used to identify or procedure used to establish or reestablish the corner:

FOUND CONCRETE MONUMENT WITH PIN PER (10 M 81)

A description of the physical condition of the monument as found and as set or reset:

FOUND 2" WOOD HUB WITH TACK, NRM. FOUND CROSS CUT
ON WALL, NRM. SET 5/8" REBAR WITH PLASTIC CAP, LS 4961.
SET P.K. NAIL WITH BRASS TAG, LS 4961.
SET 2" WOOD HUB WITH BRASS TAG, LS 4961.

SURVEYOR'S STATEMENT

This Corner Record was prepared by me or under my direction in conformance with
 the Land Surveyor's Act on MARCH 17 2000

Signed Robert J. Brunel P.L.S. or R.C.E. No. 4961

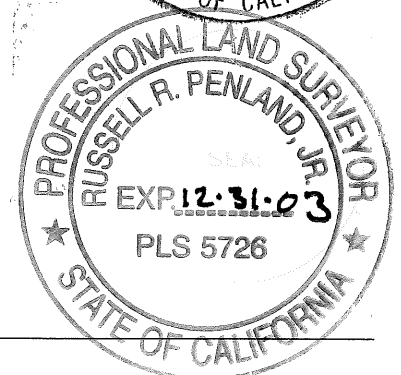
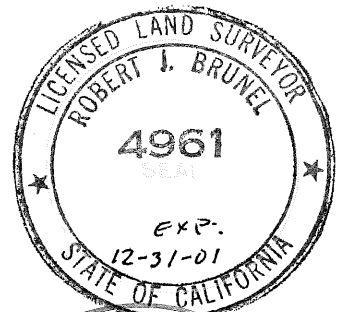
COUNTY SURVEYOR'S STATEMENT

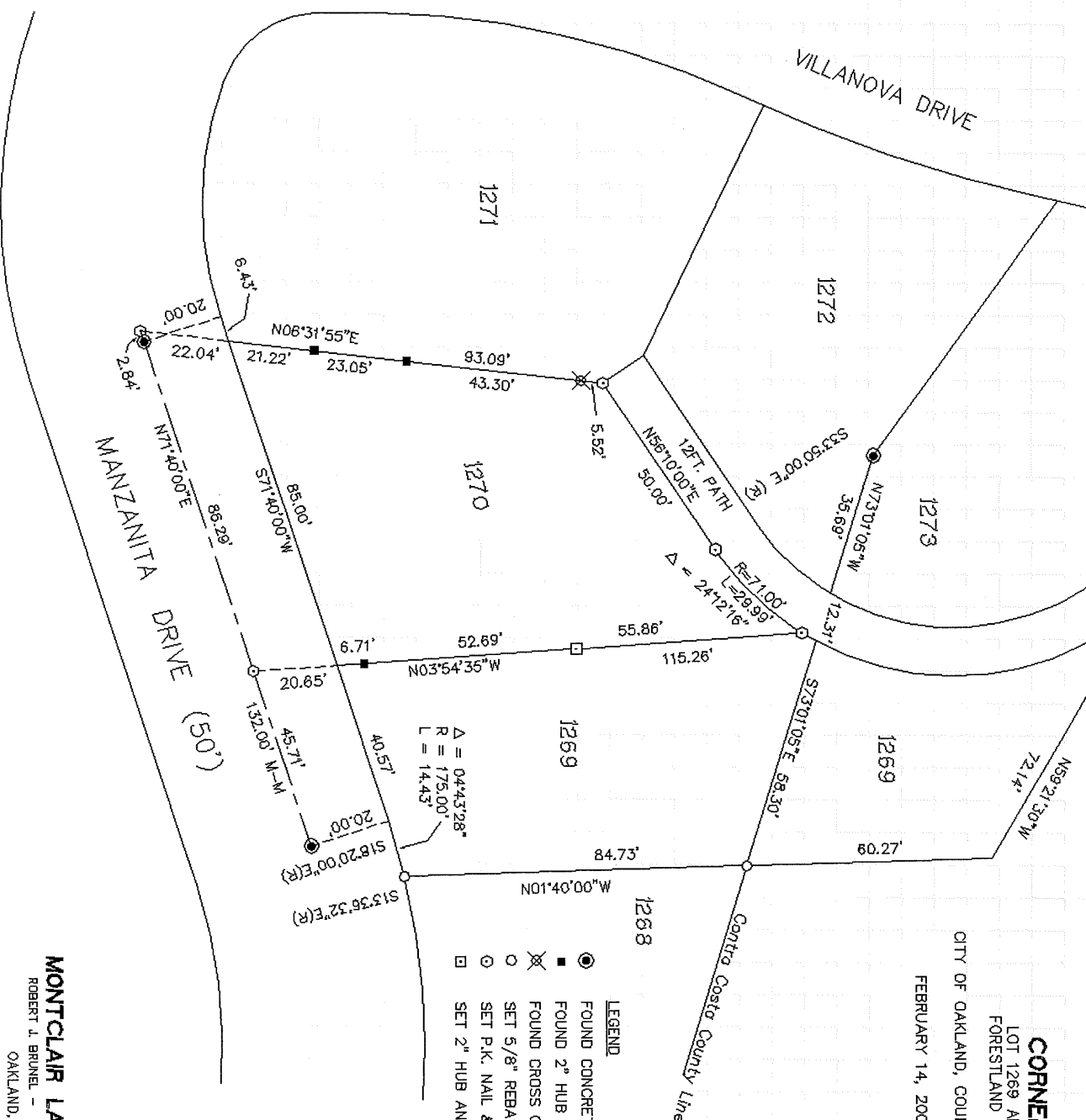
This Corner Record was received 4.3.2000
 and examined and filed 5.4.2000

Signed Russell R. Penland, Jr. P.L.S. or R.C.E. No. 5726

Title DEPUTY COUNTY SURVEYOR

County Surveyor's Comment _____





CORNER RECORD

LOT 1269 AND 1270, MAP OF
FORESTLAND HEIGHTS (10 M 81)

CITY OF OAKLAND, COUNTY OF ALAMEDA, CALIFORNIA

FEBRUARY 14, 2000 SCALE: 1" = 40'

LEGEND

- FOUND CONCRETE MONUMENT PER (10 M 81)
- FOUND 2" HUB AND TACK, NRM
- ⊗ FOUND CROSS ON WALL, NRM
- SET 5/8" REBAR WITH PLASTIC CAP LS 4961
- ⊙ SET P.K. NAIL & BRASS TAG, LS 4961
- SET 2" HUB AND TAG, LS 4961

MONTCLAIR LAND SURVEYING

ROBERT J. BRUNEL - LICENSED LAND SURVEYOR
OAKLAND, CALIFORNIA

F.B. NO. 127

DUNNECR.DWG

JOB NO. 100-224