

LEGEND

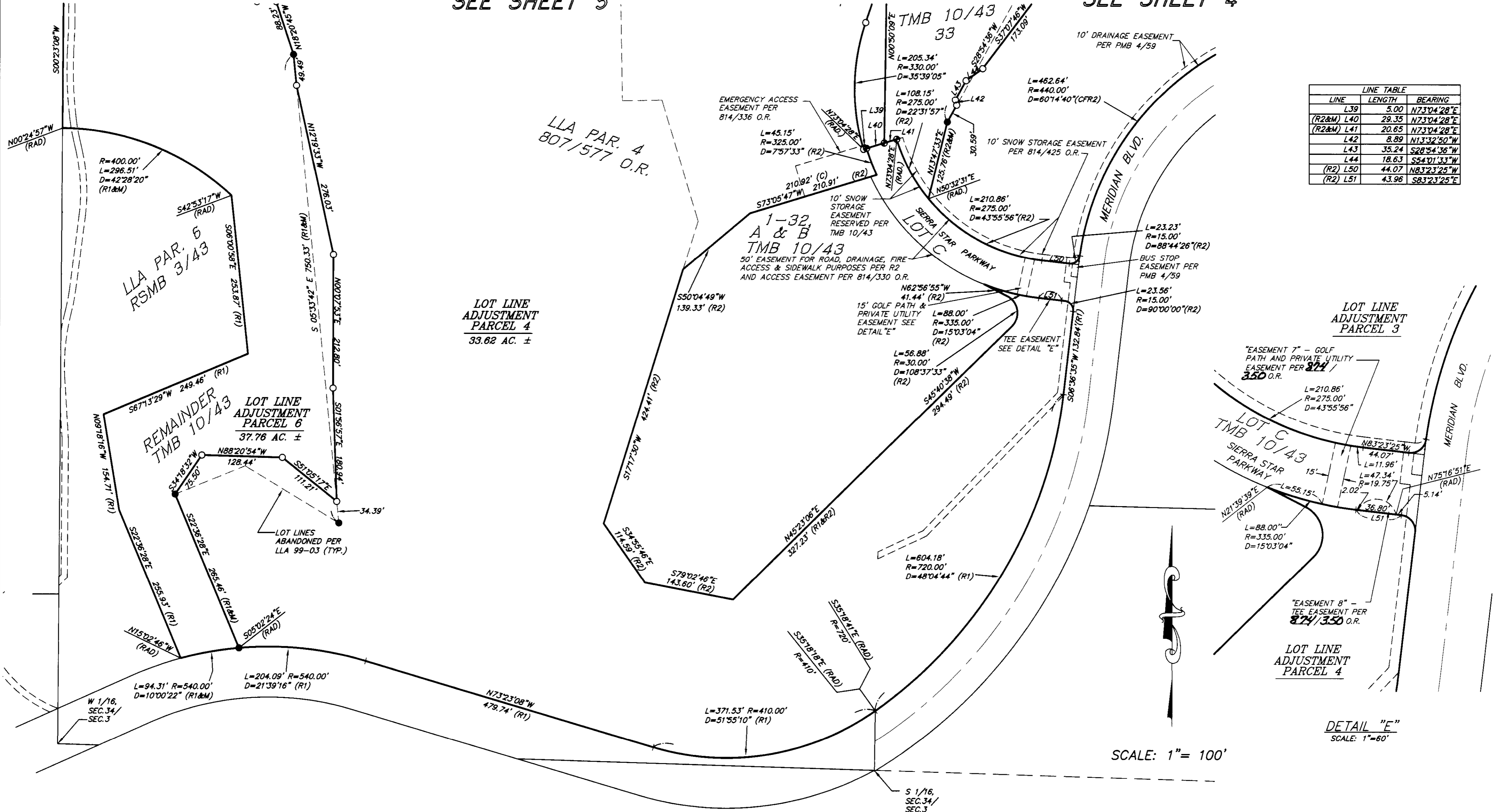
- SET 5/8" REBAR & CAP, "LS 4587",
 - FOUND MONUMENT, "LS 4587" AS SET PER R1 UNLESS OTHERWISE NOTED
 - ⊙ SET LEAD & TAG, "LS 4587"
 - FOUND 5/8" REBAR & CAP, "LS 4587" AS SET PER R2
- R1-RSMB 3/43
R2-TMB 10/43

RECORD OF SURVEY 36-131

TOWN OF MAMMOTH LAKES, MONO COUNTY, CALIFORNIA
BEING A SURVEY OF LOT LINE ADJUSTMENT PARCELS 1-6 OF THE TOWN OF MAMMOTH LAKES LOT LINE ADJUSTMENT 99-03 PER CERTIFICATE OF COMPLIANCE RECORDED IN 874 / 311 O.R.

SEE SHEET 5

SEE SHEET 4



LINE TABLE		
LINE	LENGTH	BEARING
L39	5.00	N73°04'28"E
(R2&M) L40	29.35	N73°04'28"E
(R2&M) L41	20.65	N73°04'28"E
L42	8.89	N13°32'50"W
L43	35.24	S28°54'36"W
L44	18.63	S54°01'33"W
(R2) L50	44.07	N83°23'25"E
(R2) L51	43.96	S83°23'25"E

LOT LINE ADJUSTMENT PARCEL 4
33.62 AC. ±

LOT LINE ADJUSTMENT PARCEL 6
37.76 AC. ±

LOT LINE ADJUSTMENT PARCEL 3

LOT LINE ADJUSTMENT PARCEL 4

DETAIL "E"
SCALE: 1"=60'

SCALE: 1"= 100'