

FILED IN THE OFFICE OF THE COUNTY CLERK OF THE COUNTY OF MONO, STATE OF CALIFORNIA,  
THIS 3rd DAY OF July, 1974.

Ann M. Webb  
ANN M. WEBB  
COUNTY CLERK  
COUNTY OF MONO  
STATE OF CALIFORNIA

I HEREBY CERTIFY THAT THE WITHIN MAP SHOWING PROPOSED BOUNDARIES OF MONO COUNTY -  
JUNE LAKE ASSESSMENT DISTRICT NO. 3, MONO COUNTY, STATE OF CALIFORNIA, WAS APPROVED BY THE  
BOARD OF SUPERVISORS OF THE COUNTY OF MONO AT A REGULAR MEETING THEREOF, HELD ON THE  
2nd DAY OF July, 1974 BY ITS RESOLUTION NO. 74-68.

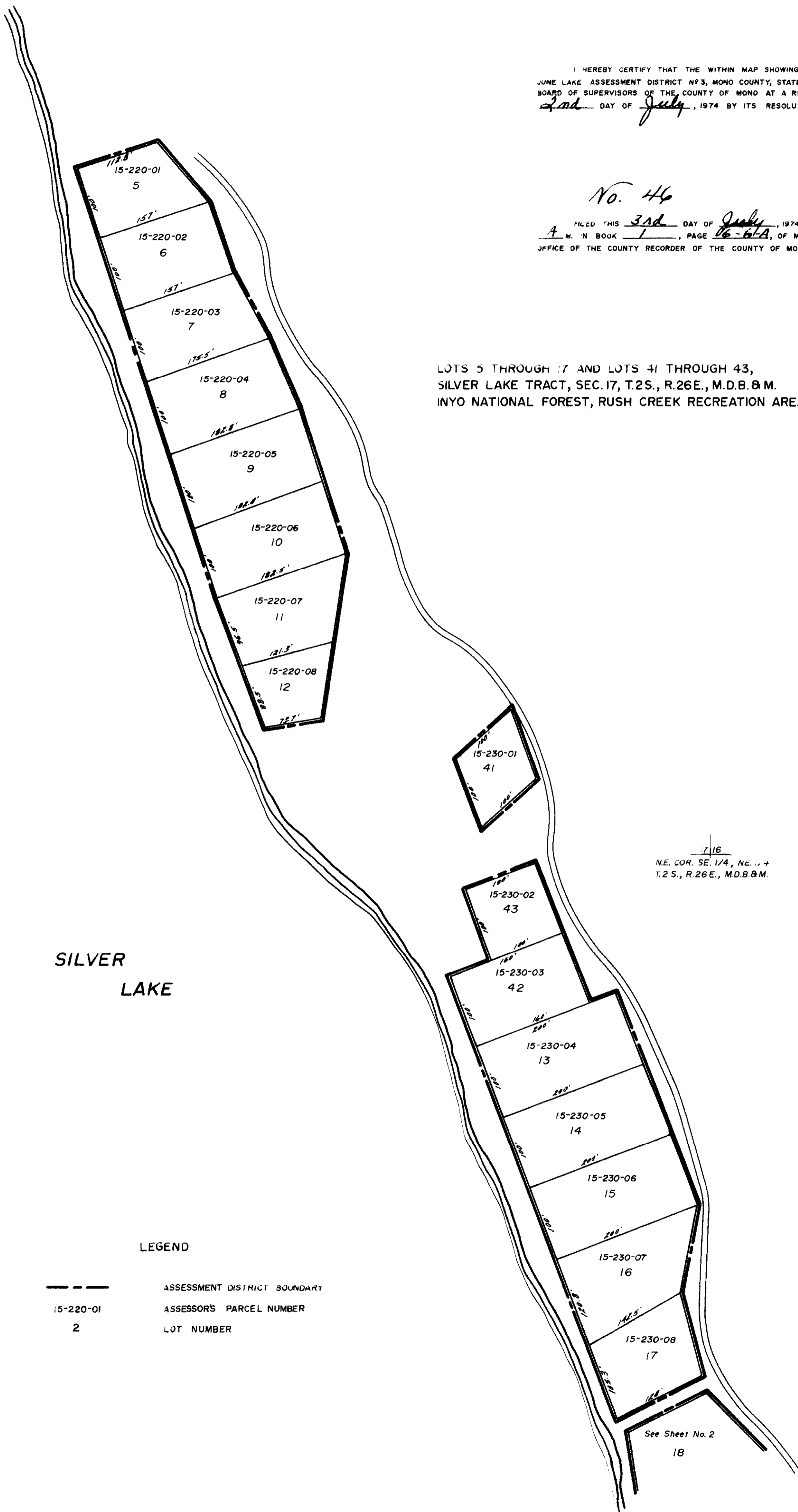
Ann M. Webb  
ANN M. WEBB  
COUNTY CLERK  
COUNTY OF MONO  
STATE OF CALIFORNIA

No. 46

FILED THIS 3rd DAY OF July, 1974, AT THE HOUR OF 11:00 O'CLOCK  
IN M. N. BOOK 1, PAGE 66-67A, OF MAPS OF ASSESSMENT DISTRICTS IN THE  
OFFICE OF THE COUNTY RECORDER OF THE COUNTY OF MONO, STATE OF CALIFORNIA.

Ann M. Webb  
ANN M. WEBB  
COUNTY RECORDER  
COUNTY OF MONO  
STATE OF CALIFORNIA

LOTS 5 THROUGH 17 AND LOTS 41 THROUGH 43,  
SILVER LAKE TRACT, SEC. 17, T.2S., R.26E., M.D.B. & M.  
INYO NATIONAL FOREST, RUSH CREEK RECREATION AREA



SILVER  
LAKE

LEGEND

--- ASSESSMENT DISTRICT BOUNDARY  
15-220-01 ASSESSOR'S PARCEL NUMBER  
2 LOT NUMBER

17 16  
N.E. COR. SE. 1/4, NE. 1/4, +  
T.2 S., R.26 E., M.D.B. & M.

See Sheet No. 2  
18

PROPOSED BOUNDARIES OF  
MONO COUNTY - JUNE LAKE ASSESSMENT DISTRICT NO. 3  
SANITARY SEWERAGE PROJECT  
MONO COUNTY, CALIFORNIA

GRAM/PHILLIPS ASSOCIATES, INC.  
MAMMOTH LAKES, CALIFORNIA  
Date: June, 1974

Sheet: 1 of 2

STONE & YOUNGBERG  
MUNICIPAL FINANCING CONSULTANTS, INC.  
SAN FRANCISCO, CALIFORNIA

ASSESSMENT BOOK Vol. 1 pg. 6