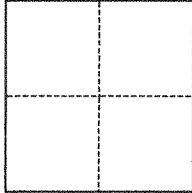


CORNER RECORD

Agency Index BK 146 PG 30Document Number CR 15758City of HAYWARD County of ALAMEDA, CaliforniaBrief Legal Description MONUMENT AT E ST & ROLLING RIDGE ST INTERSECTION**CORNER TYPE****COORDINATES (Optional)**

☐ Government Corner ☒ Control
☐ Meander ☐ Property
☐ Rancho ☐ Other

Date of Survey October 28, 2021

N. _____ E. _____

Elevation _____

Units ☐ Metric ☒ U.S. Survey Foot

Horizontal Datum _____

Zone _____ Epoch Date _____

Vertical Datum _____

☐ Complies with Public Resources Code §§8801-8819☐ Complies with Public Resources Code §§8890-8902PLS Act Ref.: ☐ 8765(d) ☒ 8771 ☐ 8773 ☐ Other:

Corner/
Monument: ☒ Left as found ☐ Established ☐ Rebuilt ☒ Pre-Construction
☐ Found and tagged ☐ Reestablished ☒ Referenced ☐ Post-Construction

Narrative of corner identified and monument as found, set, reset, replaced, or removed:

☒ See sheet #2 for description(s):**SURVEYOR'S STATEMENT**

This Corner Record was prepared by me or under my direction in conformance with

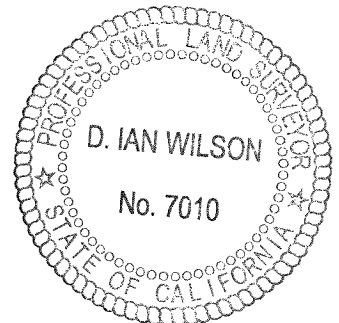
the Professional Land Surveyors' Act on

Signed Joseph M. Brajkovich P.L.S. or R.C.E. No. 5254**COUNTY SURVEYOR'S STATEMENT**

This Corner Record was received _____

and examined and filed FEB 23 2022Signed D. Ian Wilson P.L.S. or R.C.E. No. 7010Title ALAMEDA COUNTY SURVEYOR

County Surveyor's Comment _____

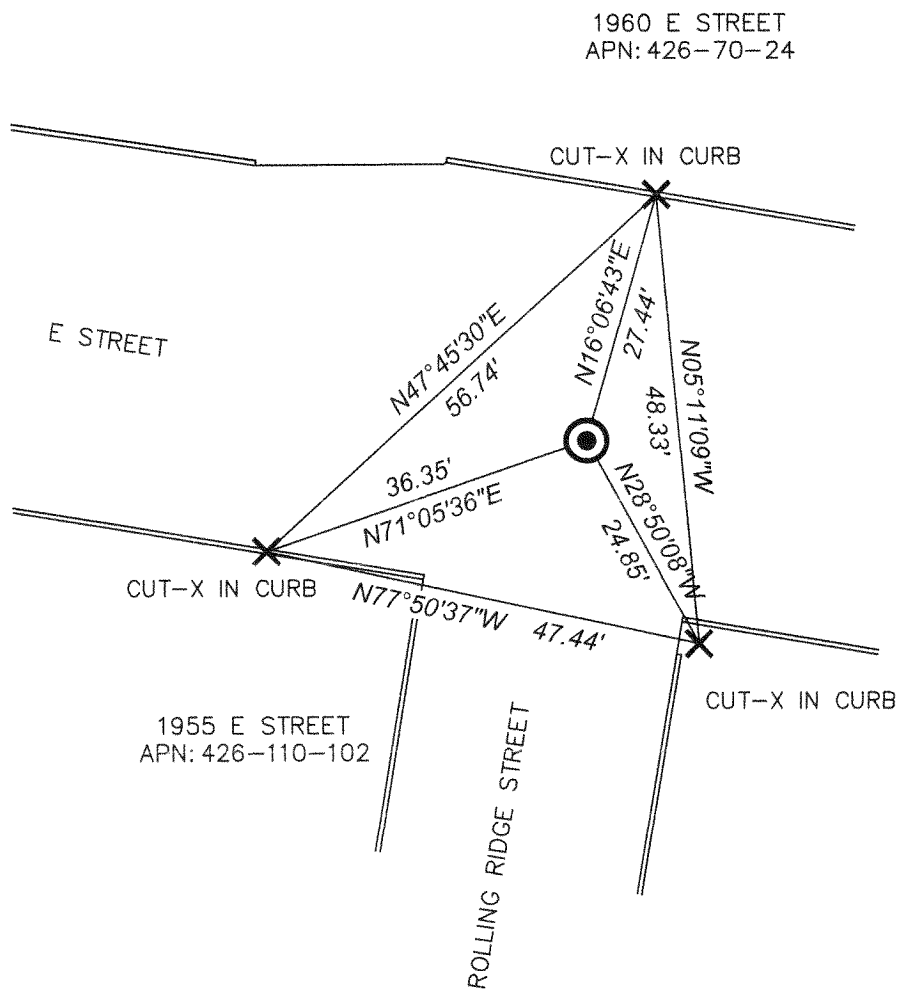


LEGEND



- ##### STREET ADDRESS
- APN ASSESSOR'S PARCEL NUMBER
- ⊙ FOUND SURVEY MONUMENT
(1/8" PIN IN DISC IN WELL)
- × CUT CROSS SET IN CURB
OR WALK AS DISPLAYED

SCALE: 1" = 20'



21-159 SHEET C-28B