

1781

1781

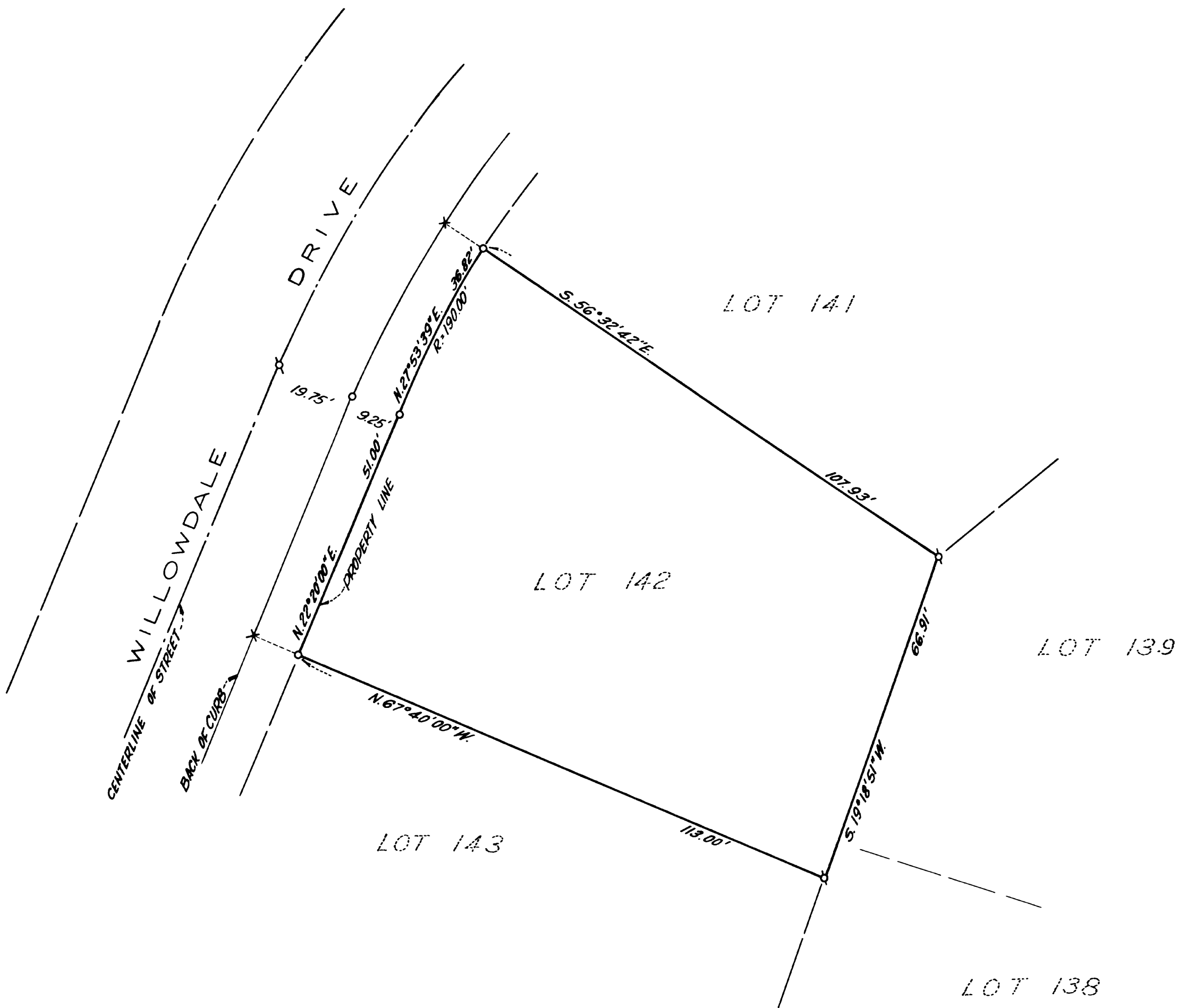
1-181

RECORD OF SURVEY
LOT 142 ST. ANDREWS VILLAGE UNIT NO. 3

EL DORADO COUNTY, CALIFORNIA

APRIL, 1964 SCALE: 1" = 20'

SPINK ENGINEERING COMPANY



LEGEND:

- Denotes 3/4" capped iron pipe monument stamped "L.S. 2651."
- Denotes "x" cut on top of concrete curb with brass tag stamped "L.S. 2651" per variance granted by the Board of Supervisors on November 4, 1963.

SURVEYOR'S CERTIFICATE

This map correctly represents a survey made by me or under my direction in conformance with the requirements of the Land Surveyor's Act at the request of El Dorado Hills West, Inc.

R.S. Stinchfield
R.S. Stinchfield, L.S. 2651

COUNTY SURVEYOR'S CERTIFICATE

This map has been examined for conformance with the requirements of the Land Surveyor's Act this 27th day of May, 1964.

Fred J. DeBERRY
County Surveyor of El Dorado County
L.S. 2403

NOTE:

This map was made for the purpose of showing the typical lot stakeout in Park Village Unit No. 3, St. Andrews Village Unit No. 3, and Governor Village Unit No. 4.

MERIDIAN NOTE:

The meridian of this survey is identical with that of the California Coordinate System, Zone II, as defined in Division 8 of the Public Resources Code of the State of California.

RECORDER'S CERTIFICATE

Filed for record this 28th day of May, 1964, at 8 Hours 21 Minutes A.M., in Book 1 of Surveys, Map No. 131, at the request of Spink Engineering Company.

JAMES W. Sweeney
County Recorder of El Dorado County
By *Debbie Sweeney*
Deputy #10971

1-181

1781