

BK 47 PG 99

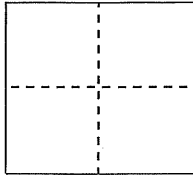
CORNER RECORD

Document Number CR 5173

City of Oakland

County of Alameda, California

Brief Legal Description City of Oakland Street Monument.



CORNER TYPE

Government Corner ☐ Control ☐
Meander ☐ Property ☐
Rancho ☐ Other ☒

Date of Survey October 10, 2012.

COORDINATES (Optional)

N. _____
E. _____
Zone _____ NAD27 ☐ NAD83 ☐
NAD83 Epoch _____
Elev. _____
Vert. Datum: NGVD29 ☐ NAVD88 ☐
Meas. Units: Metric ☐ Imperial ☐

Corner - Left as found ☒ Found and tagged ☐ Established ☐ Reestablished ☐ Rebuilt ☐

Identification and type of corner found: Evidence used to identify or procedure used to establish or reestablish the corner:

In compliance with Section 8771 of the Professional Land Surveyors' Act, this corner record is being filed to ESTABLISH the position of an existing monument PRIOR to street or highway construction.

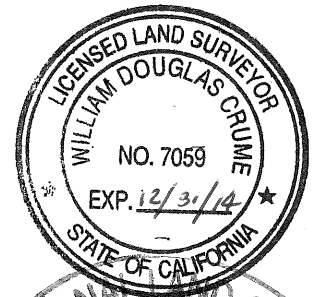
A description of the physical condition of the monument as found and as set or reset:

See sketch on back.

SURVEYOR'S STATEMENT

This Corner Record was prepared by me or under my direction in conformance with the Professional Land Surveyor's Act on February 13, 2013

Signed William Douglas Crume P.L.S. or R.C.E. No. LS 7059



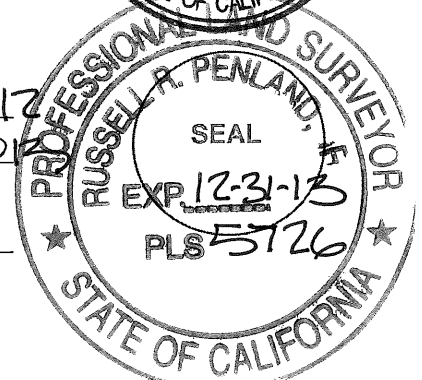
COUNTY SURVEYOR'S STATEMENT

This Corner Record was received _____
and examined and filed _____

Signed Russell A. Penland P.L.S. or R.C.E. No. 5126

Title COUNTY SURVEYOR

County Surveyor's Comment: _____



WY94J7

