

RECORD OF SURVEY

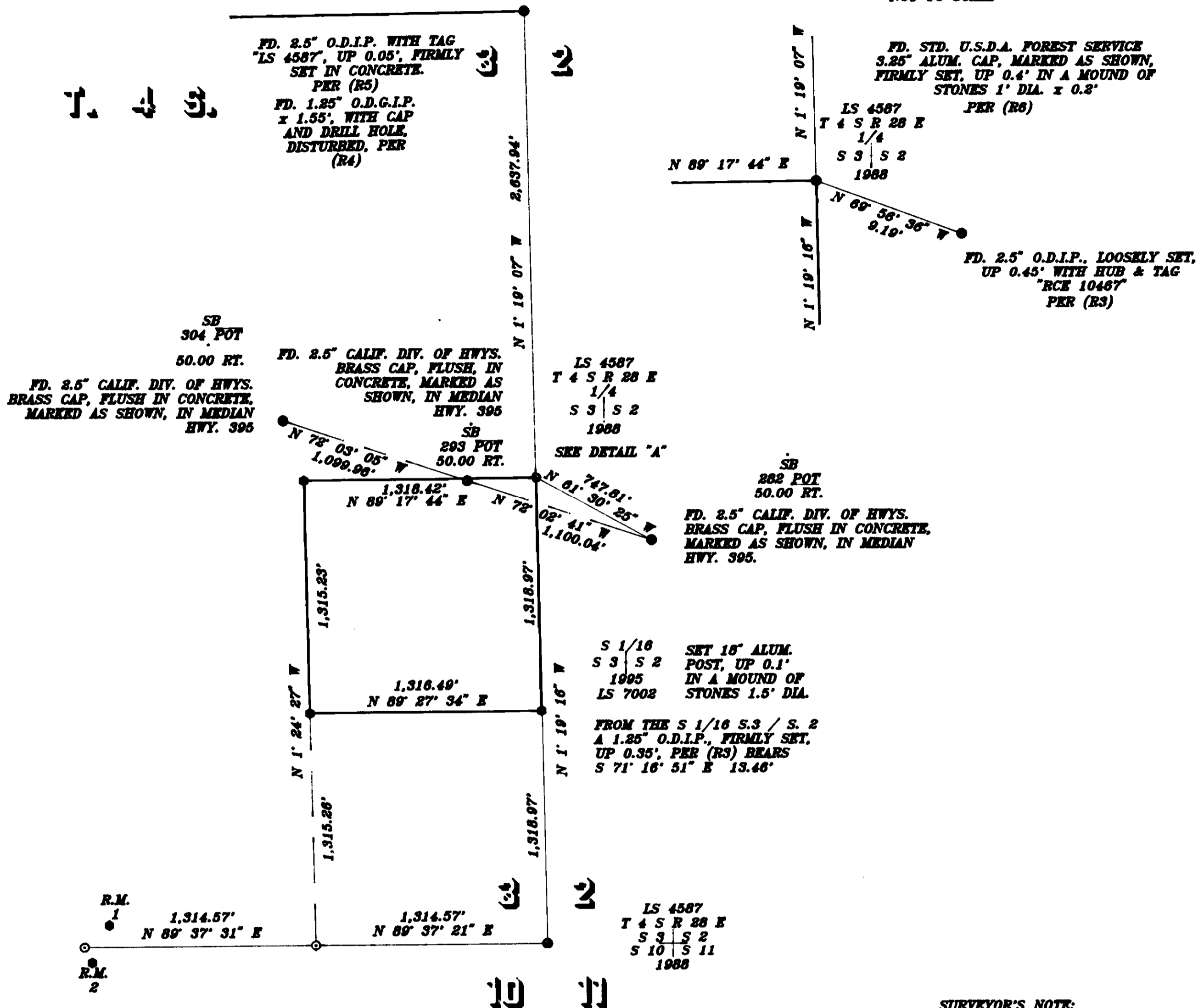
NO. 36 - 119

T. 3 S.

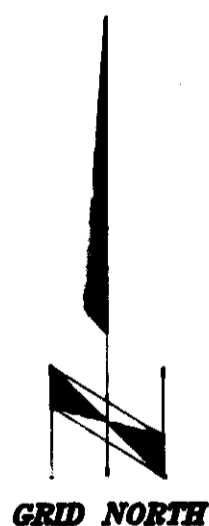
34 35

T. 4 S.

DETAIL "A"
NOT TO SCALE



SEE DETAIL "B"



GEODETIC AZ. = GRID AZ. + CONVERGENCE ANGLE
CONVERGENCE ANGLE AT C 1/4 S. 3 = + 0° 59' 47"



LEGEND

- ⊙ BASIC PROJECT CONTROL, AS NOTED
- ◆ FD. U.S.G.L.O. MONUMENT, AS NOTED
- FD. MONUMENT AS NOTED
- SET MONUMENT, 3.25" U.S.D.A. FOREST SERVICE ALUMINUM CAP ON A 2.5" x 30" ALUMINUM POST, UNLESS OTHERWISE NOTED
- ⊙ CALCULATED POSITION, NOTHING SET
- (R1) U.S.G.L.O., A. W. VON SCHMIDT, 1856
- (R2) U.S.G.L.O., KARL SIEBECKER, 1928
- (R3) RECORD OF SURVEY, MB 7/20, 2-71
- (R4) RECORD OF SURVEY 36-11, RSMB 1/7, 1-73
- (R5) RECORD OF SURVEY 36-37, RSMB 1/107-107A, 1-85
- (R6) RECORD OF SURVEY 36-54, RSMB 2/44-44F, 11-88
- (R7) RECORD OF SURVEY 36-91, RSMB 2/123, 4-92
- (R8) RECORD OF SURVEY 36-109, RSMB 3/14-14A, 11-93

SURVEYOR'S NOTE:
IN 1970 MR. GORDON HOLMES, RCE 10467 (R3) SUBDIVIDED SECTION 3 BY A METHOD NOT AUTHORIZED BY THE MANUAL OF SURVEYING INSTRUCTIONS. IN 1988 MR. DAVID LAVERTY LS 4587 (R6) REESTABLISHED THE SOUTH EAST CORNER OF SECTION 3 BY DOUBLE PROPORTION. MR. LAVERTY'S WORK APPEARS TO BE CORRECT IN BOTH PROCEDURE AND SUBSTANCE AND IS ACCEPTED AS THE BASIS OF MY SUBDIVISION OF SECTION 3.

DETAIL "B"

1/4 CORNER FOR S. 3 / S. 10
SEARCHED FOR, NOT FD. REESTABLISHED
BY SINGLE PROPORTION. THE POSITION FOR
THIS CORNER FALLS IN A DISTURBED AREA SUBJECT
TO PERIODIC INUNDATION WITH RECLAIMED WASTE WATER.
SET TWO REFERENCE MONUMENTS AS SHOWN BELOW.

