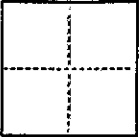


CORNER RECORD

CR 229

COUNTY OF ALAMEDA T. _____ R. _____ MERIDIAN _____ CALIFORNIA
CORNER TYPE: GOV'T. CORNER ☐ MEANDER ☐ RANCHO ☐ CONTROL ☐ OTHER ☒
CORNER IDENTIFICATION — DATE OF VISIT DEC. 4 1992



CORNER — LEFT AS FOUND ☐ FOUND AND TAGGED ☐ REESTABLISHED OBLITERATED CORNER ☐ REBUILT ☐

PHYSICAL DESCRIPTION OF CORNER FOUND; EVIDENCE AND METHOD USED TO IDENTIFY OR REESTABLISH

CORNER REESTABLISHMENT FROM THE RECORDS SHOWN IN PARCEL MAP 1205
AND TRACT MAP 5543

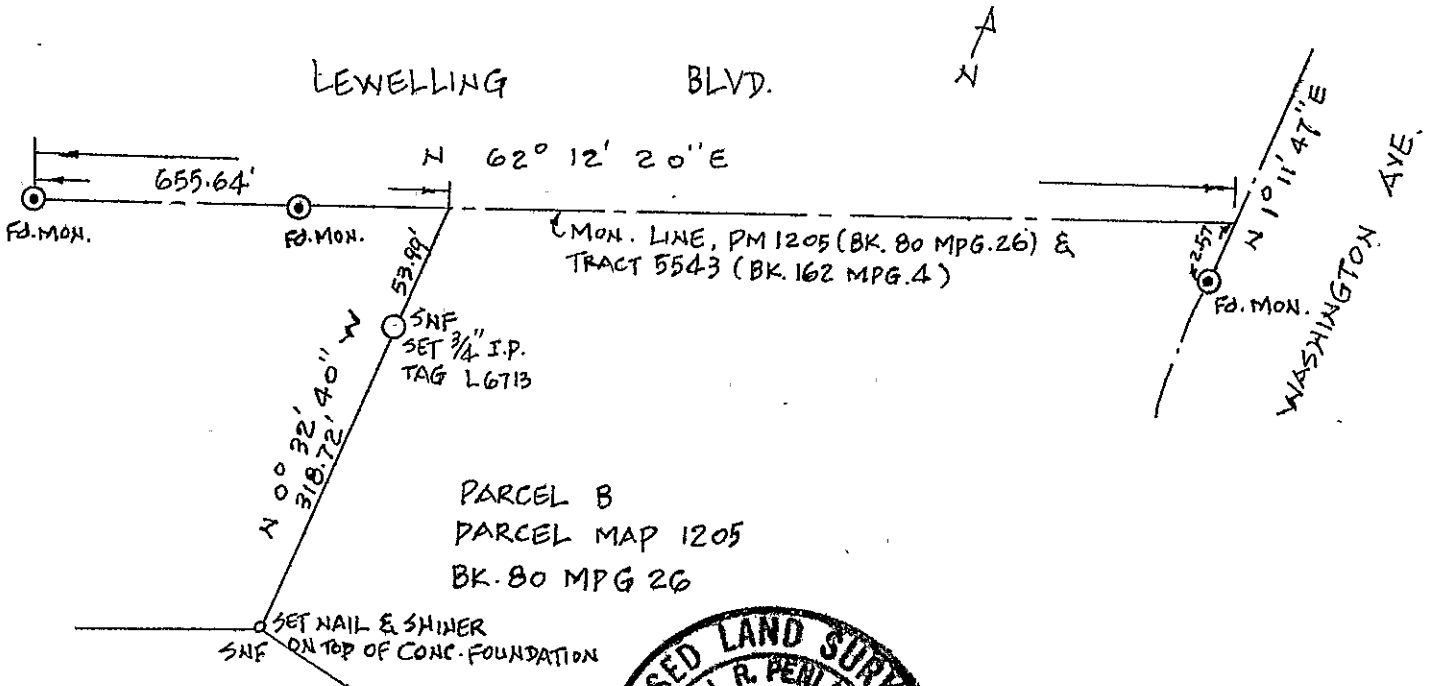
PHYSICAL DESCRIPTION OF MONUMENTS REBUILT OR PERPETUATED
STANDARD

- FOUND CITY OF SAN LEANDRO MONUMENT
- SET 3/4" IP TAG L6713
- SET NAIL & SHINER
- SNF SEARCHED FOR NOT FOUND (PER PM 1205)

CALIFORNIA COORDINATE SYSTEM ORDER: FIRST ☐ SECOND ☐ THIRD ☐
STATIONS USED: NGS (USC & GS) ☐ STATE ☐ COUNTY ☐ OTHER ☐ STATION _____ STATION _____
ZONE _____ ELEVATION _____ NORTHINGS (Y) _____ EASTINGS (X) _____

(Fold)

SKETCH: (Include reference tie or witness points, remarks and topo of area)

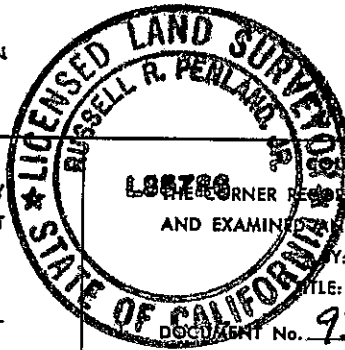
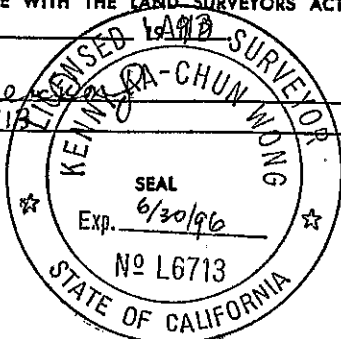


SURVEYOR'S CERTIFICATE

THIS CORNER RECORD WAS PREPARED BY ME OR UNDER MY
DIRECTION IN CONFORMANCE WITH THE LAND SURVEYORS ACT
ON JAN. 26

SIGNED: KENNETH A. CHUN

L.S. or R.C.E. No.: L6713



COUNTY SURVEYOR'S CERTIFICATE

CORNER RECORD WAS RECEIVED 4/12/93
AND EXAMINED AND FILED 4/12/93

DEPUTY COUNTY SURVEYOR

DOCUMENT No. 93-02

BK. 2 C.R. PG. 34

STATEMENT ON BACK OF SHEET

YES ☐ NO ☒