

NOTES

ALL DISTANCES AND DIMENSIONS ARE IN FEET AND DECIMALS.

THIS RECORD OF SURVEY IS BEING FILED IN COMPLIANCE WITH SECTION 8762 PARAGRAPH B 1,2,3,4,5 OF THE PROFESSIONAL LAND SURVEYORS' ACT

RECORD DATA IS SHOWN WHEN DIFFERENT THAN MEASURED

COUNTY SURVEYOR'S STATEMENT

THIS MAP HAS BEEN EXAMINED IN ACCORDANCE WITH SECTION 8766 OF THE PROFESSIONAL LAND SURVEYORS' ACT THIS 14 DAY OF OCTOBER 2021.

BY: AUGUST HANKS COUNTY SURVEYOR
PLS NO. 9274
BY: JEREMY KOENIG, DEPUTY COUNTY SURVEYOR
PLS NO. 9394



PARCEL, ADJOINER & REFERENCE DATA

A	APN: 467-40-052 DOC# 24601444
B	APN: 467-40-053 LOT 20
C	CR#3041 APN: 467-40-054 LOT 19
D	APN: 467-40-051 DOC 24418930
E	APN: 467-40-049 DOC# 21449050
F	APN: 467-40-048 LOT 9
G	"L" M 52

LEGEND

- SET 3/4" IP W/ PLASTIC PLUG "PLS 6163"
- FOUND POINT AS NOTED
- ⊙ FOUND POINT IN MONUMENT CASTING AS NOTED
- [A] SOURCE OF RECORD DATA
- x— FENCE
- — — CENTERLINE
- () RECORD DATA AND REFERENCE
- IP IRON PIPE
- BW BACK OF SIDEWALK

RECORDER'S STATEMENT

FILED THIS 19th DAY OF OCTOBER 2021, AT 8:21 AM. IN BOOK 942 OF MAPS AT PAGE 21 AT THE REQUEST OF LOUIS WADE HAMMOND.

FILE NO: 25136418 FEE: 83.00

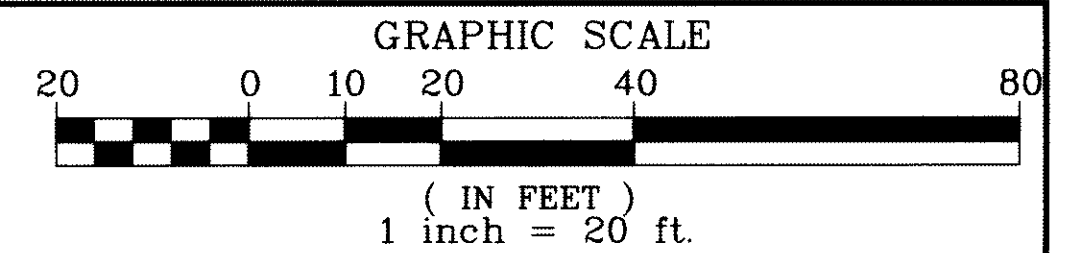
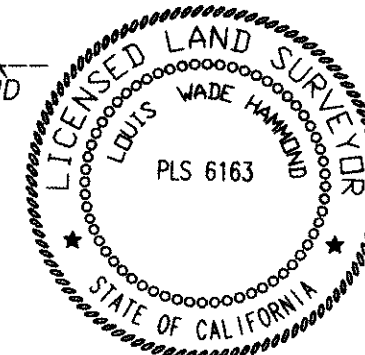
REGINA ALCOMENDRAS COUNTY RECORDER

BY: Tina Hopkins
DEPUTY

SURVEYOR'S STATEMENT

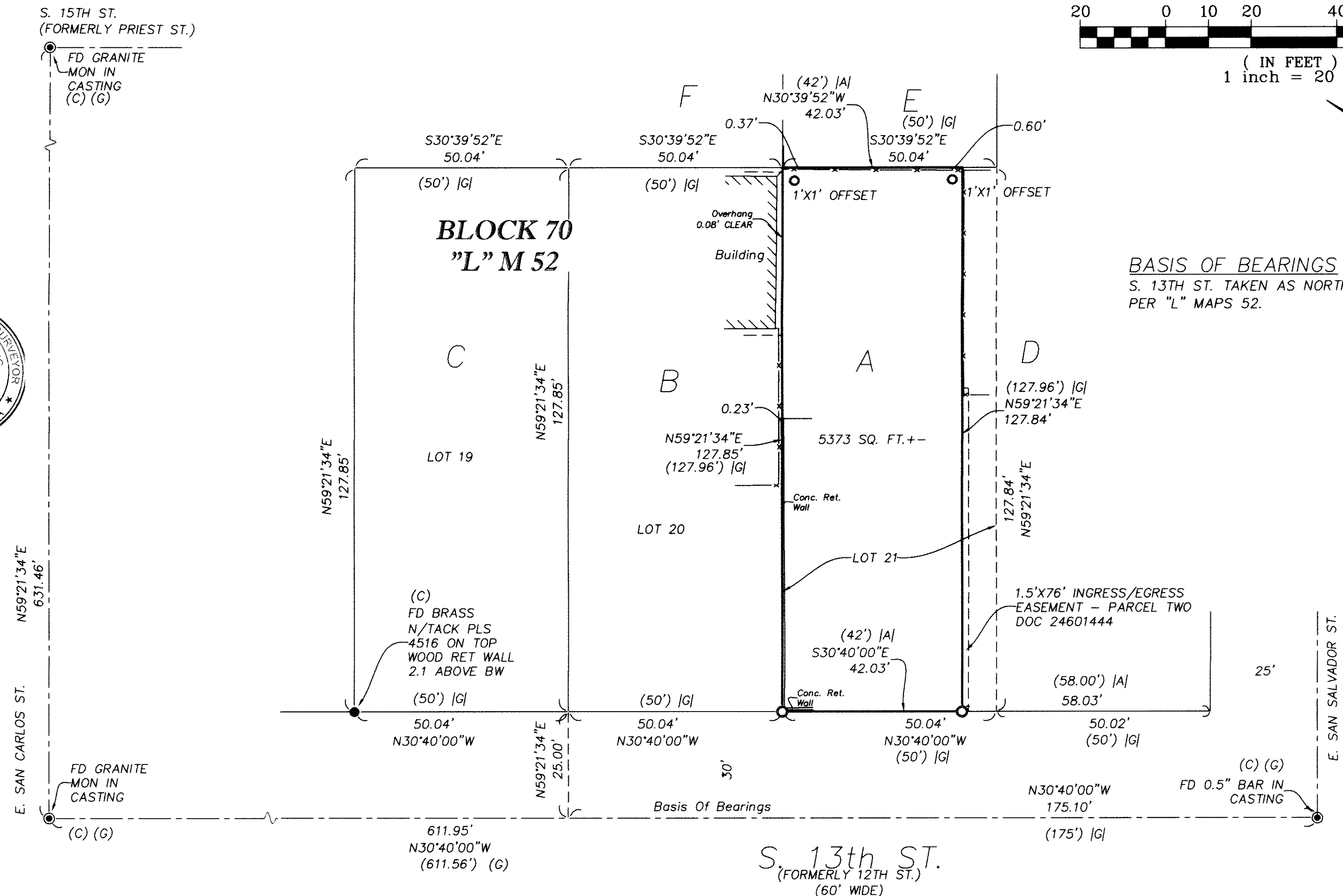
THIS MAP CORRECTLY REPRESENTS A SURVEY MADE BY ME OR UNDER MY DIRECTION IN CONFORMANCE WITH THE REQUIREMENTS OF THE PROFESSIONAL LAND SURVEYORS' ACT AT THE REQUEST OF AMMIRATO CONSTRUCTION IN OCTOBER 2020.

Louis Wade Hammond
LOUIS WADE HAMMOND
P.L.S. 6163



BASIS OF BEARINGS

S. 13TH ST. TAKEN AS NORTH 30°40'00" WEST PER "L" MAPS 52.



RECORD OF SURVEY

A PORTION OF LOT 21, BLOCK 70, "L" MAPS 52 AS DESCRIBED IN DOC# 24601444
SAN JOSE SANTA CLARA COUNTY CALIFORNIA
SCALE: 1"=20' OCTOBER 2020

Wade Hammond
Civil Engineering and Land Surveying
36660 Newark Blvd. Suite C
Newark, CA 94560 510-579-6112
wade@whlandsurveyor.com www.wadehammondpls.com
JOB: 4695
COUNTY GRID NO. 83-41-68 SHEET ONE OF ONE

25136418

942
21-21

21