

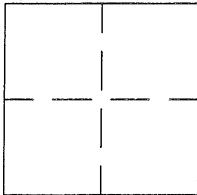
CORNER RECORD

BK 55 PG 51
Document Number CR 3677

APN No. 902 - 001 - 0001 - (Optional)

Unincorporated _____ County of ALAMEDA, California

Brief Legal Description MAY SCHOOL RD. @ DAGNINO RD.



CORNER TYPE

Government Corner ☐ Control ☐
Meander ☐ Property ☐
Rancho ☐ Other ☒
Date of Survey MARCH 31, 2009

COORDINATES (Optional)

N. 453,154.1
E. 1,639,715.1
Zone NAD27 ☒ NAD83 ☐
NAD 83 Epoch _____
Elev. _____

Corner - Left as found ☒ Found and tagged ☐ Established ☐ Reestablished ☐ Rebuilt ☐

In compliance with Section 8771 of the Professional Land Surveyors' Act, this corner record is being filed to ESTABLISH ☒ / REESTABLISH _____ the position of an existing monument PRIOR ☒ / SUBSEQUENT _____ to street or highway reconstruction. (Use this portion only when applicable.)

Identification and type of corner found: Evidence used to identify or procedure used to establish or reestablish the corner:
FOUND IRON BOLT AT THE CENTERLINE - CENTERLINE INTERSECTION
OF MAY SCHOOL RD. & DAGNINO RD.
MAY SCHOOL STATION 66+29.25

A description of the physical condition of the monument as found and as set or reset: _____

IRON BOLT FOUND IN GOOD CONDITION.

SURVEYOR'S STATEMENT

This Corner Record was prepared by me or under my direction in conformance with

the Land Surveyors' Act on AUGUST 4, 20 09.

Signed Robert A. Machado L.S. or R.C.E. Number 7380



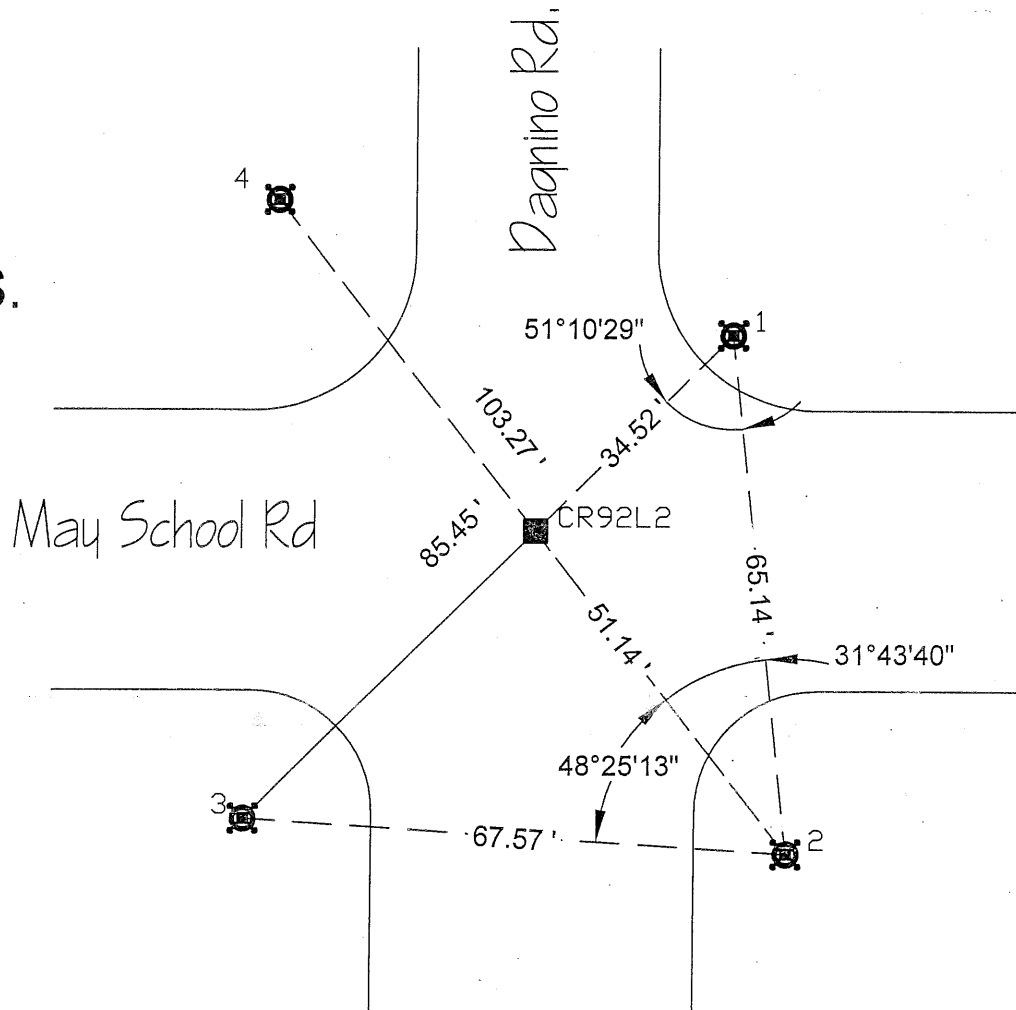
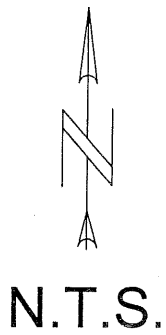
COUNTY SURVEYOR'S STATEMENT

This Corner Record was received AUGUST 4, 20 09 and examined and filed 11-14 20 13.

Signed Russell R. Penland, Jr. Title County Surveyor



County Surveyor's Comment _____



Legend

Found: I. B. Point #75



Set: $\frac{1}{2}$ " Rebar w/Plastic Cap



Credits

Lead: Brian Danforth

Assist.: Steven Sousa

Computations: Joanne Fetzer

CAD: reid

File Name: CR3677_Thursday_20090728 CR Page 2 with dxf.dwg

Reference(s)

RS 1159, Bk 19 Pg 22 (Sheet 18 of 46)

Alameda County LL Notes: LL-765

Job#: R23343

Alameda County Monument Id System (PTa...) **CR92L2**