

GRADING & DRAINAGE LEGEND		
GRADING/DRAINAGE	LINETYPE/SYMBOL	REFERENCE
GRADE		SEE PLANS
SPOT ELEVATION		SEE PLANS
STORM DRAIN		SEE PLANS
HEADWALL (HW) / FLARED END SECTION (FES)		PROPOSED BY OTHERS
DROP INLET (GRATE)		NOT APPLICABLE
DROP INLET (GRATE AND HOOD)		DETAILS 4 & 5, SHEET C04.3
JUNCTION BOX (JB) / OCS		NOT APPLICABLE
CATCH BASIN (SINGLE WING)		NOT APPLICABLE
CATCH BASIN (DOUBLE WING)		NOT APPLICABLE
LANDSCAPE DRAIN		DETAILS 1 & 2, SHEET C04.3
STORM STRUCTURE NUMBER		SEE PLANS

### PASCO COUNTY DRAINAGE NOTES

- SHOULD ANY NOTICEABLE SOIL SLUMPING OR SINKHOLE FORMATION BECOME EVIDENT, THE APPLICANT/DEVELOPER SHALL IMMEDIATELY NOTIFY THE COUNTY, TAMPA BAY WATER, AND THE SOUTHWEST FLORIDA WATER MANAGEMENT DISTRICT AND ADOPT ONE (1) OR MORE OF THE FOLLOWING PROCEDURES AS DETERMINED TO BE APPROPRIATE BY THE COUNTY AND SWFWMD:
- IF THE SLUMPING OR SINKHOLE FORMATION BECOMES EVIDENT BEFORE OR DURING CONSTRUCTION ACTIVITIES, STOP ALL WORK (EXCEPT FOR MITIGATION ACTIVITIES) IN THE AFFECTED AREA AND REMAIN STOPPED UNTIL THE COUNTY AND SWFWMD APPROVE RESUMING CONSTRUCTION ACTIVITIES.
  - TAKE IMMEDIATE MEASURES TO ENSURE NO SURFACE WATER DRAINS INTO THE AFFECTED AREAS.
  - VISUALLY INSPECT THE AFFECTED AREA.
  - EXCAVATE AND BACKFILL OR GROUT, AS REQUIRED, TO FILL THE AFFECTED AREA AND PREVENT FURTHER SUBSIDENCE.
  - USE SOIL REINFORCEMENT MATERIALS IN THE BACKFILLING OPERATION WHEN APPROPRIATE.
  - IF THE AFFECTED AREA IS IN THE VICINITY OF A WATER-RETENTION AREA, MAINTAIN A MINIMUM DISTANCE OF TWO (2) FEET FROM THE BOTTOM OF THE RETENTION POND TO THE SURFACE OF THE LIMESTONE OR KARST CONNECTION.
  - IF THE AFFECTED AREA IS IN THE VICINITY OF A WATER-RETENTION AREA AND THE ABOVE METHODS DO NOT STABILIZE THE COLLAPSE, RELOCATE THE RETENTION AREA.

### STORMWATER MANAGEMENT NOTES

- PRIOR TO THE START OF CLEARING & GRUBBING, OR ANY SOIL DISTURBANCE, CONTRACTOR SHALL CONTACT PASCO COUNTY STORMWATER MANAGEMENT AT (727) 834-3611 FOR SOIL EROSION AND SEDIMENT CONTROL PRE-INSPECTION MEETING.
- THE CONTRACTOR SHALL PROVIDE A DEWATERING PLAN, IF APPLICABLE, TO PASCO COUNTY ENGINEERING INSPECTIONS DEPARTMENT AT (727) 834-3670 FOR REVIEW PRIOR TO THE EROSION CONTROL MEASURES PRE-INSPECTION MEETING.

### GRADING & DRAINAGE NOTES

- SEE LANDSCAPE PLAN FOR REQUIRED TREES AND GROUND COVER.
- SLOPE OF SURFACE GRADE SHALL BE A MINIMUM OF 1.00%.
- MAXIMUM CUT OF FILL SLOPES IS 2H:1V.
- THE CONTRACTOR SHALL PROVIDE CLEAN, SUITABLE MATERIAL FOR REQUIRED FILL. SHOULD A SUFFICIENT QUANTITY OF SUITABLE MATERIAL NOT BE AVAILABLE FROM THE REQUIRED EXCAVATION ON THE SITE.
- FILL SHALL BE PLACED IN MAXIMUM 12" THIN, HORIZONTAL LOOSE LIFTS WHEN HEAVY, SELF-PROPELLED COMPACTION EQUIPMENT IS USED. FILL SHALL BE PLACED IN 4 TO 6 INCH THIN, HORIZONTAL LOOSE LIFTS WHEN HAND-GUIDED EQUIPMENT (i.e. JUMPING JACK OR PLATE COMPACTOR) IS USED.
- FILL SHALL BE COMPACTED TO AT LEAST 98 PERCENT OF THE MODIFIED PROCTOR TEST (ASTM D 1557) WITHIN 1 FOOT OF FOOTING BOTTOM AND FINISHED PAVEMENT SUBGRADE. FILL SHALL BE COMPACTED TO AT LEAST 95 PERCENT OF THE MODIFIED PROCTOR TEST ABOVE FOUNDATIONS, BELOW FLOOR SLABS, AND MORE THAN 1 FOOT BELOW THE FOOTING BOTTOM AND FINISHED PAVEMENT SUBGRADE.
- COMPACTION MUST BE CERTIFIED BY A FLORIDA REGISTERED PROFESSIONAL SOILS ENGINEER PRIOR TO THE INSTALLATION OF PAVEMENTS, CURBS, SIDEWALKS OR FOOTINGS OF ANY TYPE.
- DETENTION POND, DETENTION OUTLET STRUCTURES AND TEMPORARY SEDIMENT POND FEATURES ARE TO BE FULLY CONSTRUCTED AND OPERATIONAL PRIOR TO ANY OTHER CONSTRUCTION OR GRADING ON THE SITE AND MAINTAINED UNTIL PERMANENT GROUND COVER IS ESTABLISHED.
- JURISDICTIONAL LAND DISTURBANCE PERMIT MUST BE DISPLAYED ON SITE AT ALL TIMES DURING CONSTRUCTION AND IN PLAIN VIEW FROM A PUBLIC ROAD OR STREET.
- SEE SHEET C01.1 FOR GENERAL NOTES.

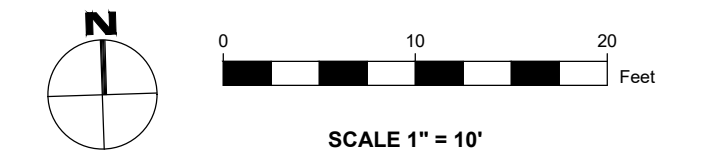
### HYDROLOGY STATEMENT

IN THE EXISTING CONDITION, THE SUBJECT PARCEL IS 100% PERVIOUS GRASSLAND. THE OVERALL SELLER WILL BE PROVIDING A STORMWATER DETENTION STRUCTURE S59 AND COMPLETING MASS GRADING ACROSS THE ENTIRE DEVELOPMENT. THE HYDROLOGIC SOIL GROUP AT THIS SITE IS A2, PER THE USGS WEB SOIL SURVEY. IN THE PROPOSED CONDITION, THE STORM WATER FROM THE SITE WILL DRAIN TO MULTIPLE FDOT TYPE 9 CURB INLETS ON THE SITE. THE STORMWATER WILL BE CONVEYED THROUGH A SERIES OF HDPE PIPES, EVENTUALLY OUTFALLING TO EXISTING STRUCTURE S59, WHICH WILL BE PROVIDED BY BOHLER ENGINEERING. EXISTING PIPE PS59 HAS BEEN MODELED AS RUNNING FULL AND ALL PROPOSED INLETS ON THE SITE HAVE BEEN MODELED IN THE HALF CLOGGED CONDITION.

CONTRACTOR SHALL PROTECT ALL ITEMS OUTSIDE LIMITS OF CONSTRUCTION UNLESS OTHERWISE NOTED IN THE CONSTRUCTION PLANS OR SPECIFICATIONS.

CONTRACTOR SHALL FIELD VERIFY ALL EXISTING UTILITIES (LOCATIONS AND ELEVATIONS) PRIOR TO STARTING CONSTRUCTION AND ALERT ENGINEER TO ANY DISCREPANCIES IMMEDIATELY.

24-HOUR CONTACT:  
JOE CELENTO  
(912) 272-4811



PANDA EXPRESS, INC.  
1683 WALNUT GROVE AVE.  
ROSEMEAD, CALIFORNIA 91770  
TELEPHONE: 626.799.9898  
FACSIMILE: 626.372.8268

All ideas, designs, arrangement and plans indicated or represented by this drawing are the property of Panda Express Inc. and were created for use on this specific project. None of these ideas, designs, arrangements or plans may be used by or disclosed to any person, firm, or corporation without the written permission of Panda Express Inc.

### REVISIONS:

C1	1ST COUNTY COMMENTS	04/05/2021
C2	2ND COUNTY COMMENTS	06/04/2021

### ISSUE DATE:

ALT. STANDARDS	12/17/2020
PRELIMINARY SITE PLAN	01/12/2021
COUNTY COMMENTS	04/05/2021
ISSUE FOR BID	06/04/2021

DRAWN BY: INGENIUM

PANDA PROJECT #: D8135  
PANDA STORE #:  
ARCH PROJECT #:



BUILDING AREA  
GRADING DETAIL

C05.1

TRUE WARM & WELCOME 2300