

TRACT 2098

LIVERMORE, ALAMEDA COUNTY, CALIFORNIA

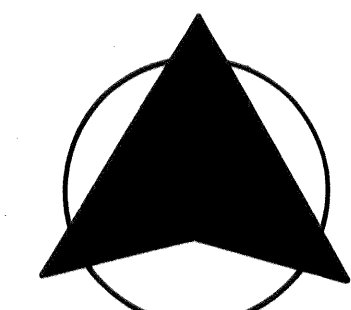
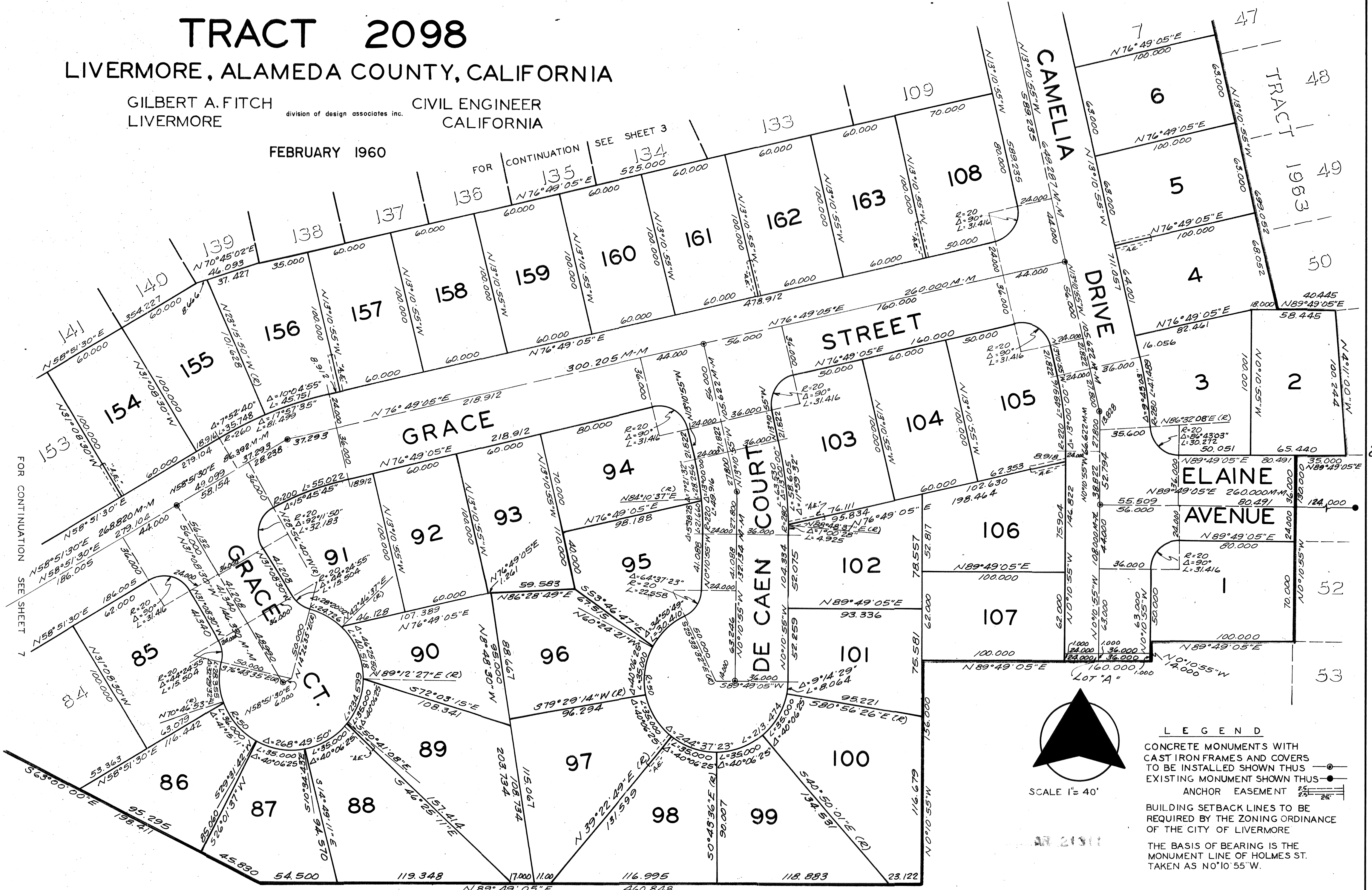
GILBERT A. FITCH
LIVERMORE

division of design associates inc.

CIVIL ENGINEER
CALIFORNIA

FEBRUARY 1960

FOR CONTINUATION SEE SHEET 3
134 525.000
135
136



- LEGEND**
- CONCRETE MONUMENTS WITH CAST IRON FRAMES AND COVERS TO BE INSTALLED SHOWN THUS —●—
 - EXISTING MONUMENT SHOWN THUS —●—
 - ANCHOR EASEMENT ———
 - BUILDING SETBACK LINES TO BE REQUIRED BY THE ZONING ORDINANCE OF THE CITY OF LIVERMORE
 - THE BASIS OF BEARING IS THE MONUMENT LINE OF HOLMES ST. TAKEN AS N 0° 10' 55\"/>