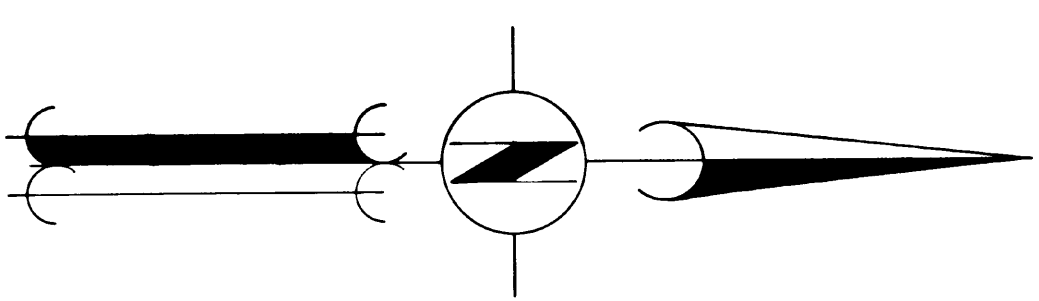
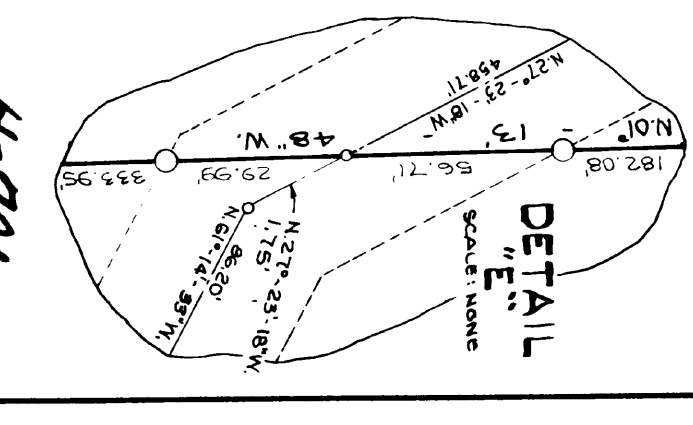
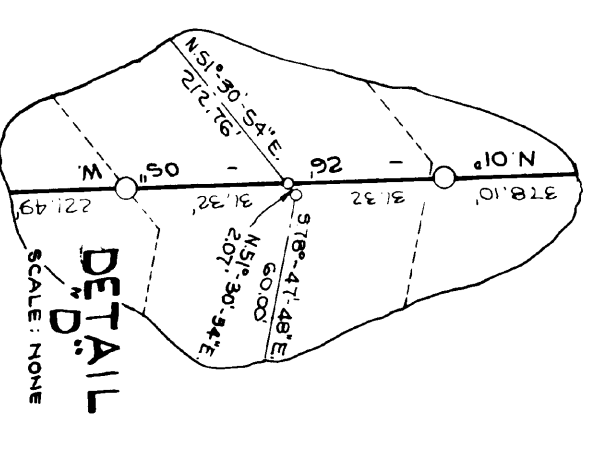
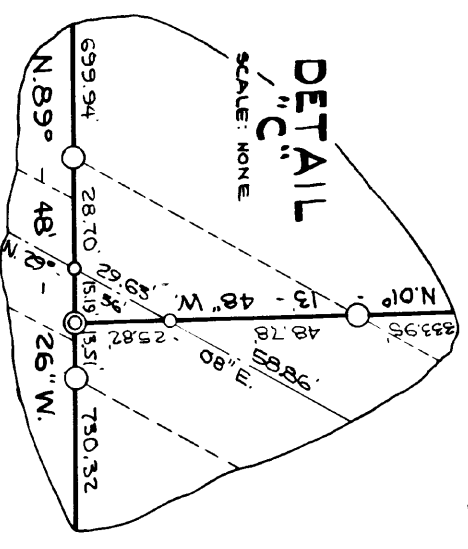
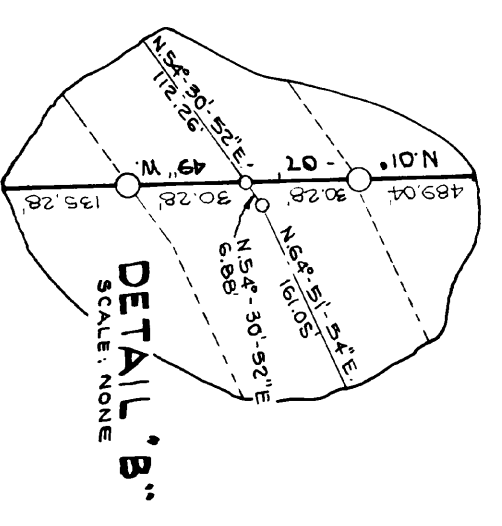
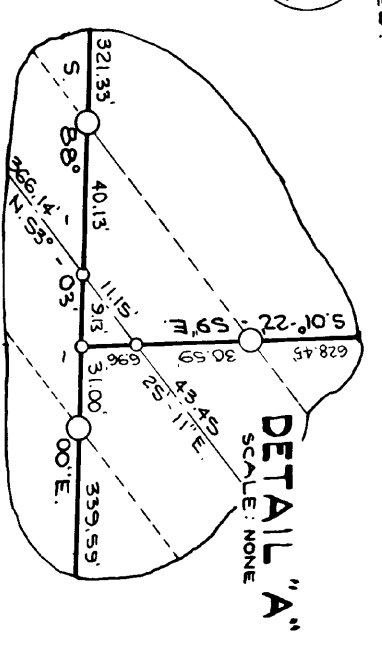


RECORD OF SURVEY
OF
**THE N. 1/2
OF SECTION 23,
T. 13 N., R. 11 E., M. D. M.**
COUNTY OF EL DORADO
STATE OF CALIFORNIA
DECEMBER, 1974 - SCALE: 1" = 200'
JOHN P. SANDERS - LSN 9 3012
SHEET 2 OF 2 SHEETS

BASIS OF BEARINGS:
THE MERIDIAN OF THIS SURVEY IS TRUE NORTH
AND WAS DETERMINED BY SOLAR OBSERVATIONS

- LEGEND:**
- COMPUTED POINT, NOTHING FOUND OR SET
 - FOUND MONUMENTS AS DESCRIBED OR SHOWN
 - ◎ SET 1/2" C.I.P. MONUMENTS STAMPED "LS 3012-1974" OR AS SHOWN
 - SET 3/4" C.I.P. MONUMENTS STAMPED "LS 3012-1974"
 - FOUND CONCRETE MONUMENT AS DESCRIBED



4-70A

4-70A