

LEGEND

- SET 5/8" RB & CAP, "LS 8356" UNLESS OTHERWISE NOTED
- ⊙ FD MAG & WASHER "LS 4587" IN LIEU OF MONUMENT SET PER R
- FD RB & CAP "LS 4587" PER R3
- FD 5/8" RB & CAP "LS 4587" PER R UNLESS OTHERWISE NOTED
- ▲ MAG & SHINER CONTROL POINT (NOT USED FOR BOUNDARY)
- B.O.B. BASIS OF BEARINGS
- CF CALCULATED FROM
- COR. CORNER
- M MEASURED
- RAD RADIAL BEARING
- RB REBAR

RECORD INFORMATION

R TMB 10/106
R1 CP 2/78
R2 MB 9/62
R3 TMB 10/58

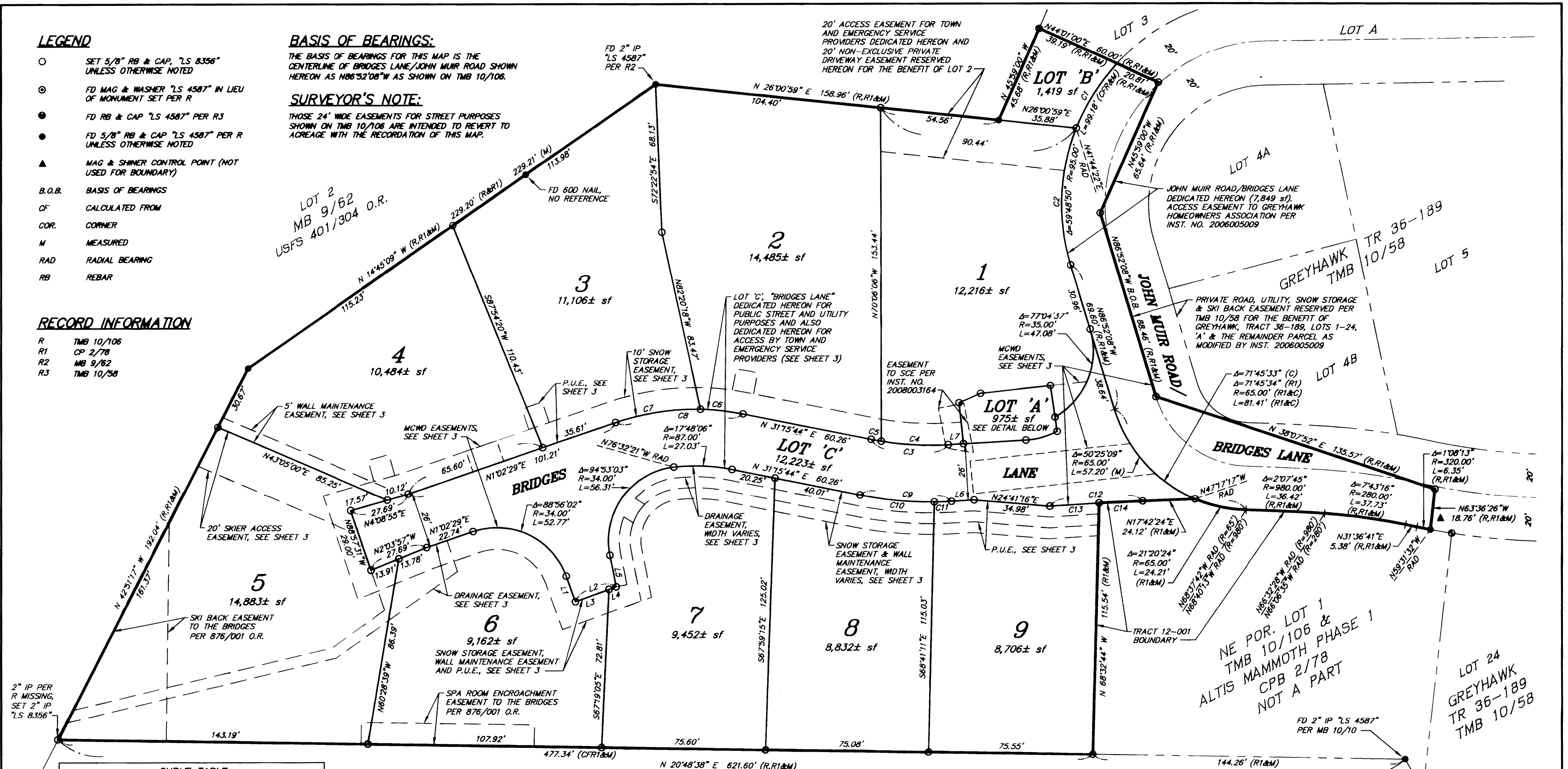
BASIS OF BEARINGS:

THE BASIS OF BEARINGS FOR THIS MAP IS THE CENTERLINE OF BRIDGES LANE/JOHN MUIR ROAD SHOWN HEREON AS N86°32'08"W AS SHOWN ON TMB 10/106.

SURVEYOR'S NOTE:

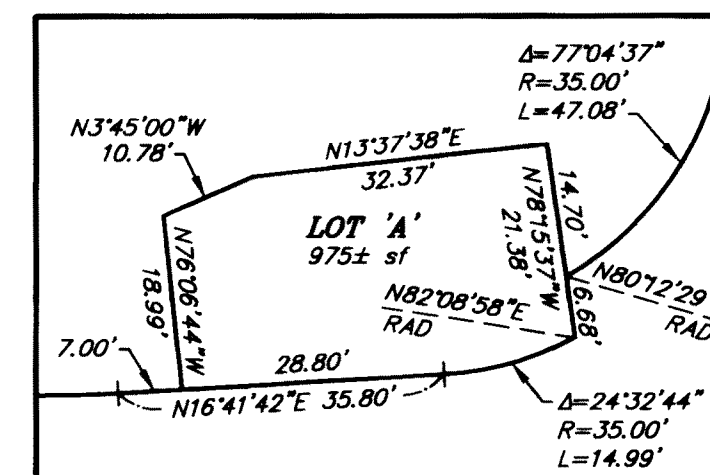
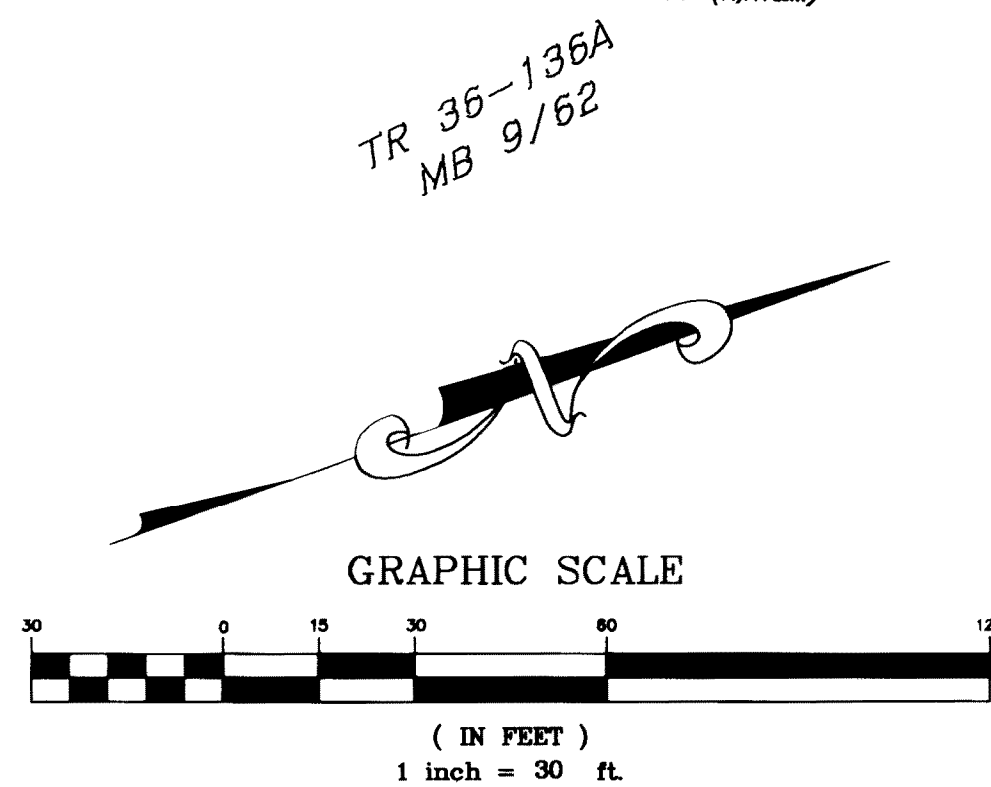
THOSE 24' WIDE EASEMENTS FOR STREET PURPOSES SHOWN ON TMB 10/106 ARE INTENDED TO REVERT TO ACREAGE WITH THE RECORDATION OF THIS MAP.

user: Administrator <cs30_impertal> | | THASERV\Vault\JOBS\01.0342.27\ACAD\Drawings\342.27_Altis-FM.dwg Mar 12, 2013, 4:15pm



CURVE TABLE				
CURVE	DELTA	LENGTH	RADIUS	REFERENCE
C1	21°12'20"	35.16'	95.00'	(M)
C2	38°36'30"	64.02'	95.00'	(M)
C3	14°34'02"	35.59'	140.00'	(M)
C4	12°38'05"	30.87'	140.00'	(M)
C5	1°55'56"	4.72'	140.00'	(M)
C6	10°03'01"	19.82'	113.00'	(M)
C7	20°10'14"	39.78'	113.00'	(M)
C8	30°13'15"	59.60'	113.00'	(M)
C9	14°34'02"	42.20'	166.00'	(M)
C10	11°50'11"	34.29'	166.00'	(M)
C11	2°43'51"	7.91'	166.00'	(M)
C12	1°47'07"	42.73'	1371.50'	(M)
C13	0°56'55"	22.70'	1371.50'	(M)
C14	0°50'12"	20.03'	1371.50'	(R1&M)

LINE TABLE		
LINE	BEARING	LENGTH
L1	N89°58'31"E	12.45'
L2	N0°01'29"W	20.00'
L3	N0°01'29"W	16.50'
L4	N0°01'29"W	3.50'
L5	N81°25'25"W	14.78'
L6	N16°41'42"E	10.43'
L7	N16°41'42"E	7.00'



LOT 'A' DETAIL
NTS

ALTIS AT MAMMOTH TRACT 12-001

IN THE TOWN OF MAMMOTH LAKES, MONO COUNTY, CALIFORNIA

BEING A RESUBDIVISION OF LOT 1, TRACT NO. 36-249 ALTIS MAMMOTH, TMB 10/106 EXCEPT THE NE POR. THEREOF AND ALSO EXCEPT ALTIS MAMMOTH PHASE 1 PER CPB 2/78



GROSS AREA: 2.80± ACRES
NET AREA: 2.62± ACRES

SHEET 2 OF 4