

BK 29 Pg 27

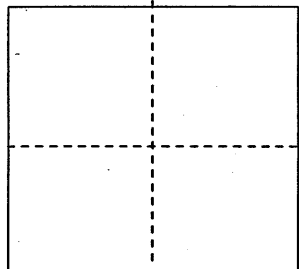
# CORNER RECORD

Document Number **CR3248**

City of Berkeley

County of Alameda, California

Brief Legal Description Monument B0278



## CORNER TYPE

Government Corner ☐ Control ☐

Meander ☐ Property ☐

Rancho ☐ Other ☒

Date of Survey 2/12/08

## COORDINATES (Optional)

N. \_\_\_\_\_

E. \_\_\_\_\_

Zone \_\_\_\_\_ NAD27 ☐ NAD83 ☐

NAD83 Epoch \_\_\_\_\_

Elev. \_\_\_\_\_

Vert. Datum: NGVD29 ☐ NAVD88 ☐

Meas. Units: Metric ☐ Imperial ☐

**Corner -** Left as found ☒ Found and tagged ☐ Established ☐ Reestablished ☐ Rebuilt ☐

Identification and type of corner found: Evidence used to identify or procedure used to establish or reestablish the corner:

See sketch on attached drawing

A description of the physical condition of the monument as found and as set or reset: \_\_\_\_\_

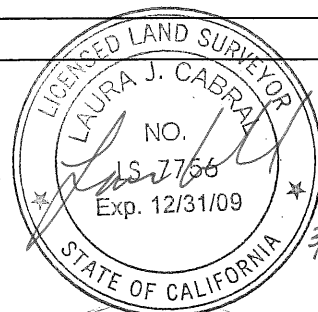
See sketch on attached drawing

## SURVEYOR'S STATEMENT

This Corner Record was prepared by me or under my direction in conformance with

The Land Surveyor's Act on FEB 14 2008

Signed Laura J. Cabral P.L.S. or R.C.E. No. 7756



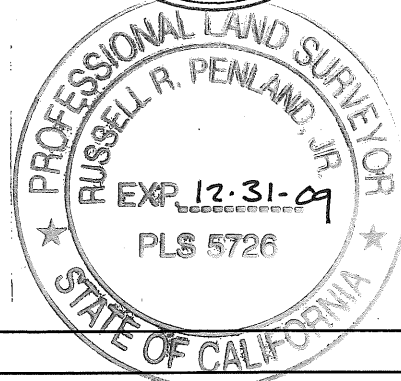
## COUNTY SURVEYOR'S STATEMENT

This Corner Record was received 2-15-08

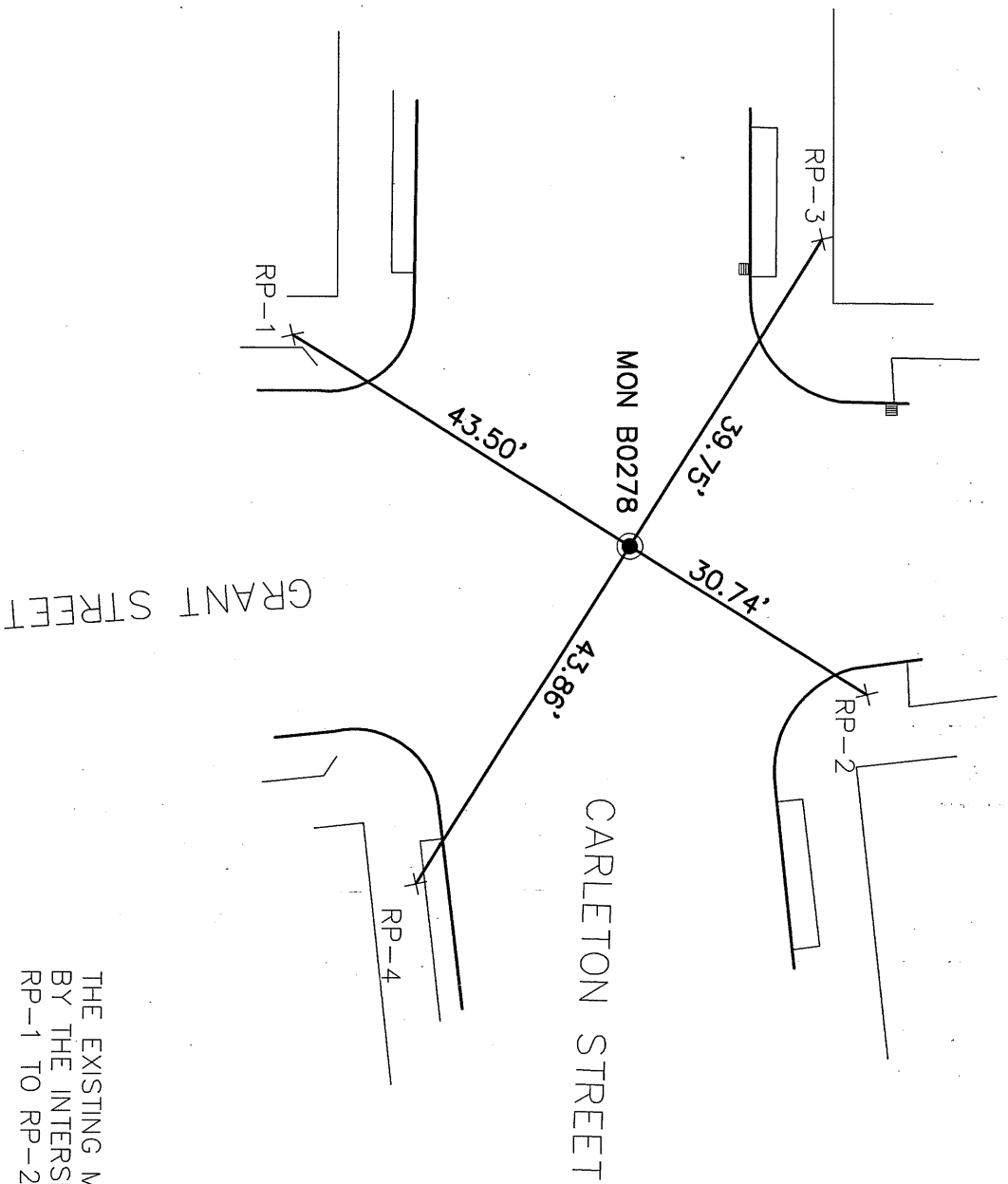
And examined and filed 4-15-08

Signed Russell R. Penland Jr. P.L.S. or R.C.E. No. 5726

Title COUNTY SURVEYOR



County Surveyor's Comment \_\_\_\_\_



GRAPHIC SCALE



1 inch = 20 ft.

THE EXISTING MONUMENT AS SHOWN IS REFERENCED BY THE INTERSECTION OF STRAIGHT LINES BETWEEN RP-1 TO RP-2 AND RP-3 TO RP-4.

- FOUND 5/8" BRASS PIN SET IN CONCRETE IN MONUMENT WELL
- X REFERENCE POINT CUT CROSS IN CONCRETE



**SANDIS**

CIVIL ENGINEERS  
SURVEYORS  
PLANNERS

605 Castro Street | Mountain View, CA 94041 | P. 650.969.6500 | F. 650.969.6472 | www.sandis.net

MOUNTAIN VIEW

ROSEVILLE

OAKLAND

DATE: 2/13/08

SCALE: 1"=20'

DRAWN BY: PGD

APPROVED BY: LJC

DRAWING NO.: 208017

**GRANT STREET AND CARLETON STREET**

**CORNER RECORD**

**BERKELEY**

**CALIFORNIA**

SHEET

**1**

OF 1 SHEETS

208017