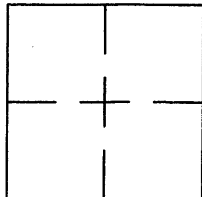


CORNER RECORD

BK 45 Pg 39

Document Number CR 4983

City of BERKELEY County of ALAMEDA, California
 Brief Legal Description CITY OF BERKELEY MONUMENT "B0826"



CORNER TYPE

Government Corner ☐ Control ☒
 Meander ☐ Property ☐
 Rancho ☐ Other ☐
 Date of Survey JULY 8, 2010

COORDINATES (Optional)

N. _____
 E. _____
 Zone _____ NAD27 ☐ NAD83 ☐
 NAD83 EPOCH _____
 Elev. _____
 VERT. DATUM: NGVD29 ☐ NADV88 ☐ BERKELEY ☐
 MEAS. UNITS: METRIC ☐ U.S. SURVEY FEET ☒

Corner - Left as found ☒ Found and tagged ☐ Established ☐ Reestablished ☐ Rebuilt ☐

Identification and type of corner found: Evidence used to identify or procedure used to establish or reestablish the corner:
 MONUMENT REFERENCE OF CITY OF BERKELEY MONUMENT "B0826" LOCATED ON THE EASTERLY SIDE OF
 THE INTERSECTION OF ASHBY AVENUE AND TELEGRAPH AVENUE, CITY OF BERKELEY, CA.

A description of the physical condition of the monument as found and as set or reset: _____
 FOUND EXISTING 1/4 INCH DIAMETER BRASS PIN IN CONCRETE SET WITHIN A STANDARD CITY OF
 BERKELEY WELL MONUMENT CASING.

SURVEYOR'S STATEMENT

This Corner Record was prepared by me or under my direction in conformance with
 the Land Surveyors' Act on APRIL 27, 2012.

Signed [Signature] L.S. or R.C.E. Number R.C.E. 23818



Expiration Date: _____

COUNTY SURVEYOR'S STATEMENT

This Corner Record was received 5-18 2012 and examined
 and filed 6-11-2012.

Signed [Signature] Title County Surveyor

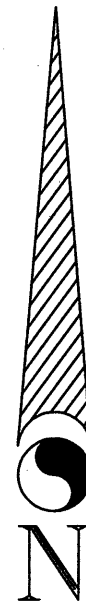
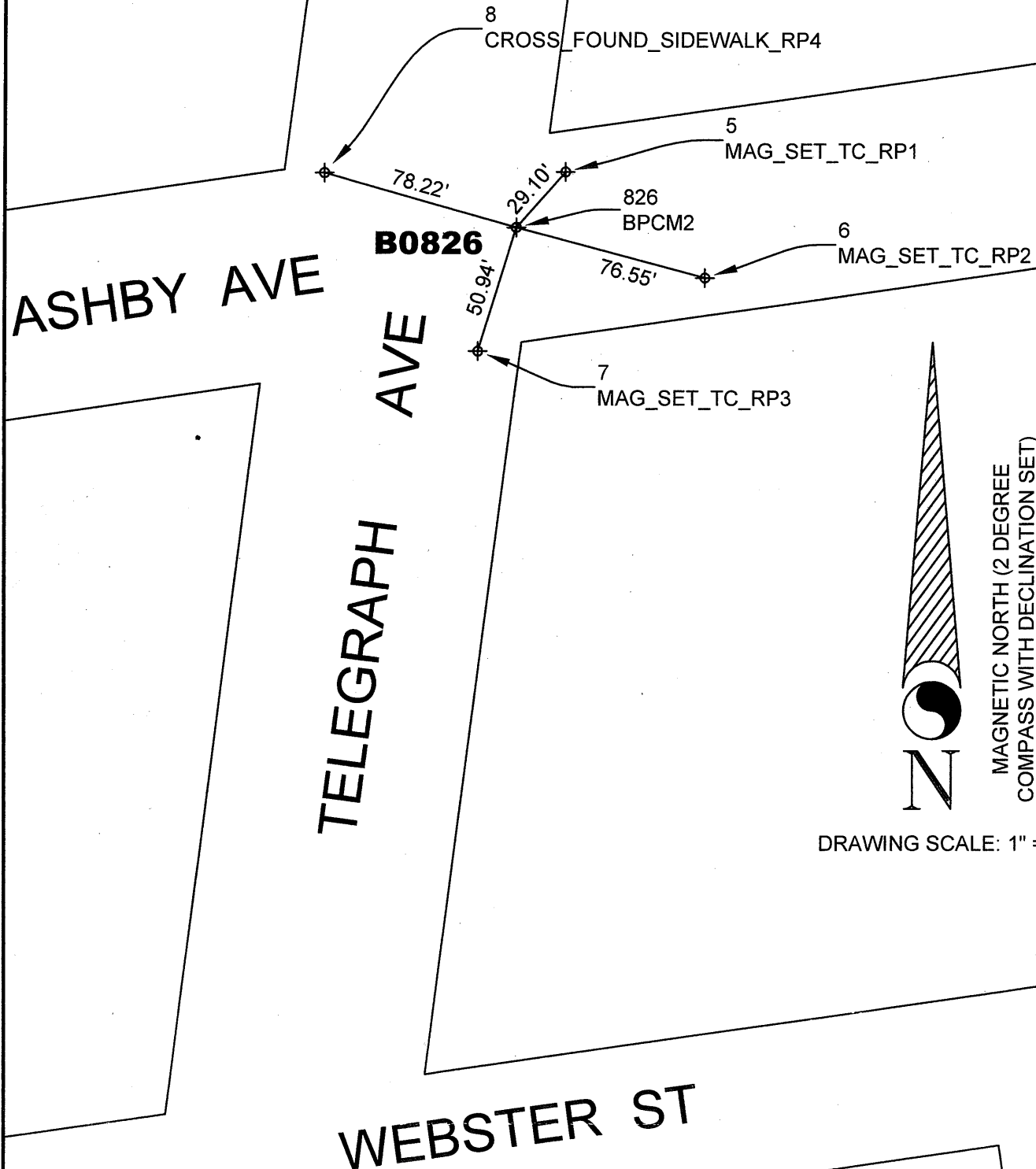


Expiration Date: _____

County Surveyor's Comment _____

AD18L5

NOTE:
RIGHT-OF-WAY LINES SHOWN
HEREON ARE APPROXIMATE
AND NOT INTENDED TO
REPRESENT THE ACTUAL
LOCATION OR WIDTH OF SAID
RIGHTS-OF-WAY.



MAGNETIC NORTH (2 DEGREE
COMPASS WITH DECLINATION SET)

DRAWING SCALE: 1" = 60'