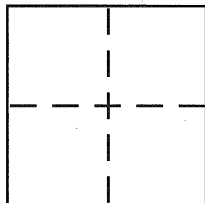


**CORNER RECORD**Document Number CR 5872City of UNINCORPORATED CASTRO VALLEYCounty of ALAMEDA, CaliforniaBrief Legal Description POST MONUMENT PRESERVATION SURVEY**CORNER TYPE**

Government Corner ☐ Control ☒  
 Meander ☐ Property ☐  
 Rancho ☐ Other ☐  
 Date of Survey SEPT 18, 2013

**COORDINATES (Optional)**

N. \_\_\_\_\_  
 E. \_\_\_\_\_  
 Zone \_\_\_\_\_ NAD27 ☐ NAD83 ☐  
 NAD83 Epoch \_\_\_\_\_  
 Elev. \_\_\_\_\_  
 Vert. Datum: NGVD29 ☐ NAVD88 ☐  
 Meas. Units: Metric ☐ Imperial ☐

Corner – Left as found ☐ Found and tagged ☐ Established ☒ Reestablished ☐ Rebuilt ☐

Identification and type of corner found: Evidence used to identify or procedure used to establish or reestablish the corner:

IN COMPLIANCE WITH SECTION 8771 OF THE PROFESSIONAL LAND SURVEYORS  
ACT, THIS CORNER RECORD IS BEING FILED TO ESTABLISH THE POSITION OF  
AN EXISTING MONUMENT SUBSEQUENT TO STREET OR HIGHWAY  
RECONSTRUCTION.

A description of the physical condition of the monument as found and as set or reset: \_\_\_\_\_

SEE SKETCH

**SURVEYOR'S STATEMENT**

This Corner Record was prepared by me or under my direction in conformance with  
 the Land Surveyor's Act on OCTOBER 9 2013

Signed Charles N. Capp P.L.S. or R.C.E. No. L6925

**COUNTY SURVEYOR'S STATEMENT**

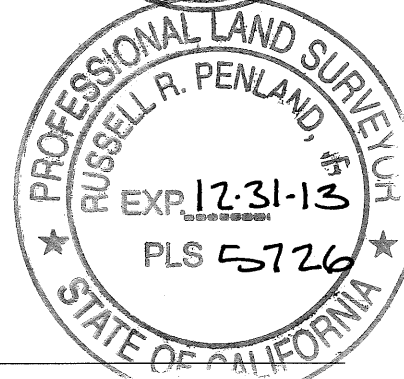
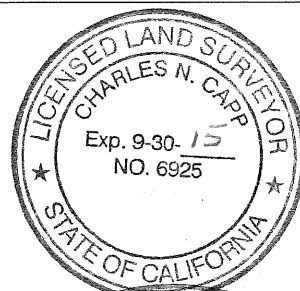
This Corner Record was received 10-14-13

and examined and filed 10-27-13

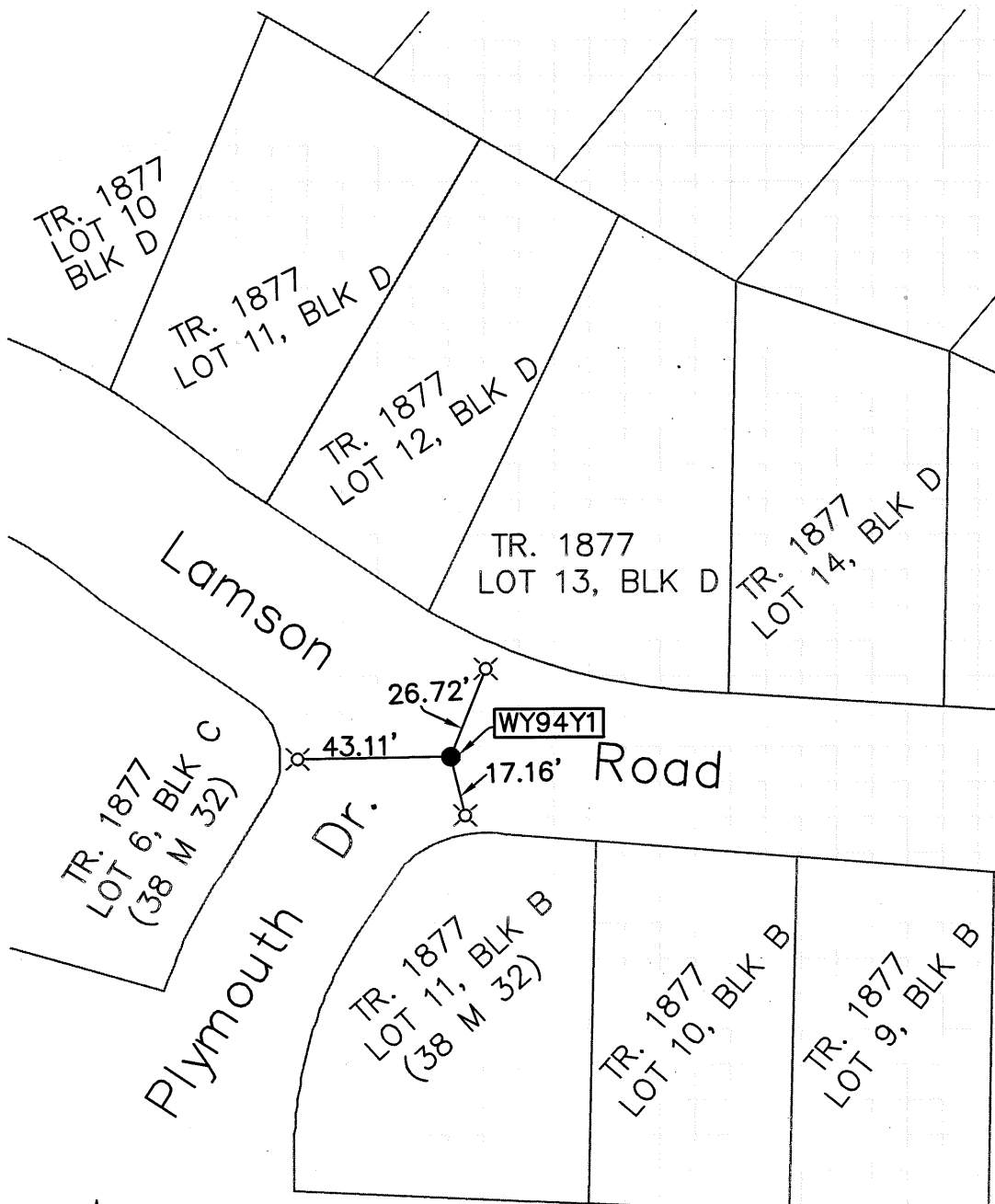
Signed Russell R. Penland P.L.S. or R.C.E. No. 5726

Title COUNTY SURVEYOR

County Surveyor's Comment \_\_\_\_\_



WY94YI



SCALE 1" = 50'

## LEGEND



FOUND STANDARD COUNTY WELL MONUMENT



SET LEAD AND TACK TAGGED LS 6925

AA##A#

COUNTY MONUMENT ID