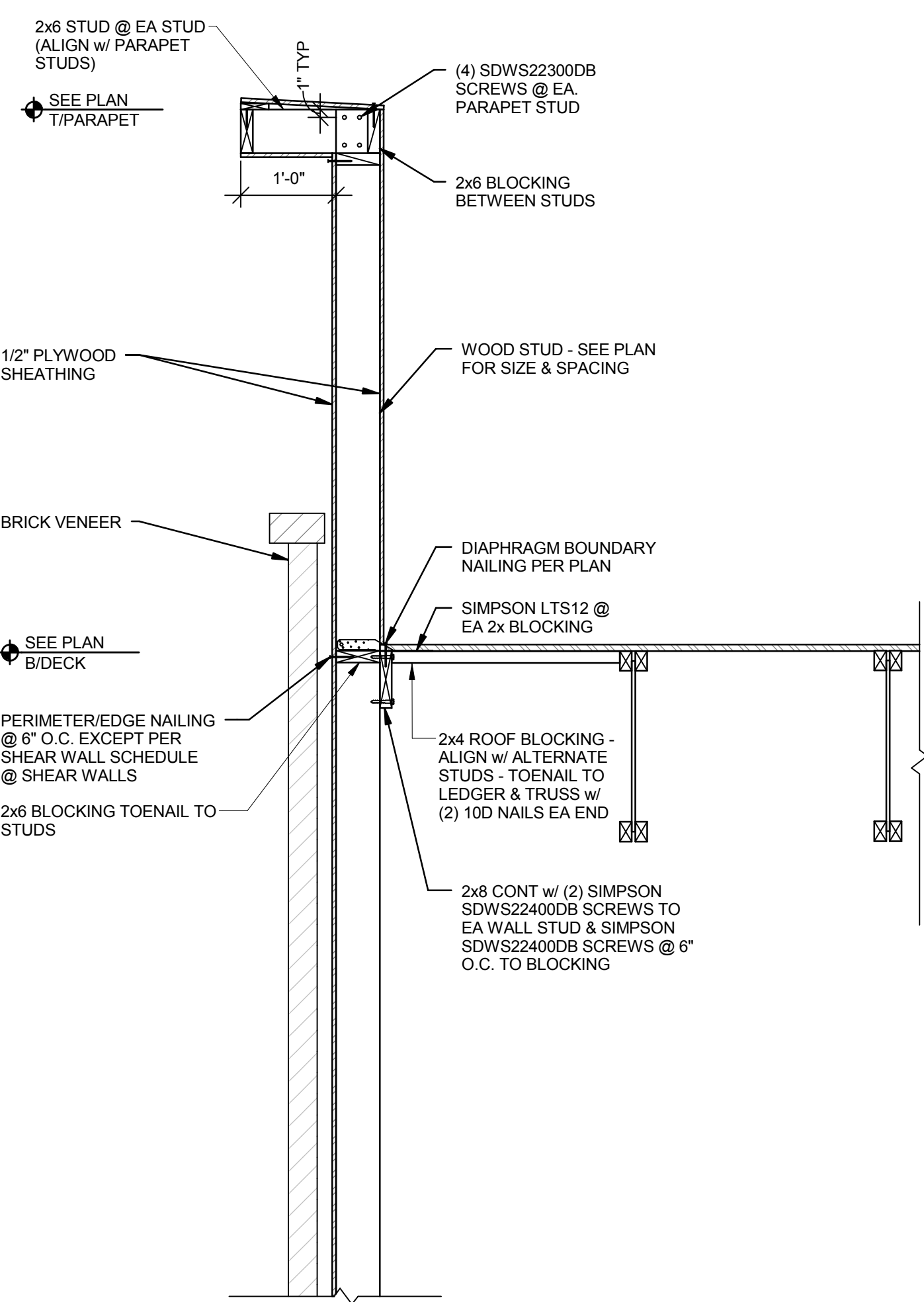
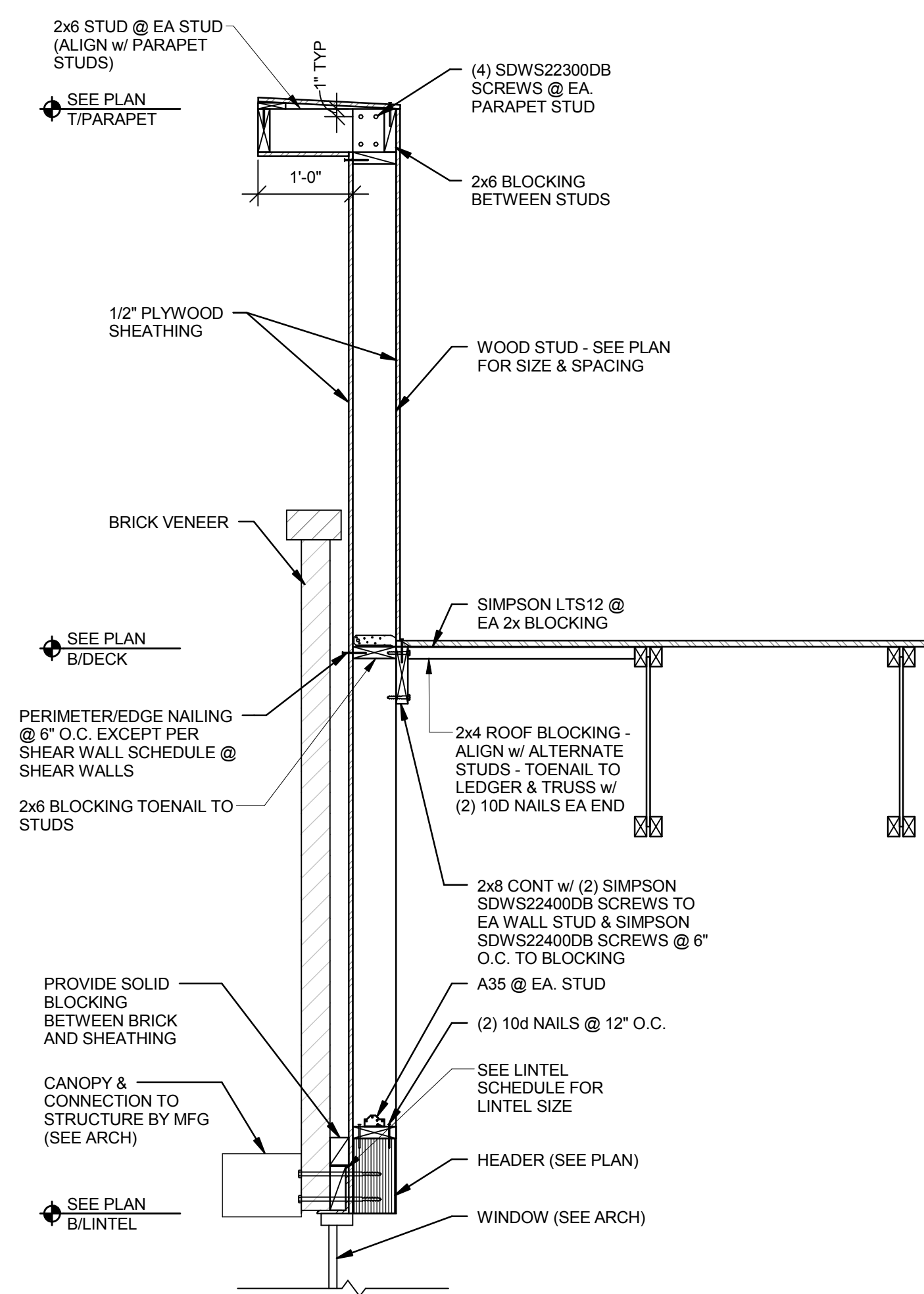


3/7/2018 11:29:18 AM

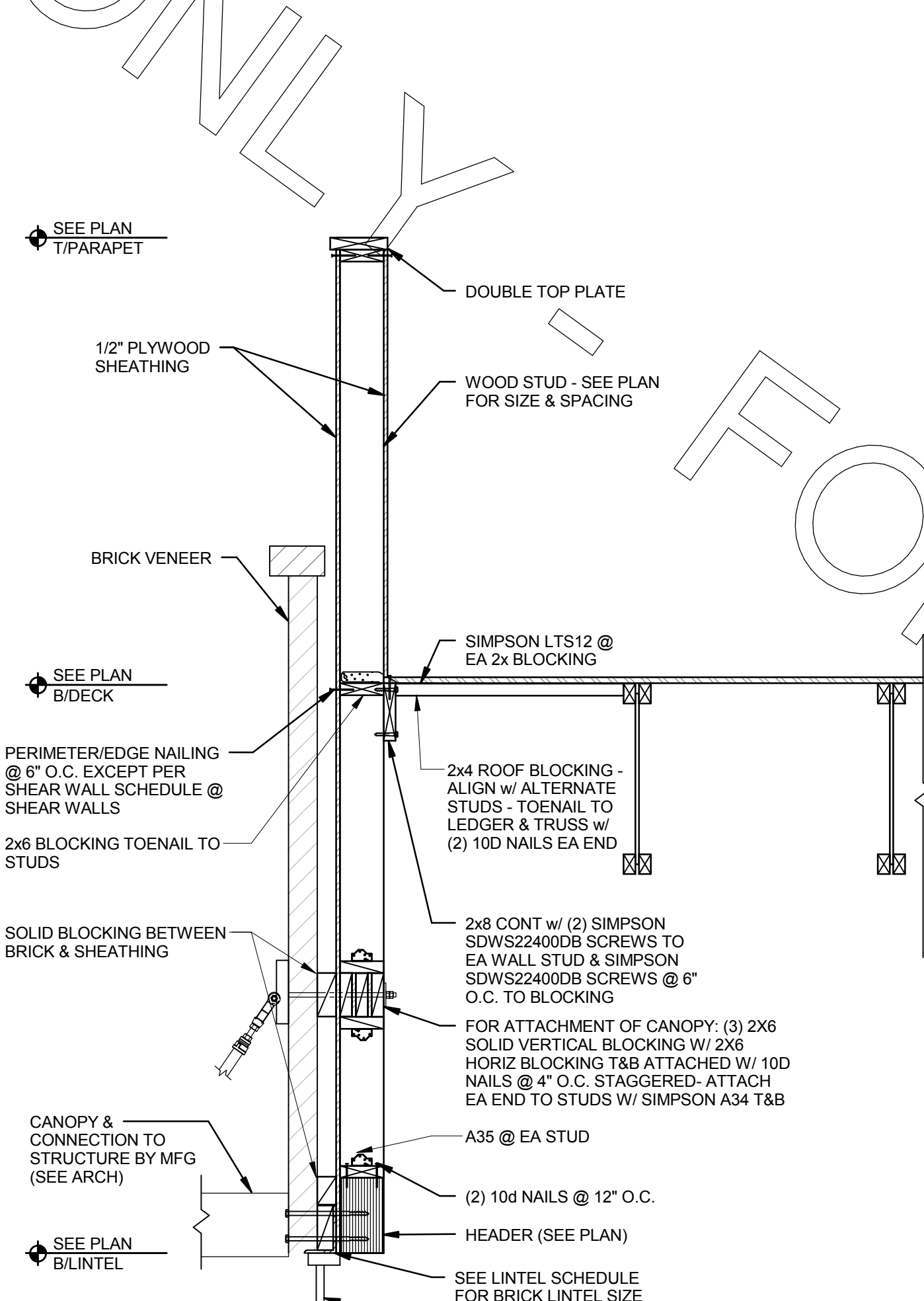
A4 NON-BEARING @ HIGH PARAPET
3/4" = 1'-0"



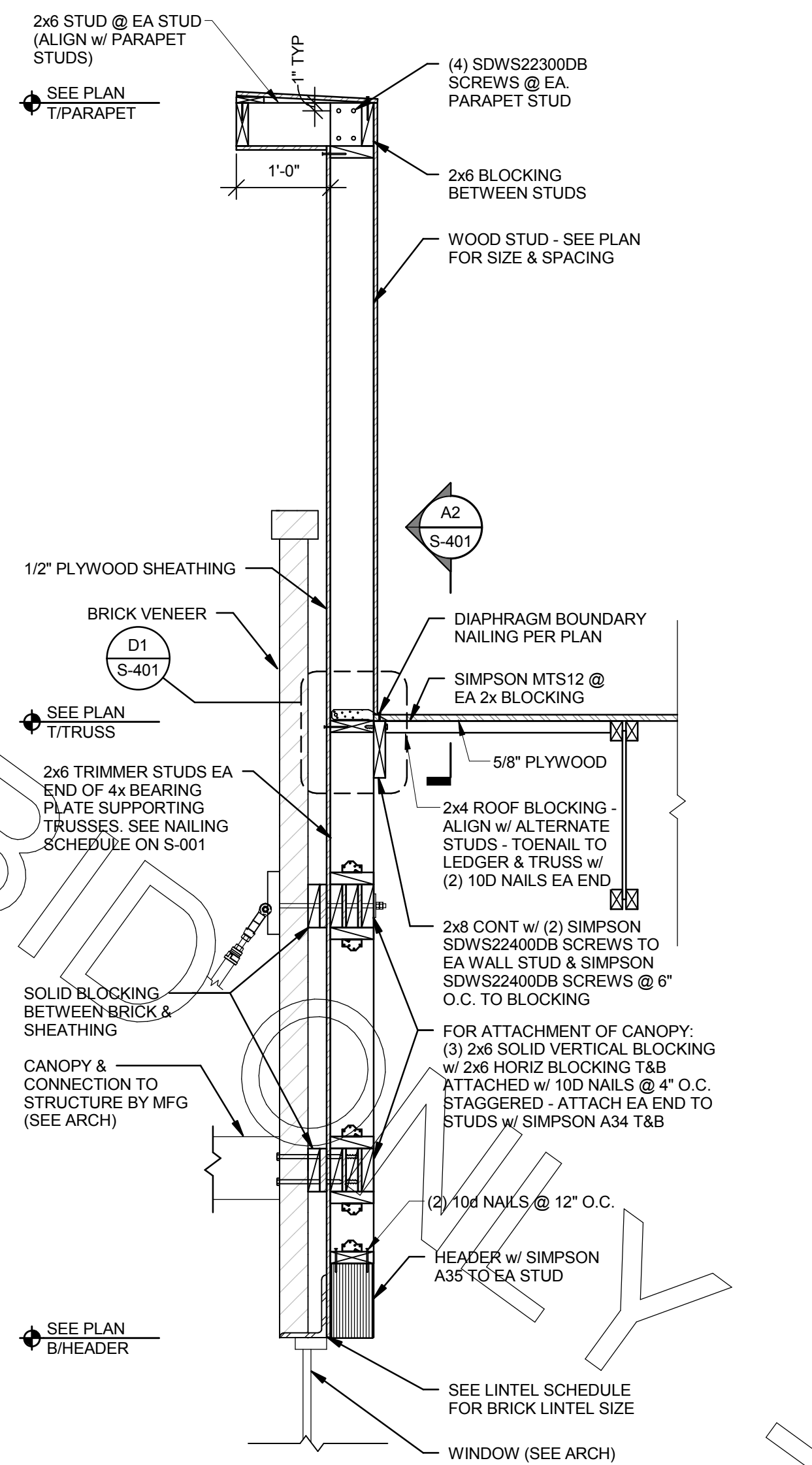
A3 NON-BEARING WALL SECTION @ HIGH PARAPET W/ WINDOW
3/4" = 1'-0"



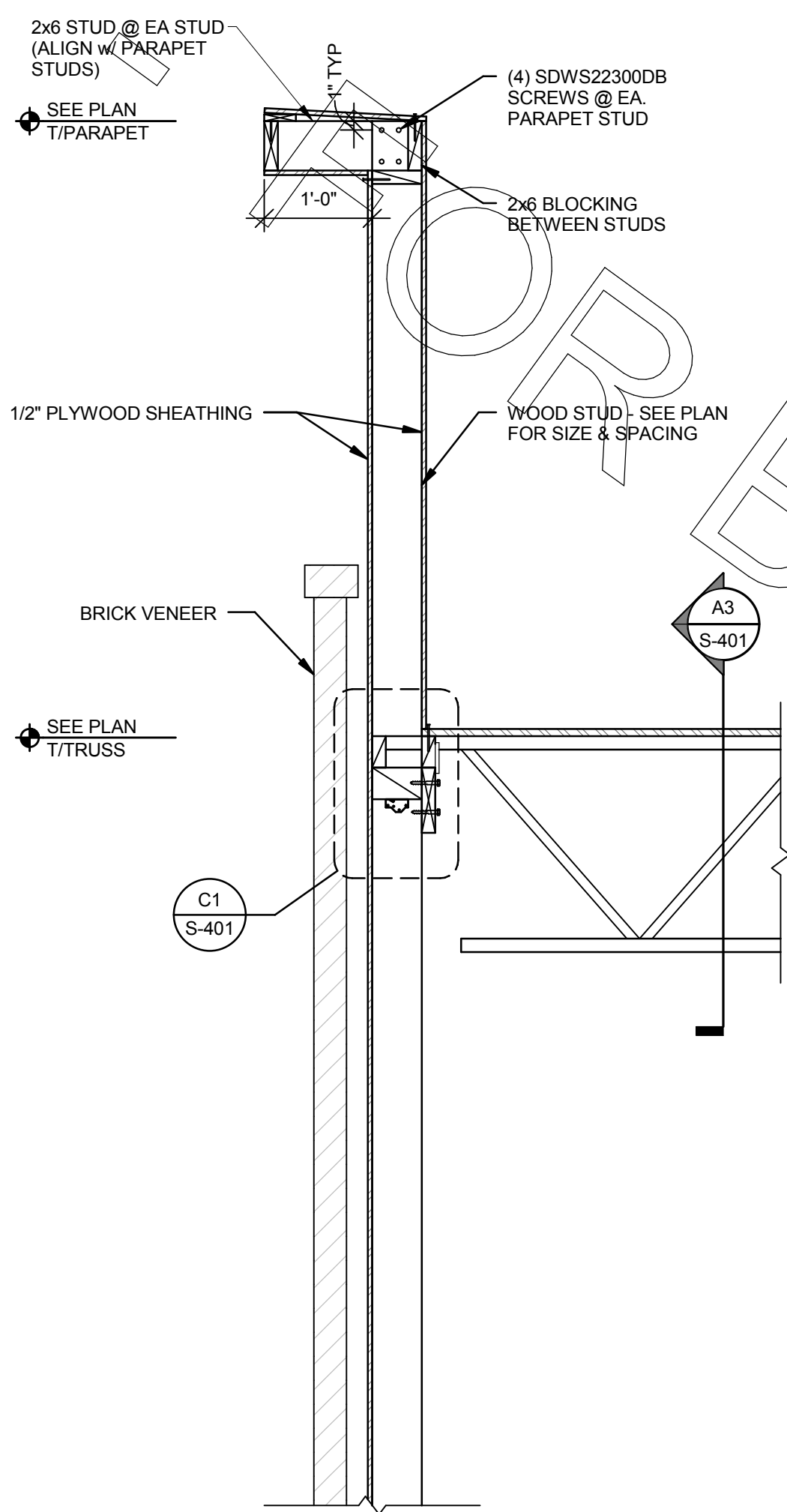
A2 NON-BEARING WALL SECTION @ WINDOWS AND CANOPY
3/4" = 1'-0"



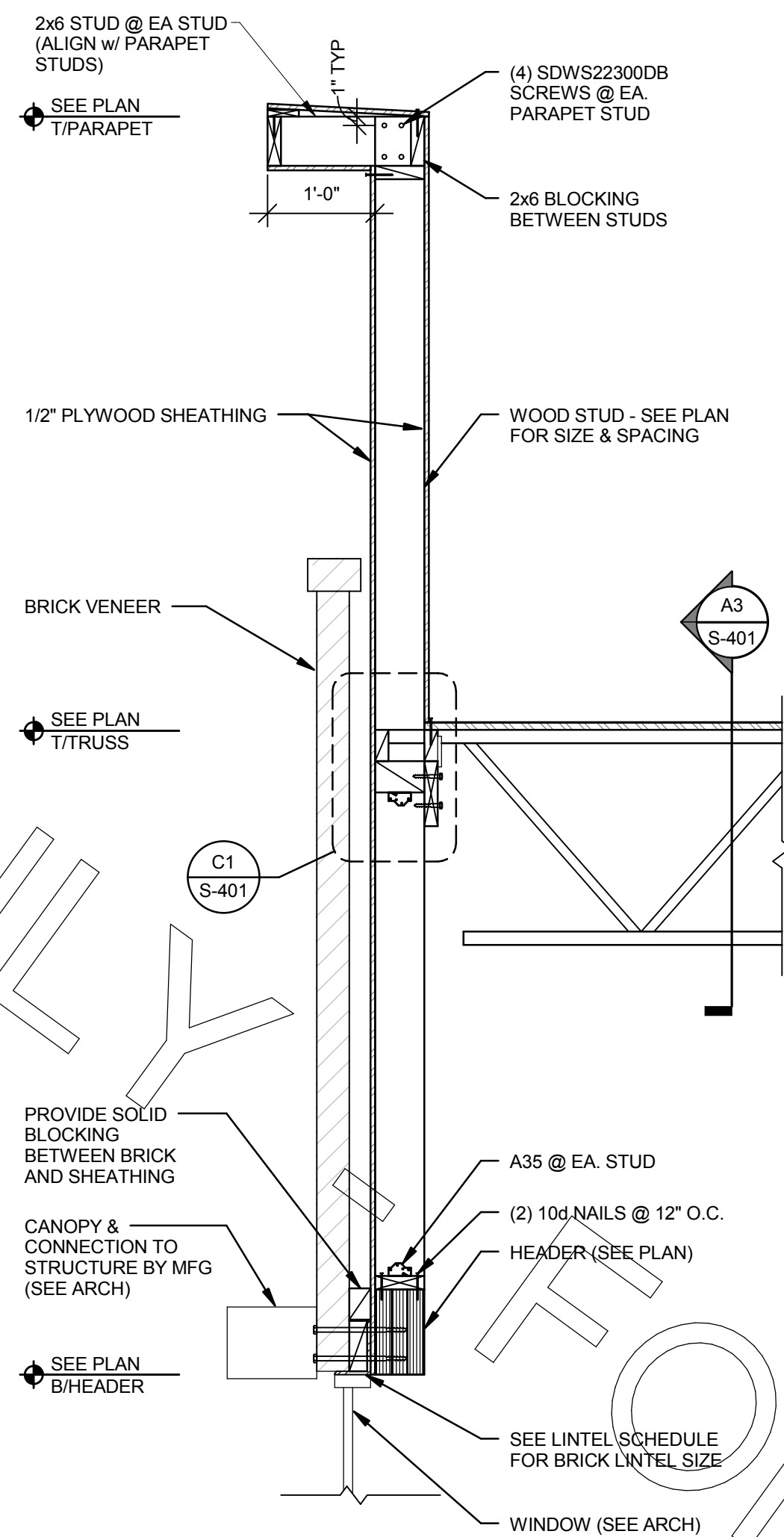
A1 DRIVE THRU WALL SECTION
3/4" = 1'-0"



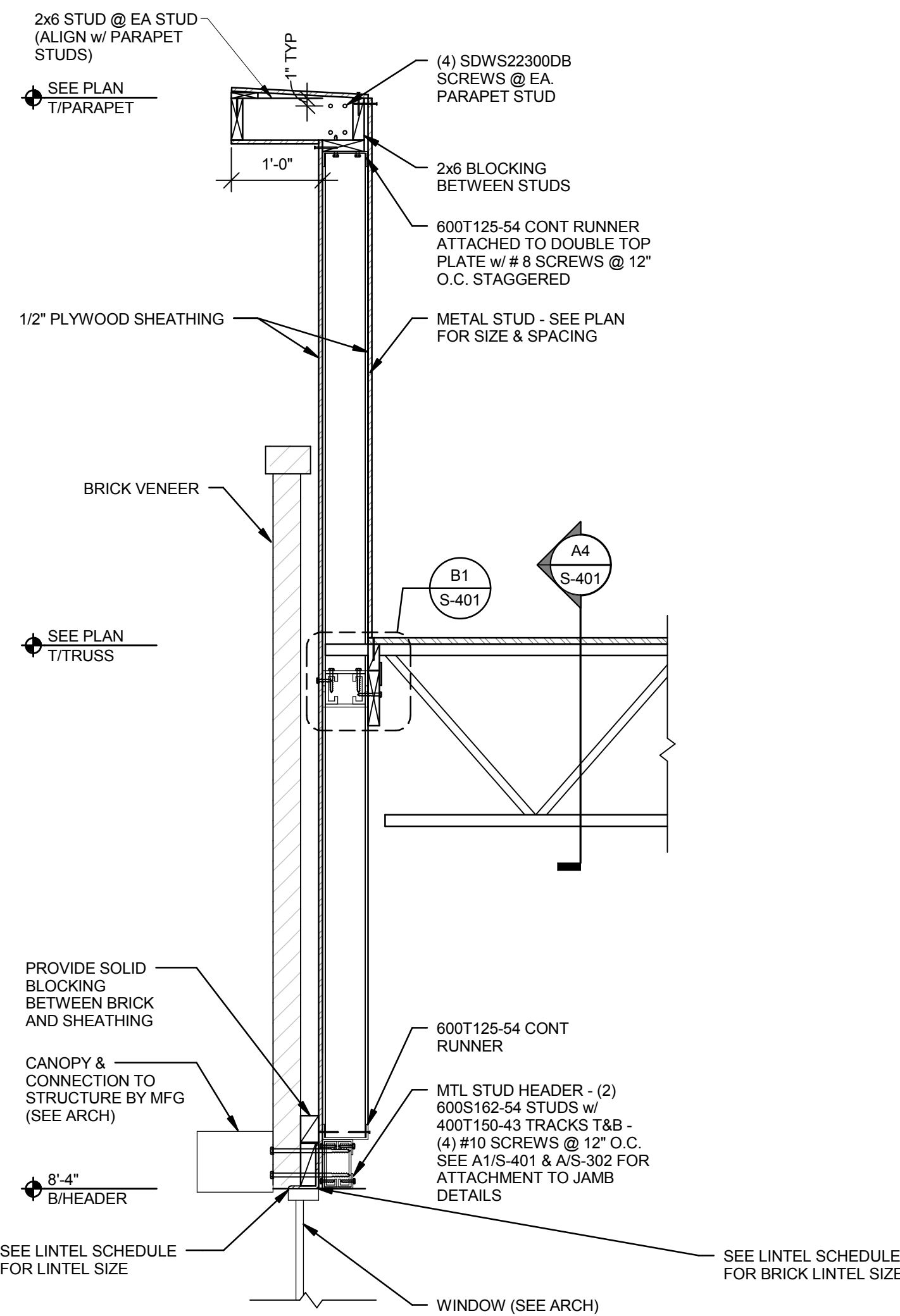
D4 BEARING WALL @ HIGH PARAPET
3/4" = 1'-0"



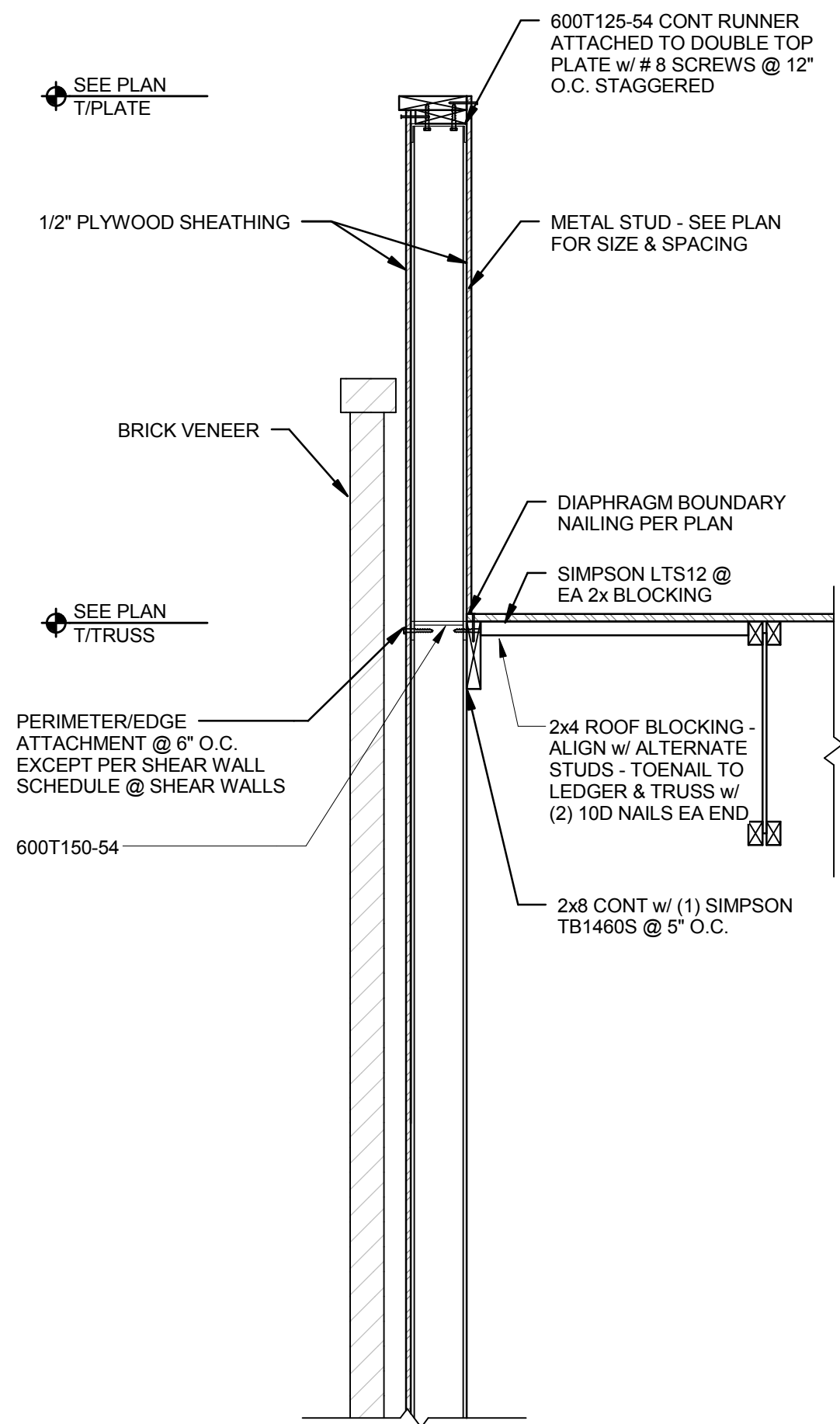
D3 BEARING WALL @ HIGH PARAPET W/ WINDOW
3/4" = 1'-0"



D2 DRIVE THRU MTL STUD
3/4" = 1'-0"



D1 NON-BEARING MTL STUD WALL
3/4" = 1'-0"



ENGINEER'S PROJECT #	171143
PRINTED FOR	BID
DATE	December 7, 2017
DESIGNED BY	WBU
DRAWN BY	JNJ

Information contained on this drawing and in all digital files produced for above named project may not be reproduced in any manner without express written or verbal consent from authorized project representatives.

SHEET SECTIONS & DETAILS

SHEET NUMBER

S-403

CHICK-FIL-A
Cherokee Place FSR
115 Cherokee Place, Cartersville, GA 30121

FSU# 00534

REVISION SCHEDULE
NO. DATE DESCRIPTION

NO. DATE DESCRIPTION

ENGINEER'S PROJECT #	171143
PRINTED FOR	BID
DATE	December 7, 2017
DESIGNED BY	WBU
DRAWN BY	JNJ

Information contained on this drawing and in all digital files produced for above named project may not be reproduced in any manner without express written or verbal consent from authorized project representatives.

SHEET SECTIONS & DETAILS

SHEET NUMBER

S-403



Chick-fil-A

Chick-fil-A
5200 Buffington Road
Atlanta, Georgia 30349-2998

INTERPLAN

ARCHITECTURE
ENGINEERING
INTERIOR DESIGN
PROJECT MANAGEMENT
604 COURTLAND STREET
SUITE 100
ORLANDO, FLORIDA 32804
PH 407.645.5008
FX 407.629.9124

BRITT, PETERS
ASSOCIATES
P.C.
consulting engineers
999 WATERSIDE DRIVE
SUITE 2002
NORFOLK, VA 23510
PH 757.965.5710
BP# 171143

SEAL: THIS DOCUMENT IS NOT FOR CONSTRUCTION!
UNLESS THE ARCHITECT'S
SIGNATURE AND SEAL APPEAR BELOW: