

REVISIONS:

HEALTH RESPONSE 1	2022-11-
-------------------	----------

ISSUE DATE:[illegible]

DRAWN BY: G. COLLINS

PANDA PROJECT #: D7861
ARCH PROJECT #: JCDDT21-0268

I certify that these documents were prepared or approved by me, and that I am a duly licensed architect/ engineer under the laws of the State of Maryland, license number Sean P. Pick-Kell 52379 expiration date 03-08-2024



TRUE WARM & WELCOME
10300 Mill Run Circle
Owings Mills, MD 21117

E-104

ROOF POWER PLAN

TRUE WARM & WELCOME 2300 R6 RR

- | | | |
|-------------------------|--------------|-------|
| ROOF PLAN GENERAL NOTES | | 2 |
| | NOT TO SCALE | E-104 |

1. ROUTE HOMERUN THROUGH BACK OF HOUSE LIGHTING CIRCUIT. REFER TO LIGHTING PLAN, 1/E-101. FAN TO BE CONTROLLED BY SWITCH FOR BACK OF HOUSE LIGHTING.
2. DUCT SMOKE DETECTOR, FURNISHED BY MECHANICAL/FACTORY, WIRED BY ELECTRICAL. FURNISH AND INSTALL ALL ADDITIONAL RACEWAYS, WIRING, AND ACCESSORIES AS REQUIRED FOR CODE COMPLIANCE AND UNIT SHUTDOWN.
3. PROVIDE CIRCUIT FEEDS FROM PANELBOARD - THROUGH HOOD CONTROL PANEL - UP TO ROOF. REFER TO DETAIL 3/E-401 AND KITCHEN HOOD SUBMITTAL DATA.
4. REFER TO CONDENSING UNIT WIRING DIAGRAM, 7/E-400.
5. STRUT RACK SUPPORT FOR EQUIPMENT DISCONNECT SWITCHES. REFER TO DETAIL 2/E-401.
6. PROVIDE W.P., GFCI DUPLEX RECEPTACLE WITH IN-USE COVER.
7. DO NOT INSTALL UNTIL BACK DRAFT DAMPER INSTALLATION IS COMPLETE. UTILIZE FACTORY KNOCKOUTS FOR ELECTRICAL RUN FOR THIS FAN. REFER TO SHEET M-402.
8. NOT USED.
9. STUB ELECTRICAL FEED FOR EF-1 & EF-2, THROUGH ROOF ON HINGE SIDE OF EXHAUST FANS, IN LOCATION AS SHOWN ON POWER ROOF PLAN. REFER TO DETAIL 3/M-501 FOR ADDITIONAL DETAILS.
10. ROUTE POWER FEEDS VIA FACTORY PROVIDED THRU-BASE CONNECTION AREA. COORDINATE WITH MECHANICAL.
11. UNIT TO BE PROVIDED BY LANDLORD WITH FACTORY DISCONNECT SWITCH. VERIFY IN FIELD AND IF DISCONNECT SWITCH IS NOT PROVIDED THE ELECTRICAL CONTRACTOR SHALL PROVIDE A DISCONNECT SWITCH.

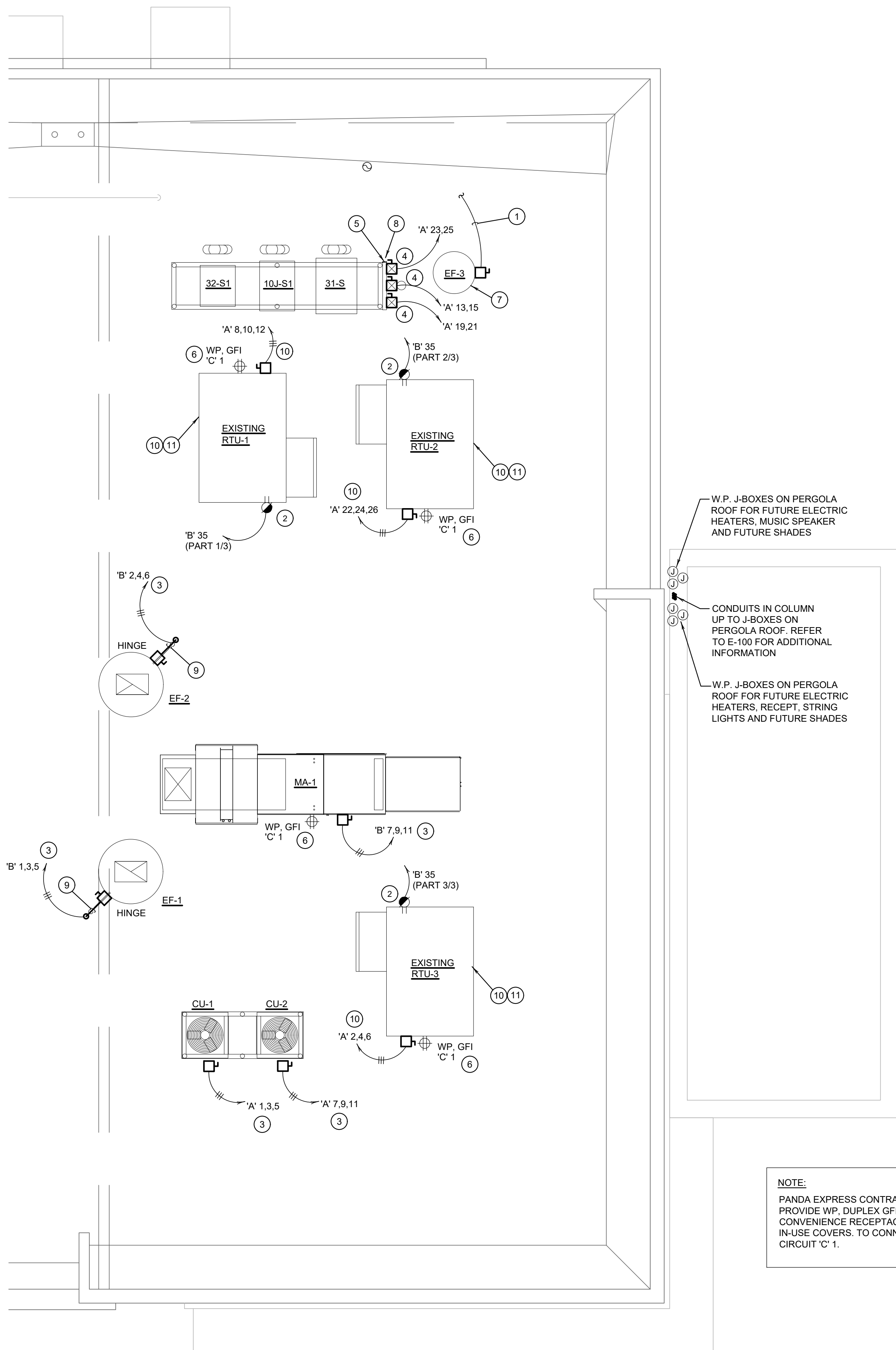
#	ROOF PLAN KEYED NOTES	3
---	-----------------------	---

NOT TO SCALE E-104

- ① DISCONNECT SWITCH PROVIDED WITH UNIT.
- ② COMBINATION 2P, 2F, WP DISCONNECT SWITCH. SIZE DISCONNECT AND RKS FUSES PER MANUFACTURER RECOMMENDATION.
- ③ COMBINE CIRCUITRY IN 1" CONDUIT FROM J-BOX ON EQUIPMENT DISCONNECT SWITCH SUPPORT. REFER TO DETAIL THIS SHEET, 1/E-104.
- ④ ELECTRICAL FEEDS ARE TO BE ROUTED FROM PLENUM SPACE, UP THROUGH EQUIPMENT CURB, INTO BOTTOM OF EQUIPMENT, THROUGH FACTORY INSTALLED WATER TIGHT CONNECTIONS.
- ⑤ FEEDERS FOR THE ROOFTOP UNITS ARE PROVIDED AND INSTALLED BY THE LANDLORD.

HVAC EQUIPMENT SCHEDULE	4
-------------------------	---

NOT TO SCALE E-104



NOTE:
PANDA EXPRESS CONTRACTOR TO PROVIDE WP, DUPLEX GFI CONVENIENCE RECEPTACLES WITH IN-USE COVERS. TO CONNECT TO CIRCUIT 'C' 1.



ROOF POWER PLAN	1
-----------------	---

1/4" = 1'-0"	E-104
--------------	-------