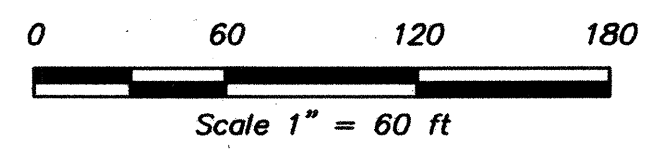
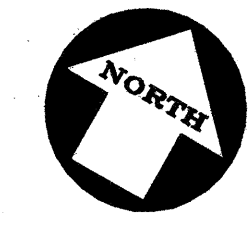
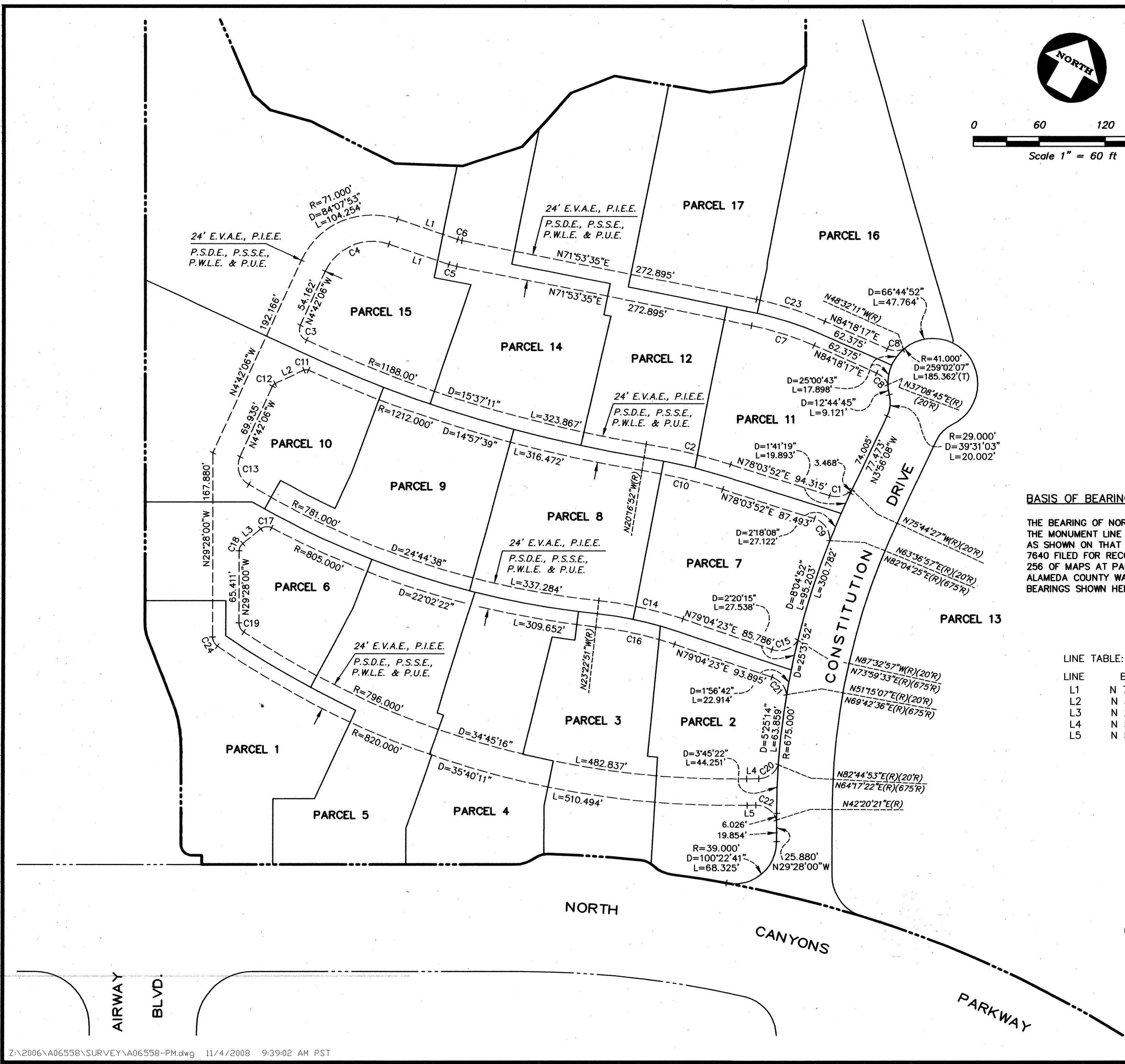


PARCEL MAP 9356 MAP BK 310 PG 86



LEGEND:

- BOUNDARY LINE
- - - - - ADJOINING BOUNDARY LINE
- ===== PARCEL LINE
- - - - - EASEMENT LINE
- ===== MONUMENT LINE
- ABUTTERS RIGHTS RELINQUISHED
- FOUND STANDARD STREET MONUMENT
- SET MONUMENT
- FOUND 3/4" IP LS 4238
- SET 3/4" IP LS 7089
- SET LEAD & TAG LS 7089
- SET NAIL & TAG LS 7089
- EMERGENCY VEHICLE ACCESS EASEMENT
- JOINT ACCESS EASEMENT
- LANDSCAPE EASEMENT
- MAPS
- MONUMENT TO MONUMENT
- OFFICIAL RECORD
- P.A.E.
- P.I.E.E.
- P.S.D.E.
- P.U.E.
- P.W.L.E.
- P.S.S.E.
- (R)
- R.P.A.E.
- S.D.E.
- S.F.
- S.E.
- U.E.
- (1)

BASIS OF BEARINGS:

THE BEARING OF NORTH 60° 32' 00" EAST TAKEN ON THE MONUMENT LINE OF NORTH CANYONS PARKWAY AS SHOWN ON THAT CERTAIN PARCEL MAP NUMBER 7640 FILED FOR RECORD ON JUNE 13, 2001, IN BOOK 256 OF MAPS AT PAGE 81, OFFICIAL RECORDS OF ALAMEDA COUNTY WAS TAKEN AS THE BASIS FOR ALL BEARINGS SHOWN HEREON.

LINE TABLE:

LINE	BEARING	DISTANCE
L1	N 79°25'47" E	57.300'
L2	N 36°03'52" E	29.048'
L3	N 21°03'53" E	21.019'
L4	N 59°22'29" E	11.324'
L5	N 59°22'29" E	8.094'

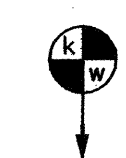
CURVE TABLE:

CURVE	RADIUS	DELTA	LENGTH
C1	20.000'	63°48'19"	22.272'
C2	542.000'	8°20'44"	78.946'
C3	10.000'	89°57'35"	15.701'
C4	47.000'	84°07'53"	69.013'
C5	54.000'	7°32'12"	7.103'
C6	30.000'	7°32'12"	3.946'
C7	276.000'	12°24'42"	59.788'
C8	20.000'	42°50'28"	14.954'
C9	20.000'	75°33'05"	26.372'
C10	518.000'	8°20'44"	75.451'
C11	5.000'	48°36'55"	4.242'
C12	5.000'	40°45'58"	3.558'
C13	20.000'	83°56'07"	29.299'
C14	362.000'	12°27'14"	78.685'
C15	20.000'	76°37'20"	26.746'
C16	338.000'	12°27'14"	73.468'
C17	9.000'	67°35'38"	10.618'
C18	9.000'	50°31'53"	7.937'
C19	10.000'	56°24'14"	9.844'
C20	20.000'	66°37'36"	23.257'
C21	20.000'	62°10'44"	21.705'
C22	20.000'	72°57'52"	25.469'
C23	300.000'	12°24'42"	64.987'
C24	10.000'	55°29'20"	9.685'

PARCEL MAP 9356

BEING ALL OF THAT CERTAIN PARCEL OF LAND DESCRIBED AS "NEW PARCEL D" OF LOT LINE ADJUSTMENT 04-002, CERTIFICATE OF COMPLIANCE RECORDED OCTOBER 12, 2004 AS INSTRUMENT NO. 2004-458504, AND ALL OF PARCEL E OF PARCEL MAP 7640, FILED JUNE 13, 2001 IN BOOK 256 OF MAPS AT PAGE 81, ALAMEDA COUNTY RECORDS.

CITY OF LIVERMORE - ALAMEDA COUNTY - CALIFORNIA
SCALE: 1"=60' SEPTEMBER 2008



KIER & WRIGHT
CIVIL ENGINEERS & SURVEYORS, INC.
1233 Quarry Lane, Suite 145 Phone (925) 249-6555
Pleasanton, California 94566 Fax (925) 249-6563

JOB NO. A06558

SHEET 8 OF 8 SHEETS