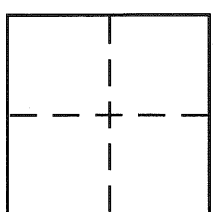


CORNER RECORD

Document Number CR 2072

City of Dublin County of Alameda, California

Brief Legal Description Monument as set on Tassajara Road, 514.10' southerly of Dublin Blvd. (Per Parcel Map 7250, 243 MAPS 78)



CORNER TYPE

Government Corner ☐ Control ☐
 Meander ☐ Property ☒
 Rancho ☐ Other ☐
 Date of Survey Sept. 11, 2003

COORDINATES (Optional)

N. _____
 E. _____
 Zone _____ NAD27 ☐ NAD83 ☐
 NAD83 Epoch _____
 Elev. _____
 Vert. Datum: NGVD29 ☐ NAVD88 ☐
 Meas. Units: Metric ☐ Imperial ☐

Corner - Left as found ☐ Found and tagged ☐ Established ☐ Reestablished ☒ Rebuilt ☐

Identification and type of corner found: Evidence used to identify or procedure used to establish or reestablish the corner:
Found disk in well monument stamped "LS 5199 CH2M Hill" as shown on
Sheet 5, Parcel Map 7250 (243 Maps 78). The replacement monument as
described below was set from four found reference hub and tacks, 3.28
feet from monument position. Found disk tied from reference control (see
drawing on next page).

A description of the physical condition of the monument as found and as set or reset: Monument found in good
condition and destroyed in 2003 during Tassajara Road construction.
Replaced with a well monument with 2" brass disk stamped LS 7739. Monument
in median planter. See drawing next page.

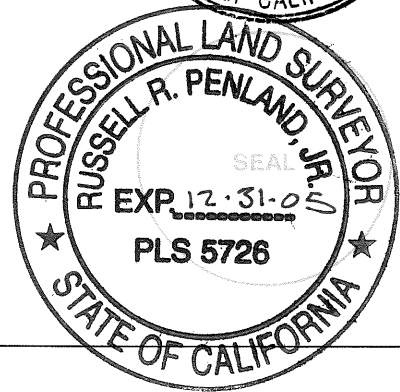
SURVEYOR'S STATEMENT

This Corner Record was prepared by me or under my direction in conformance with
 the Land Surveyor's Act on February 4 2003
 Signed Helmut R. Korstick P.L.S or R.C.E. No. 7739

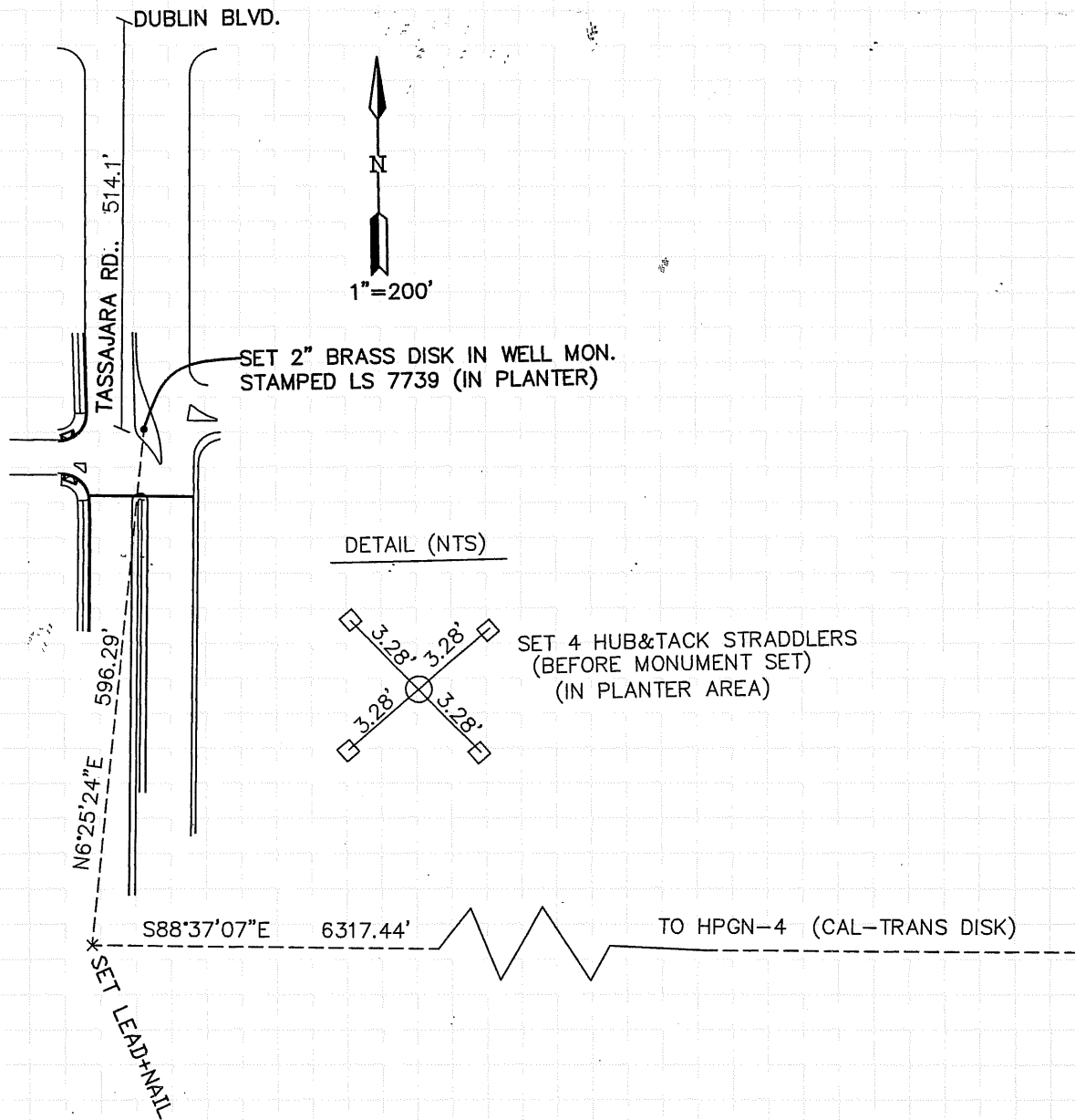


COUNTY SURVEYOR'S STATEMENT

This Corner Record was received 12-11-03
 and examined and filed 2-13-04
 Signed [Signature] P.L.S or R.C.E. No. 5726
 Title COUNTY SURVEYOR
 County Surveyor's Comment _____



X



MONUMENT TIED AND RE-SET FROM CHAUDHARY & ASSOCIATES CONTROL POINTS
USED DURING TASSAJARA ROAD IMPROVEMENT PROJECT