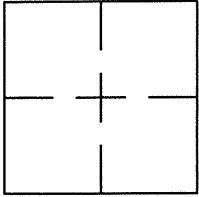


CORNER RECORDDocument Number CR 8464City of BERKELEYCounty of ALAMEDA, CaliforniaBrief Legal Description WELL MONUMENT LOCATED WITHIN THE INTERSECTION OF 9TH STREET AND POTTER STREET (COB B0435)**CORNER RECORD**

Government Corner ☐ Control ☒
 Meander ☐ Property ☐
 Rancho ☐ Other ☐
 Date of Survey 5/23/2016

COORDINATES
(Optional)

N. _____
 E. _____
 Zone _____ Datum _____
 Elev. _____

Corner — Left as found ☒ Found and tagged ☐ Established ☐ Reestablished ☐ Rebuilt ☐

Identification and type of corner found: Evidence used to identify or procedure used to establish or reestablish the corner:
FOUND 2"Ø BRASS DISC WITH PUNCH IN STANDARD MONUMENT WELL LOCATED WITHIN THE INTERSECTION OF 9TH STREET AND POTTER STREET.

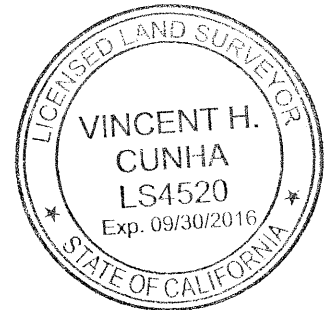
THIS POINT WAS REFERENCED PRIOR TO A CONSTRUCTION PROJECT IN THE VICINITY.

A description of the physical condition of the monument as found and as set or reset: _____
FOUND AND SET POINTS AS SHOWN ON PAGE 2.

SURVEYOR'S STATEMENT

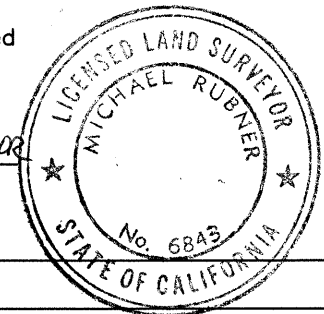
This Corner Record was prepared by me or under my direction in conformance with
 the Land Surveyors' Act on MAY 24, 2016.

Signed VINCENT H. CUNHA L.S. Number LS 4520

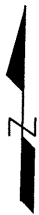
**COUNTY SURVEYOR'S STATEMENT**

This Corner Record was received 10 JUNE 2016 and examined
 and filed 11 JULY 2016.

Signed Michael Rubner Title COUNTY SURVEYOR

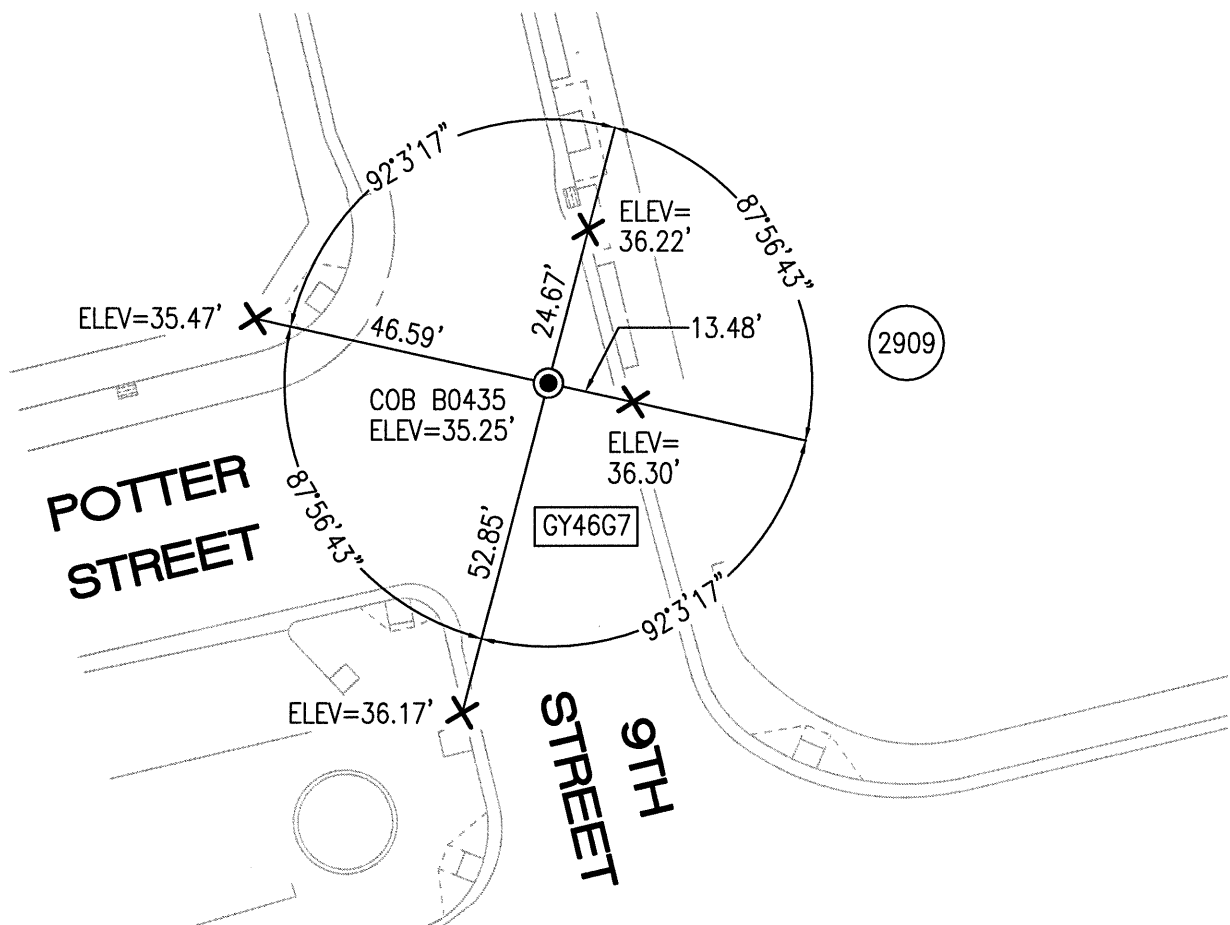


County Surveyor's Comment _____



LEGEND

- FOUND 2"Ø BRASS DISC WITH PUNCH IN STANDARD MONUMENT WELL (COB B0435)
- ✕ SET CUT CROSS IN CONCRETE
- COB CITY OF BERKELEY
- AA##A# ALAMEDA COUNTY MONUMENT ID



NOTE

ELEVATIONS SHOWN HEREON BASED UPON CITY OF
BERKELEY VERTICAL DATUM.
COB B0435 TAKEN AS ELEV=35.25'

